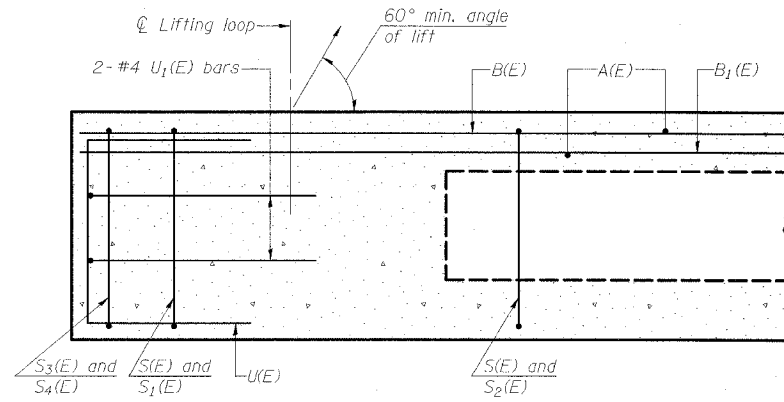


STATE OF ILLINOIS  
DEPARTMENT OF TRANSPORTATION

ROUTE NO.	SECTION	COUNTY	SHEET	SHEET NO.
FAP 869	105BR-2	SALINE	118	55
FED. ROAD DIST. NO. 1				ILLINOIS
FED. AID PROJECT NO.				

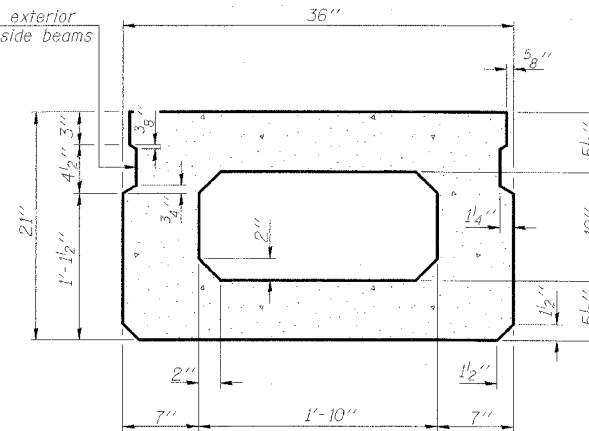
78031

SHEET NO. 6  
23 SHEETS

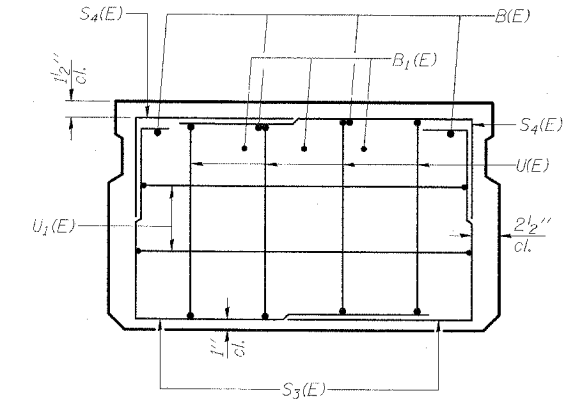


SECTION C-C

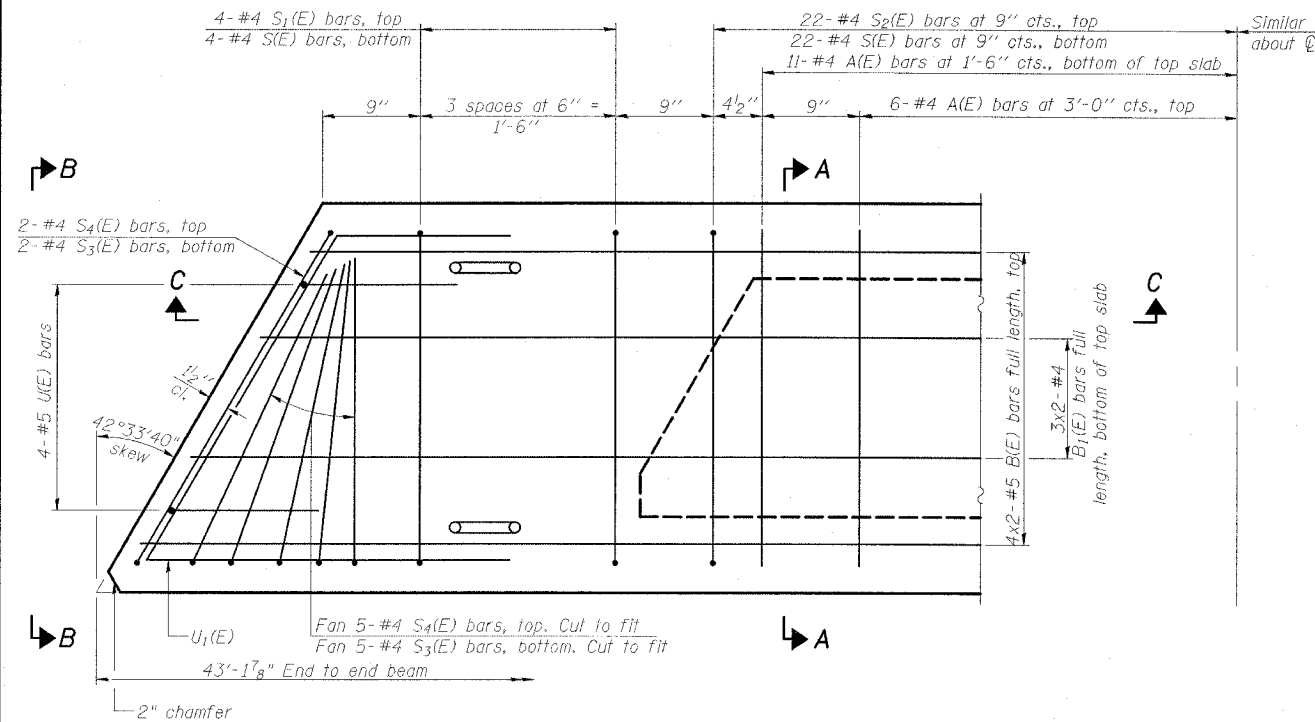
Omit key on exterior face of outside beams



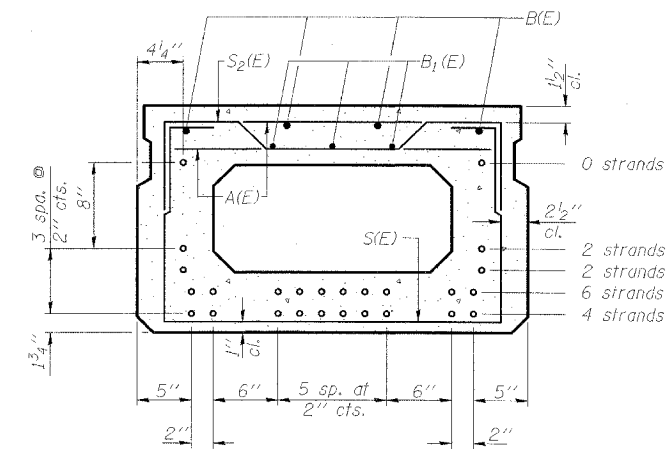
SECTION A-A  
(Showing dimensions)



VIEW B-B



PLAN VIEW



SECTION A-A  
(Showing reinforcement and permissible strand locations)

14 - 1/2"  $\phi$  Strands, each stressed to 30,900 lbs.

Note: Place the number of strands specified in each row symmetrically about the centerline of beam in the permissible strand locations shown.

21"x36"  
BAR LIST  
ONE BEAM ONLY  
(For information only)

Bar	No.	Size	Length	Shape
A(E)	34	#4	2'-7"	—
B(E)	8	#5	22'-7"	—
B1(E)	6	#4	22'-4"	—
S(E)	52	#4	6'-5"	U
S1(E)	8	#4	5'-7"	U
S2(E)	44	#4	5'-10"	U
S3(E)	14	#4	5'-5"	U
S4(E)	14	#4	5'-0"	U
U(E)	8	#5	4'-0"	U
U1(E)	4	#4	8'-2"	U

Note: See sheet 7 of 23 for additional details and Bill of Material.

MIN. BAR LAP  
#5 bar = 2'-2"

Notes: 1. Spacing of S(E) and S2(E) bars may be adjusted up to 4" in the immediate area of the transverse tie diaphragms to miss the block outs for the transverse ties.

2. Adjust reinforcement locations to clear dowel holes at fixed ends.

**ESCA**  
CONSULTANTS, INC.

DESIGNED BY:	JMS	02/08
DRAWN BY:	HAS	02/08
CHECKED BY:	ELH	04/08
APPROVED BY:	RDP	04/08

SUPERSTRUCTURE DETAILS - SPAN 1 & 3

IL 34 OVER

MIDDLE FORK SALINE RIVER

FAP ROUTE 869 - SECTION 105BR-2

SALINE COUNTY

STATION 1561+70.00

STRUCTURE NO. 083-0038