

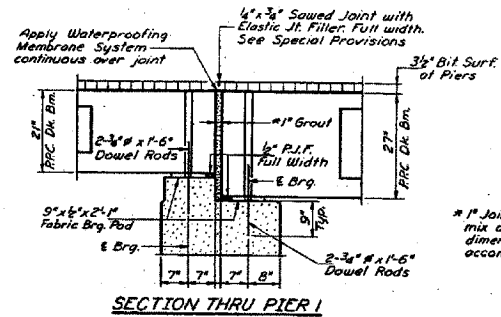
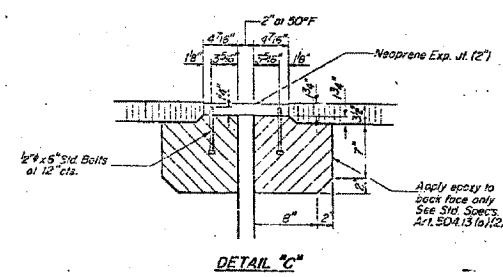
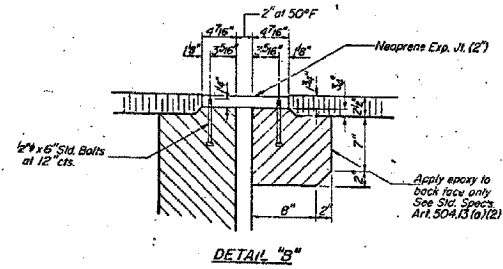
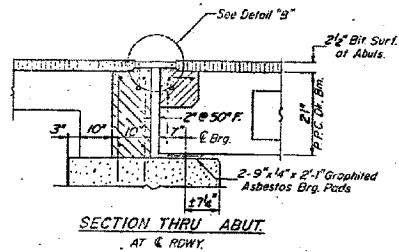


CONTRACT NO. 78031				
FAP RTE	SECTION	COUNTY	TOTAL SHEETS	SHEET NO.
869	105BR-2	SALINE	118	74
STA.		TO STA.		
FED. ROAD DIST. NO.	ILLINOIS	FED. AID PROJECT		

STATE OF ILLINOIS
DEPARTMENT OF TRANSPORTATION

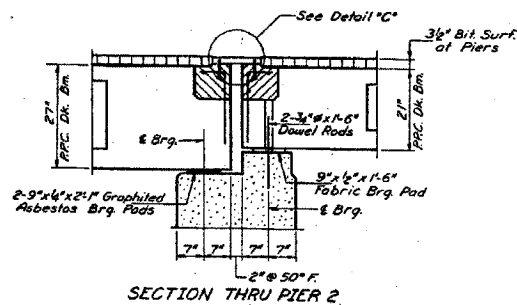
#105(B-DR, B-DP-1, B-DR-2, B-DR-3, B-DR-4)

NO.	DATE	BY	REVISION
143	H	SALINE	68 24
SHEET NO. 2		10 SHEETS	



* 1" Joint shall be packed with a very dry mix of 2:1 sand and PC mortar. This dimension may vary plus or minus to accommodate tolerance in beam lengths.

NOTE: Dimensions are at right angles.
Patched areas to be poured after beams have been erected and joints grouted.
Ends of beams shall be aligned at the expansion joints. Any linear variation in the beam lengths shall be placed at the fixed joint.
See End of Beam Detail for reinforcement.



DESIGNED	<i>William H. Hark</i>	EXAMINED	<i>[Signature]</i>
CHECKED	<i>[Signature]</i>	DRAWN	<i>[Signature]</i>
DRAWN	<i>[Signature]</i>	APPROVED	<i>[Signature]</i>
CHECKED	<i>[Signature]</i>		

SUPERSTRUCTURE DETAILS
S.B.L. RT. 143 - SEC. 105BR-1
SALINE COUNTY
STA. 1561 + 70

ESCA CONSULTANTS, INC.		
DESIGNED BY:	DAJ	02/08
DRAWN BY:	JPC	02/08
CHECKED BY:	MTD	02/08
APPROVED BY:	RDP	04/08

FOR INFORMATION ONLY

EXISTING STRUCTURE PLANS
FAP RTE 869 (IL 34)
SECTION 105BR-2
SALINE COUNTY