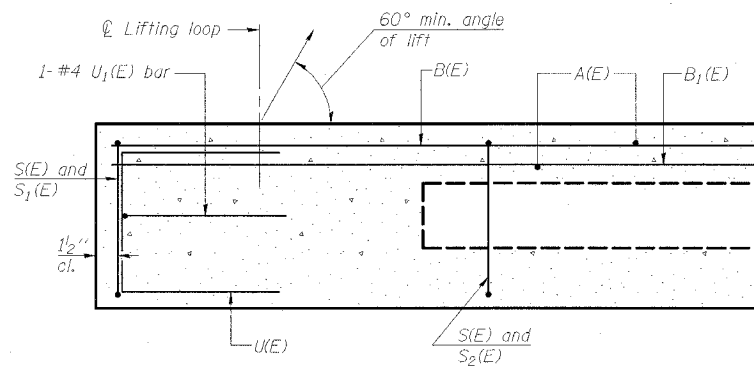


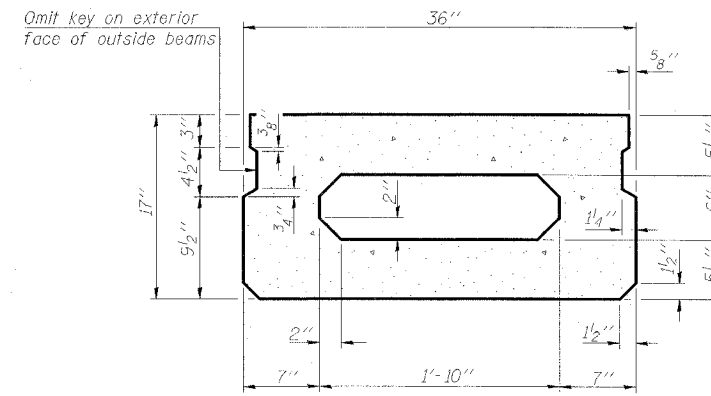
STATE OF ILLINOIS  
DEPARTMENT OF TRANSPORTATION

ROUTE NO.	SECTION	COUNTY	DISTRICT	SHEET NO.	SHEET NO. 6 17 SHEETS
FAP 869	105BR-3	SALINE	118	88	
FED. ROAD DIST. NO. 7	ILLINOIS	FED. AID PROJECT - AID			

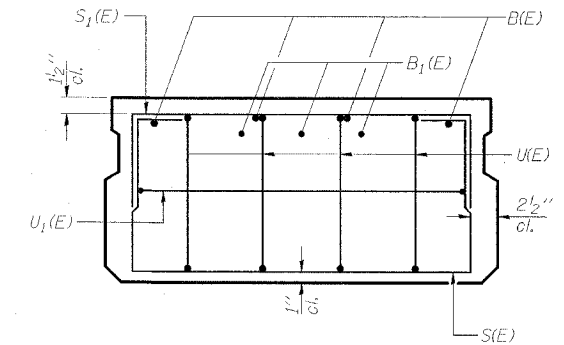
78031



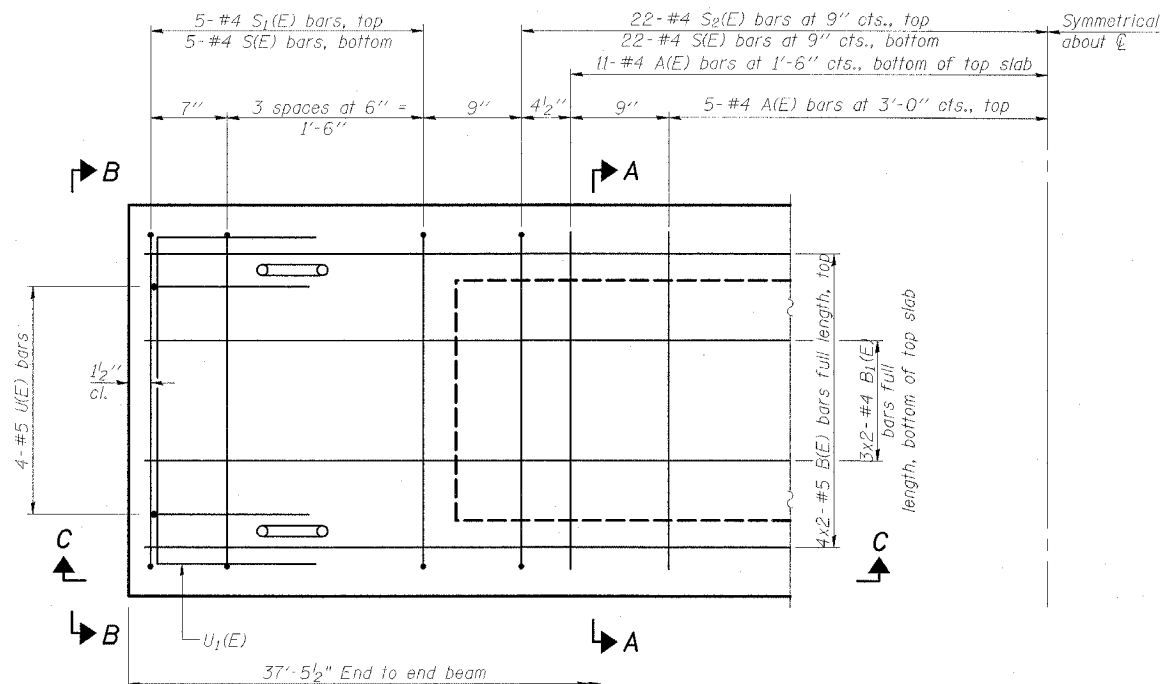
SECTION C-C



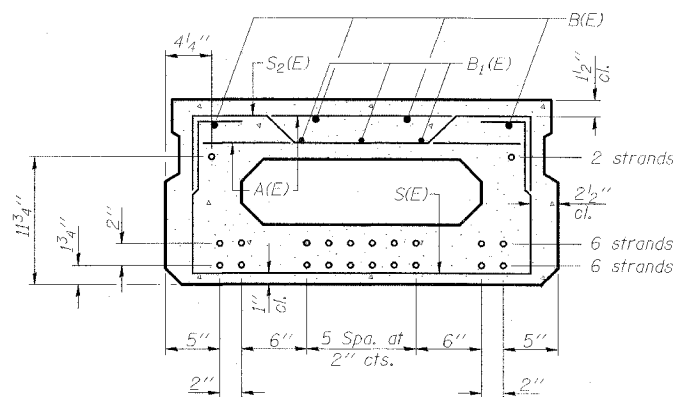
SECTION A-A  
(Showing dimensions)



VIEW B-B



PLAN VIEW



SECTION A-A

(Showing reinforcement and permissible strand locations)

14 - 1/2"  $\phi$  Strands, each strand stressed to 30,900 lbs

Note: Place the number of strands specified in each row symmetrically about the centerline of beam in the permissible strand locations shown.

**BAR LIST**  
**ONE BEAM ONLY**  
(For information only)

Bar	No.	Size	Length	Shape
A(E)	32	#4	2'-7"	—
B(E)	8	#5	19'-9"	—
B1(E)	6	#4	19'-6"	—
S(E)	54	#4	5'-9"	—
S1(E)	10	#4	4'-11"	—
S2(E)	44	#4	5'-2"	—
U1(E)	8	#5	3'-8"	—
U1(E)	2	#4	5'-0"	—

Note: See Sheet No. 7 of 17 for additional details and Bill of Material.

**MIN. BAR LAP**

#4 bar = 1'-8"  
#5 bar = 2'-2"

Notes: 1. Spacing of S(E) and S2(E) bars may be adjusted up to 4" in the immediate area of the transverse tie diaphragms to miss the block outs for the transverse ties.

2. Adjust reinforcement locations to clear dowel holes at fixed ends.

**ESCA**  
CONSULTANTS, INC.

DESIGNED BY:	ELH	02/08
DRAWN BY:	HAS	02/08
CHECKED BY:	ELH	02/08
APPROVED BY:	RDP	02/08

**SUPERSTRUCTURE DETAILS**  
**IL 34 OVER BANKSTON FORK AND**  
**SALINE RIVER OVERFLOW**  
**FAP ROUTE 869 - SECTION 105BR-3**  
**SALINE COUNTY**  
**STATION 1574+00.00**  
**STRUCTURE NO. 083-0039**