

STATE OF ILLINOIS  
DEPARTMENT OF TRANSPORTATION  
DIVISION OF HIGHWAYS

**PROPOSED  
HIGHWAY PLANS**

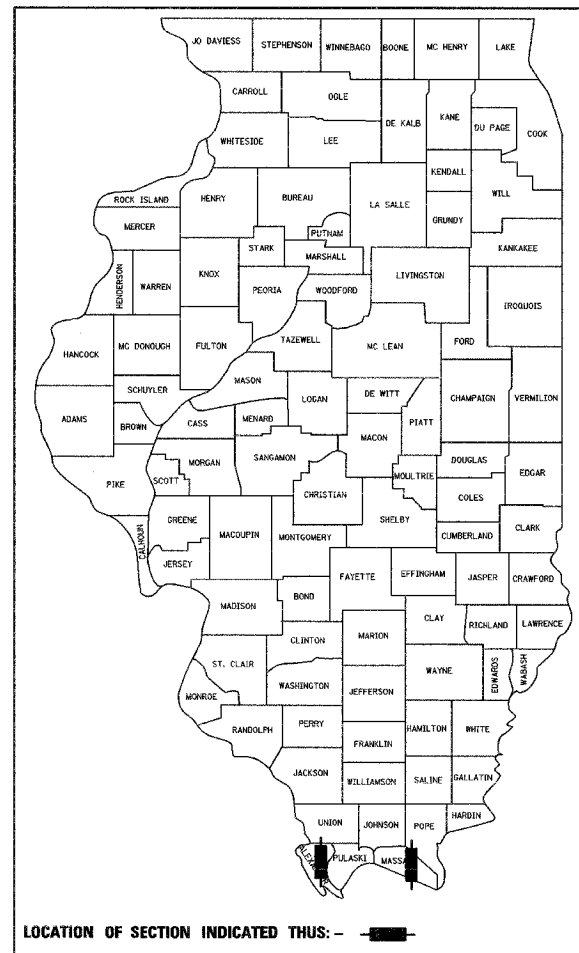
FAS ROUTE 1907 (IL ROUTE 127), FAP ROUTE 132 (IL ROUTE 145)  
SECTION 21BR-1, 102BR-1  
PROJECT: BHF-000S(598)  
ALEXANDER AND MASSAC COUNTIES

C-99-012-08

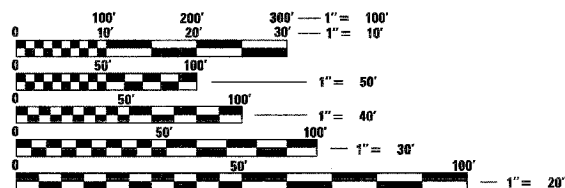
PPC DECK BEAM SUPERSTRUCTURE REPLACEMENTS  
OVER HOGSKIN CREEK AND MASSAC CREEK

| F.A.S. RTE.                    | SECTION | COUNTY    | TOTAL SHEETS       | SHEET NO. |
|--------------------------------|---------|-----------|--------------------|-----------|
| 1907                           | 21BR-1  | ALEXANDER | 82                 | 1         |
| F.A.P. RTE.                    | SECTION | COUNTY    |                    |           |
| 132                            | 102BR-1 | MASSAC    |                    |           |
| FED. ROAD DIST. NO. 7 ILLINOIS |         |           | CONTRACT NO. 78032 |           |

D-99-012-08



FOR INDEX OF SHEETS, SEE SHEET NO. 2  
FOR SUMMARY OF QUANTITIES, SEE SHEET NO. 3



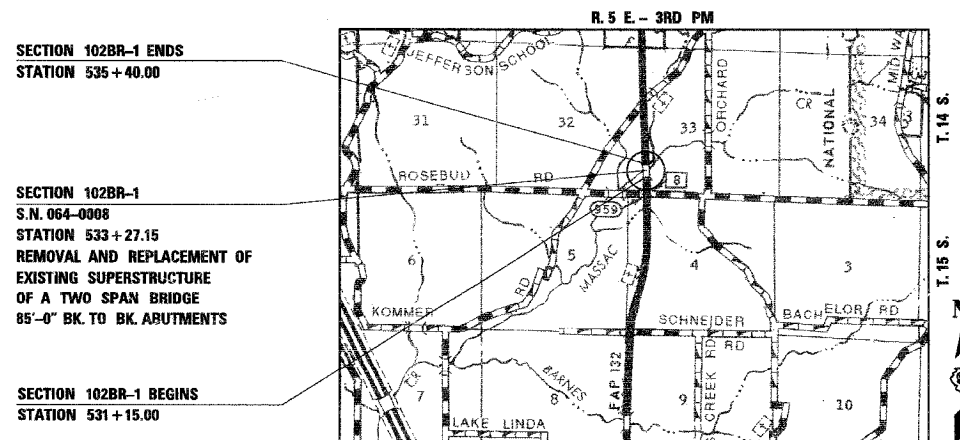
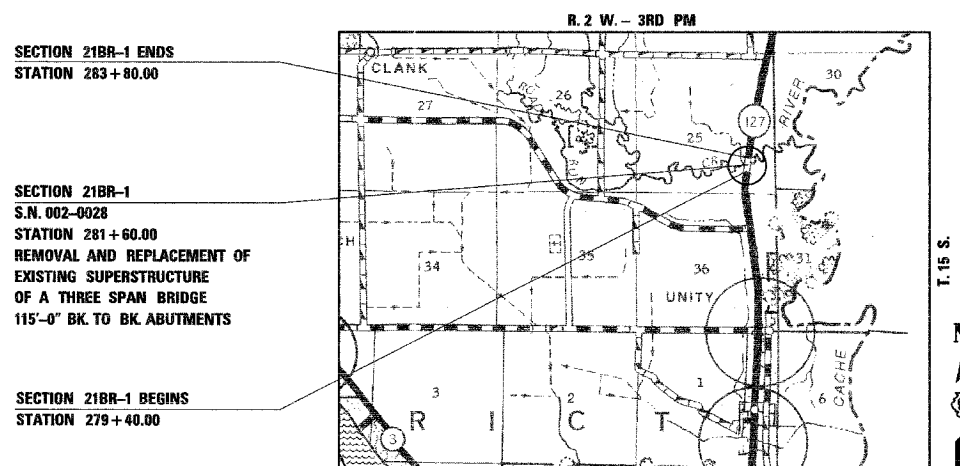
FULL SIZE PLANS HAVE BEEN PREPARED USING STANDARD ENGINEERING SCALES. REDUCED SIZED PLANS WILL NOT CONFORM TO STANDARD SCALES. IN MAKING MEASUREMENTS ON REDUCED PLANS, THE ABOVE SCALES MAY BE USED.

J.U.L.I.E.  
JOINT UTILITY LOCATION INFORMATION FOR EXCAVATION  
1-800-892-0123  
OR 811

DISTRICT 9 NO. (618) 549-2171  
PROJECT ENGINEER: DAVID PICHE

TOWNSHIPS: UNITY AND BENTON

CONTRACT NO. 78032



LOCATION MAPS

TOTAL LENGTH OF SECTION & PROJECT = 865.00 FEET = 0.164 MILES  
NET LENGTH OF SECTION & PROJECT = 865.00 FEET = 0.164 MILES

DESIGN DESIGNATION  
N.A.

FAS ROUTE 1907, FAP ROUTE 132  
FUNCTIONAL CLASSIFICATION: MAJOR COLLECTOR (NON-URBAN),  
MINOR ARTERIAL (NON-URBAN)  
DESIGN SPEED: 55 MPH, 55 MPH  
POSTED SPEED: 55 MPH, 55 MPH  
ADT: 770 (2007), 2,030 (2007)  
PV: 87%, 87%  
TRUCKS: 13%, 13%



David W. Petermeier 3/13/08  
DAVID W. PETERMEIER  
EDWARDSVILLE, ILLINOIS  
ENGINEER NO. 062-052553  
EXPIRES NOV. 30, 2009



STATE OF ILLINOIS  
DEPARTMENT OF TRANSPORTATION  
DIVISION OF HIGHWAYS

SUBMITTED April 8 20 08  
M. Chanis  
DEPUTY DIRECTOR OF HIGHWAYS, REGION ENGINEER

June 27 2008  
Eric E. Harau  
ENGINEER OF DESIGN AND ENVIRONMENT

June 27 2008  
Christine M. Reed  
DIRECTOR OF HIGHWAYS, CHIEF ENGINEER

PRINTED BY THE AUTHORITY  
OF THE STATE OF ILLINOIS  
MARCH 2008