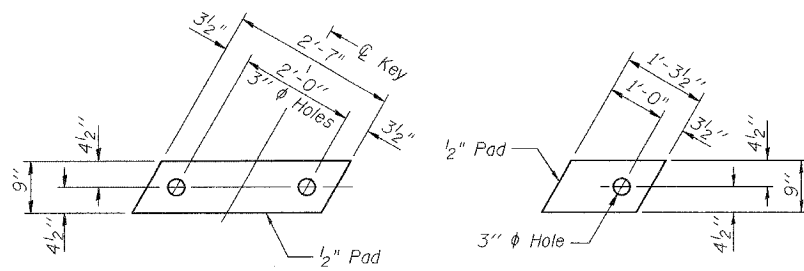


STATE OF ILLINOIS
DEPARTMENT OF TRANSPORTATION

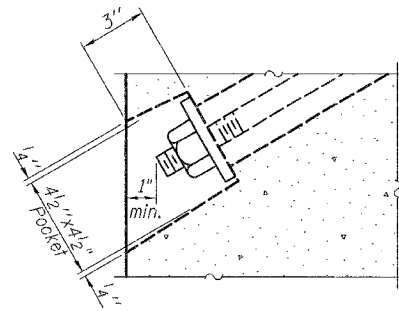
ROUTE NO.	SECTION	COUNTY	TOTAL SHEETS	SHEET NO.	SHEET NO. 6
F.A.S. 1907	21BR-1	ALEXANDER	82	18	16 SHEETS
FED. ROAD DIST. NO. 7	ILLINOIS	FED. AID PROJECT-			

Contract #78032

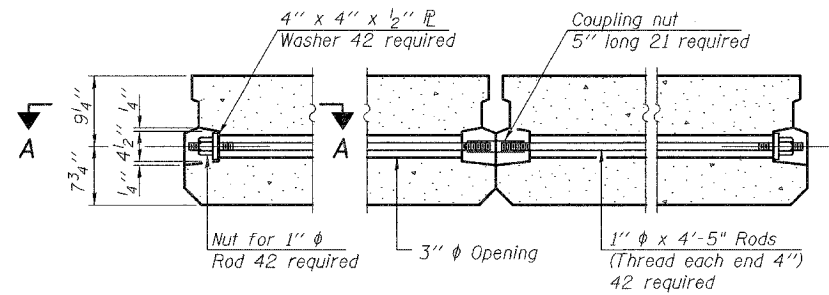


FABRIC BEARING PAD
(Interior)
(24 Required)

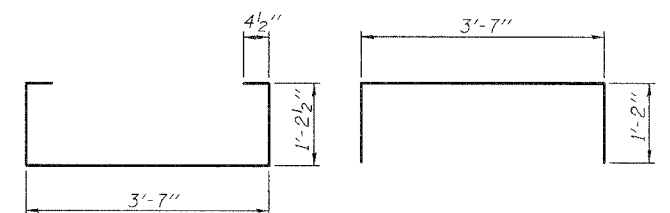
FABRIC BEARING PAD
(Exterior and Stage Constr. Line)
(16 Required)



SECTION A-A

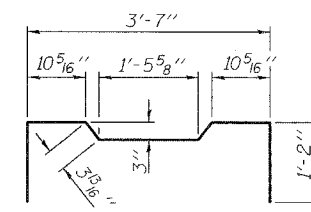


TYPICAL TRANSVERSE TIE ASSEMBLY



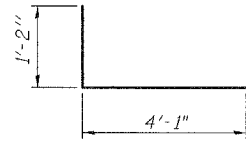
BAR S(E)

BAR S1(E)

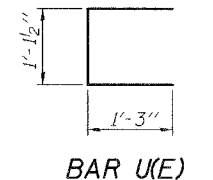


BAR S2(E)

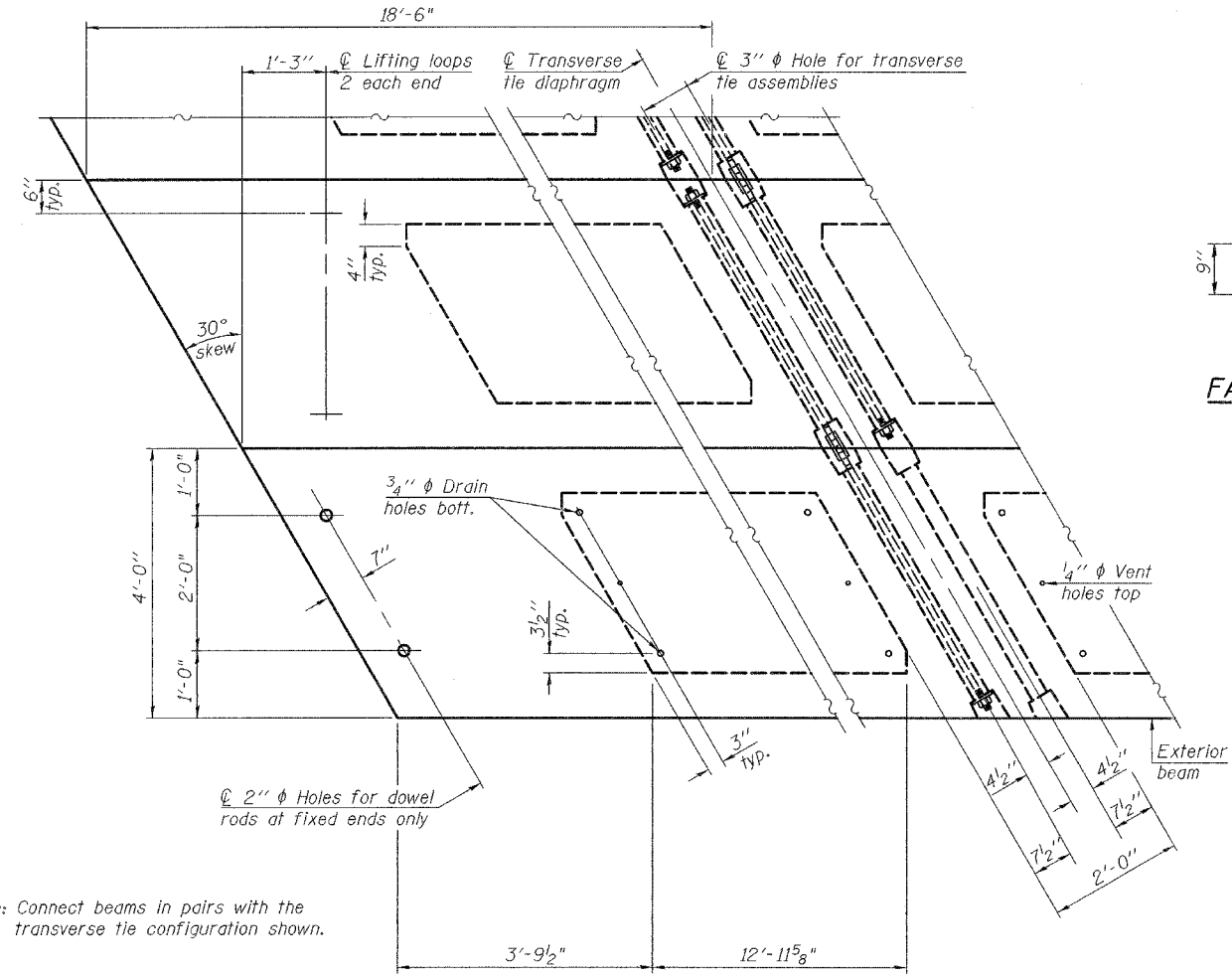
BAR S3(E)



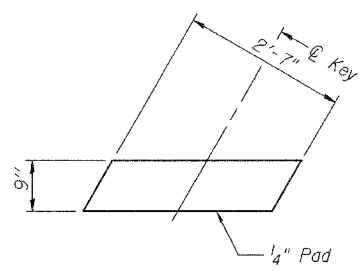
BAR S4(E)



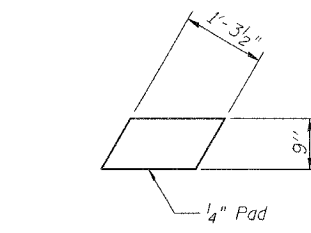
BAR U(E)



PLAN VIEW

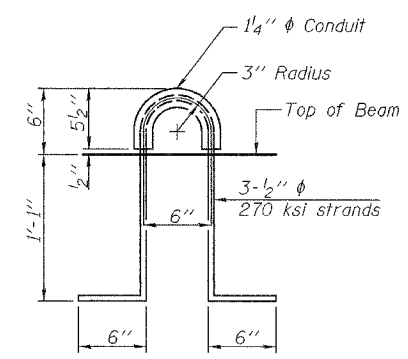


FABRIC BEARING PAD
(Interior)
(24 Required)

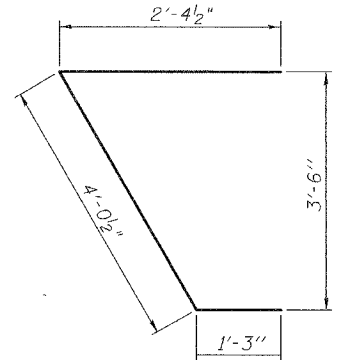


FABRIC BEARING PAD
(Exterior and Stage Constr. Line)
(16 Required)

EXPANSION



LIFTING LOOP DETAIL



BAR U1(E)

BILL OF MATERIAL

Precast Prestressed Conc. Deck Bms. (17" Depth)	Sq. Ft.	3,551
---	---------	-------

NOTES

See Sheets 11 and 12 of 16 for fascia beam modifications for rail post anchorage.
 Prestressing steel shall be uncoated high strength, low relaxation 7-wire strand, Grade 270.
 The nominal diameter shall be 1/2" and the nominal cross-sectional area shall be 0.153 sq. in.
 The 1" rods in the transverse tie assembly shall be tightened to a snug fit and the threads set. Pockets on exterior faces of bridge shall be filled with grout after transverse tie assembly is in place.
 Reinforcement bars shall conform to ASTM A 706 (IL MOD), Grade 60. (See Special Provisions)
 Two 1/8" fabric adjusting shims of the dimensions of the exterior bearing pad shall be provided for each bearing pad location.
 A minimum 2 1/2" lifting pin shall be used to engage the lifting loops during handling.
 Corrosion Inhibitor, per Article 1020.05(b)(12) and 1021.06 of the Standard Specifications, shall be used in the concrete for precast prestressed concrete deck beams.
 Compressive strength of prestressed concrete, f'c, shall be 6000 psi.
 Compressive strength of prestressed concrete at release, f'cl, shall be 5000 psi.

17" X 48" DECK BEAM DETAILS
ILL. ROUTE 127 OVER HOGSKIN CREEK
F.A.S. ROUTE 1907 - SECTION 21BR-1
ALEXANDER COUNTY
STATION 281+60.00
STRUCTURE NO. 002-0028



DESIGNED	YSS
CHECKED	RLM
DRAWN	PRC
CHECKED	YSS

03/04/08