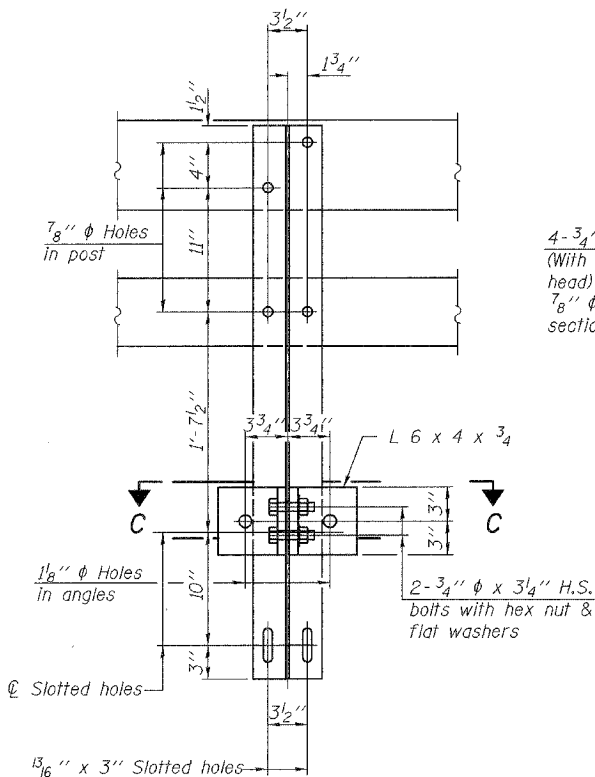
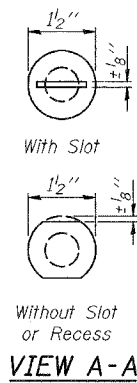
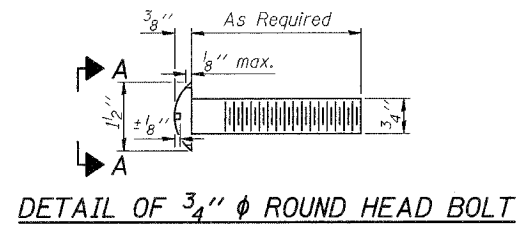


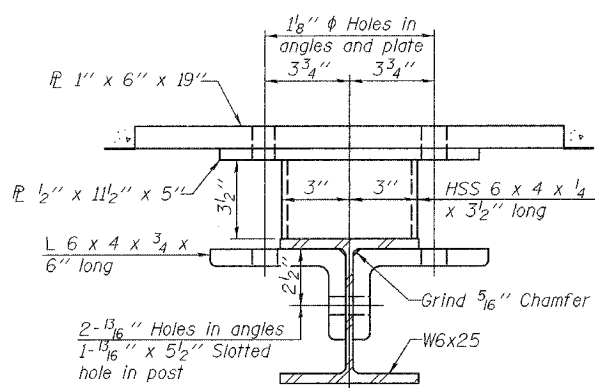
STATE OF ILLINOIS
DEPARTMENT OF TRANSPORTATION

ROUTE NO. F.A.S. 1907	SECTION 21BR-1	COUNTY ALEXANDER	TOTAL SHEETS 82	SHEET NO. 24	SHEET NO. 12 16 SHEETS
FED. ROAD DIST. NO. 7		ILLINOIS	FED. AID PROJECT-		

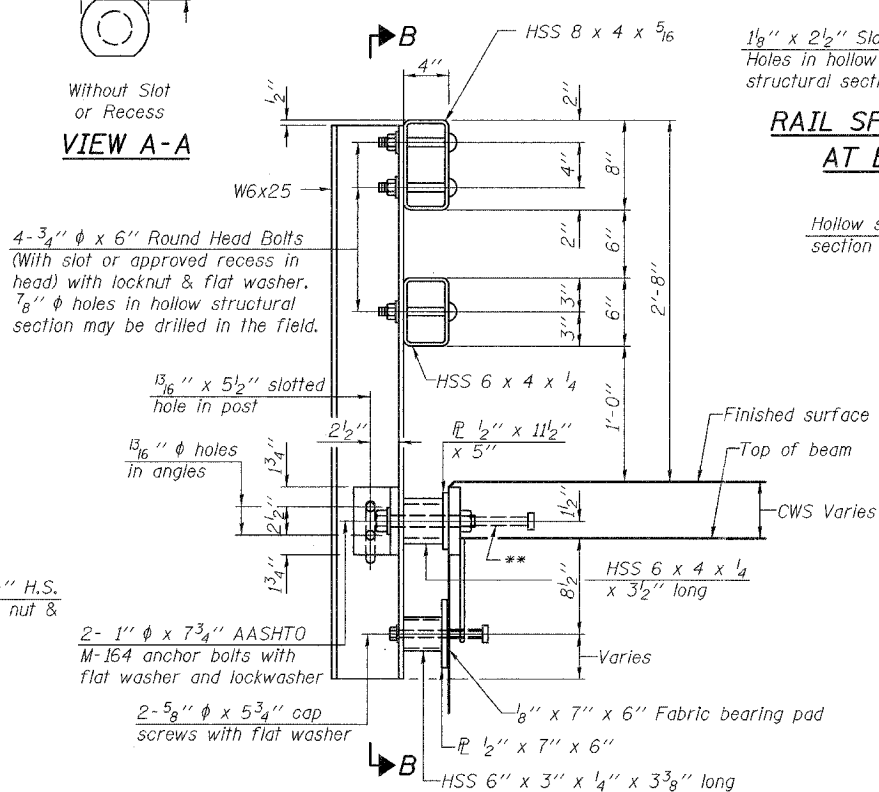
Contract #78032



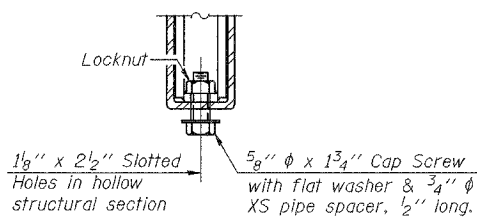
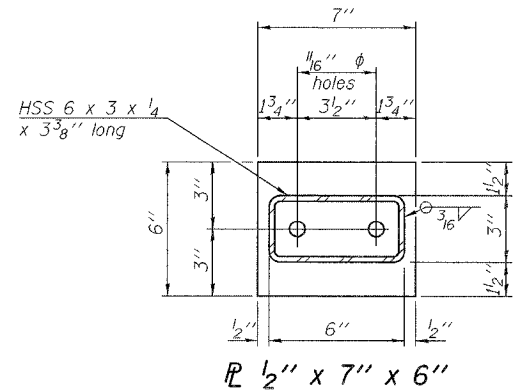
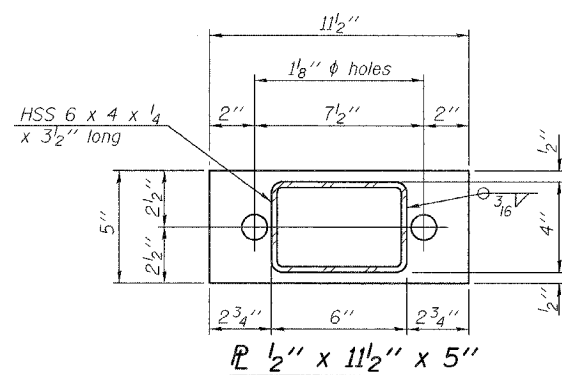
SECTION B-B



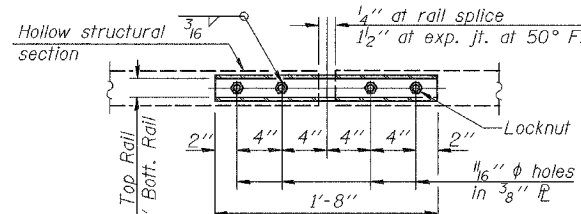
SECTION C-C



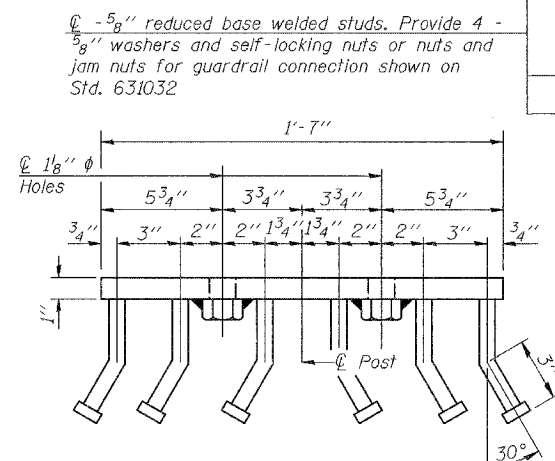
SECTION AT RAIL POST



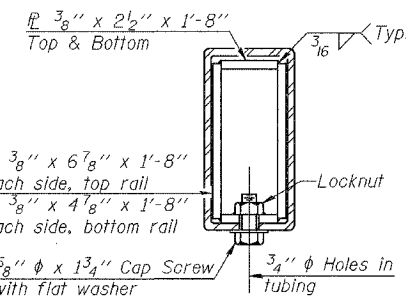
RAIL SPLICE CONNECTION
AT EXPANSION JT.



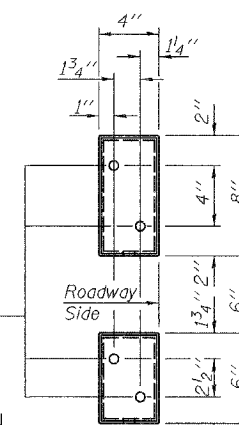
PLAN-BOTT. SPLICE R
TYPICAL



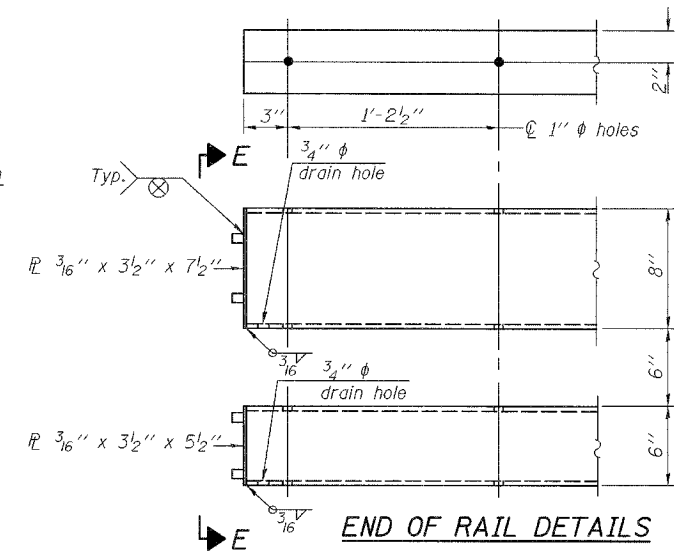
VIEW D-D



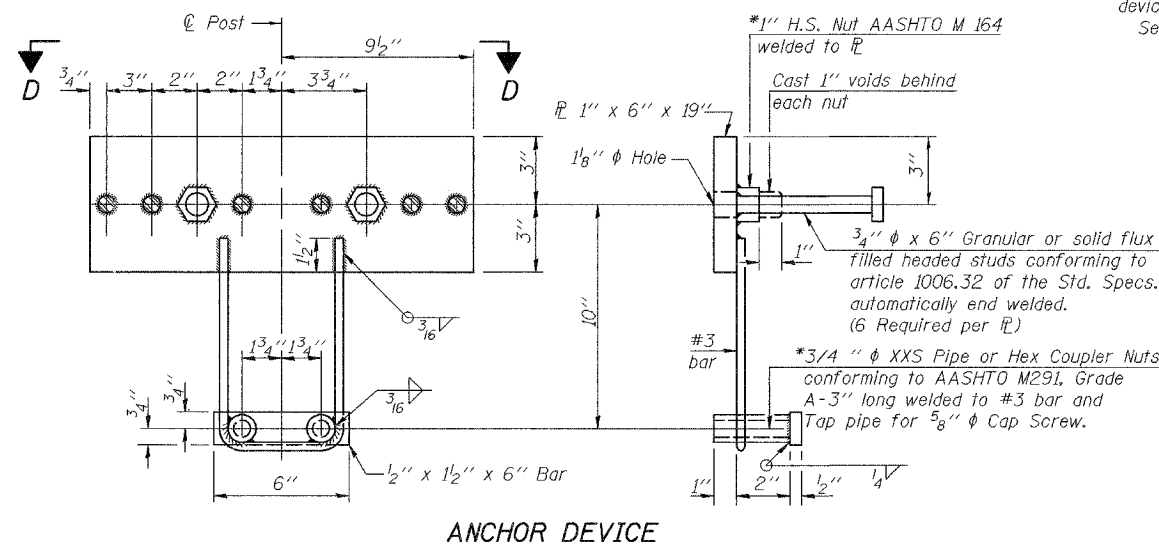
SECTION AT
RAIL SPLICE



VIEW E-E



END OF RAIL DETAILS



ANCHOR DEVICE

Notes:
All field drilled holes shall be coated with an approved zinc rich paint before erection.
For multi-span bridges, sufficient 1/4" x 6" x 1'-2" galvanized steel shims shall be provided to align rail between adjacent spans. Cost included with Steel Railing, Type SM.
Steel rail elements shall be galvanized according to Article 509.05 of the Standard Specifications.
**The studs of the anchor devices shall be placed below the top reinforcement bars and the outermost longitudinal reinforcement bar shall be placed directly above the studs of the rail post anchor device.
See Sheet 11 of 16 for rail post spacing.

BILL OF MATERIAL

Item	Unit	Quantity
Steel Railing, Type SM	Foot	223

STEEL RAILING, TYPE SM
WITH CONCRETE WEARING SURFACE
ILL. ROUTE 127 OVER HOGSKIN CREEK
F.A.S. ROUTE 1907 - SECTION 21BR-1
ALEXANDER COUNTY
STATION 281+60.00
STRUCTURE NO. 002-0028

MODJESKI and MASTERS
Consulting Engineers
SINCE 1893

DESIGNED	YSS
CHECKED	RLM
DRAWN	PRC
CHECKED	YSS

R-34CWS

9-3-07

(6'-3" Maximum Post Spacing) (5" minimum to 7 7/8" maximum CWS thickness)

*Threaded areas shall be plugged or blocked off during casting of beam. Galvanized after fabrication.