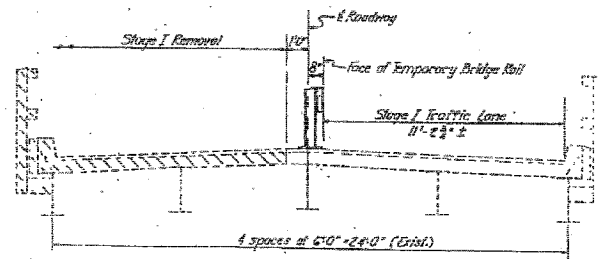
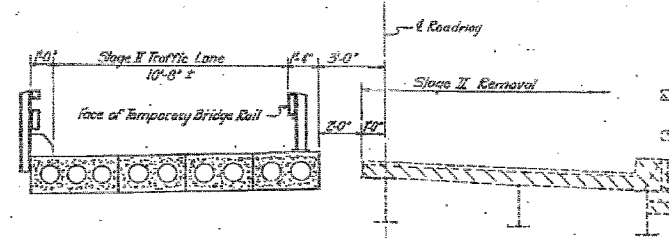


STATE OF ILLINOIS
DEPARTMENT OF TRANSPORTATION

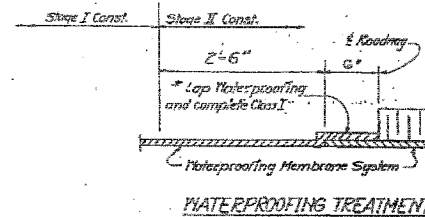
PROJECT NO.	21B-1	SECTION	ALEXANDER	SHEET NO.	24	TOTAL SHEETS	12
SHEET NO. 2							



STAGE I REMOVAL
(Looking North)

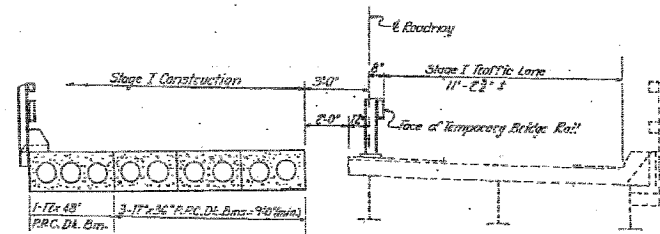


STAGE II REMOVAL
(Looking North)

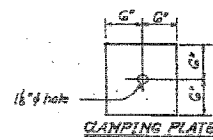


WATERPROOFING TREATMENT

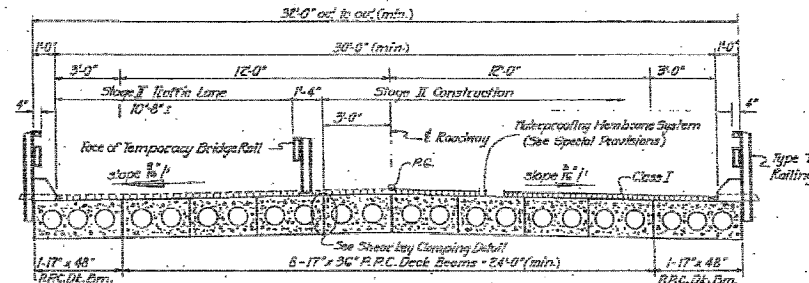
- Class I and Waterproofing top shall be completed after:
- 1) The deck beams for Stage II Const. are erected, grouted and Waterproofing and Class I are in place.
 - 2) Temporary Bridge Rail for Stage II Roadway has been removed.
 - 3) Shear key clamping devices have been removed.



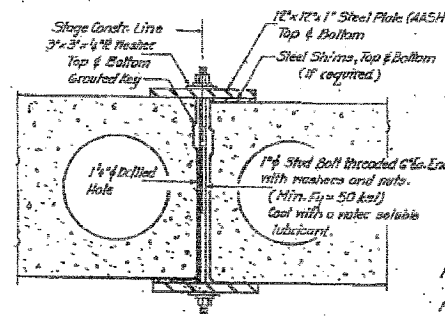
STAGE I CONST.
(Looking North)



CLAMPING PLATE

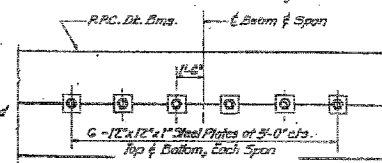


STAGE II CONST.
(Looking North)



SECTION

SHEAR KEY CLAMPING DETAIL AT STAGE CONST. JT.



PLAN

- Notes:
- See Special Provisions for Slope Construction Precast Prestressed Concrete Deck Beams.
 - See Slope Construction Detail for Traffic Lane.
 - Cast is incidental to Precast Prestressed Concrete Deck Beams.

STAGE CONSTRUCTION
I.A.S. RT. 1907 SEC. 21B-1
ALEXANDER COUNTY
STA. 231+60.00

DESIGNED	Patrick M. Pihme	DATE	July 9 1982
CHECKED	Raymond L. Brown	DESIGNED BY	James J. Rasmussen
DRAWN	SMC	PROJECT	RECONSTRUCTION OF BRIDGE AND STRUCTURES
CHECKED	A.L.D.	APPROVED	[Signature]



FOR INFORMATION ONLY

FILE NAME =	USER NAME = #USER#	DESIGNED - JMH	REVISED -	STATE OF ILLINOIS DEPARTMENT OF TRANSPORTATION	EXISTING STRUCTURE PLANS	F.A.S. RTE.	SECTION	COUNTY	TOTAL SHEETS	SHEET NO.	
#FILE#		DRAWN - AEC	REVISED -			1907	21B-1	ALEXANDER	82	30	
	PLOT SCALE = #SCALE#	CHECKED - JMH	REVISED -			CONTRACT NO. 78032					
	PLOT DATE = #DATE#	DATE - 03/04/08	REVISED -			FED. ROAD DIST. NO. 7 (ILLINOIS) FED. AID PROJECT					