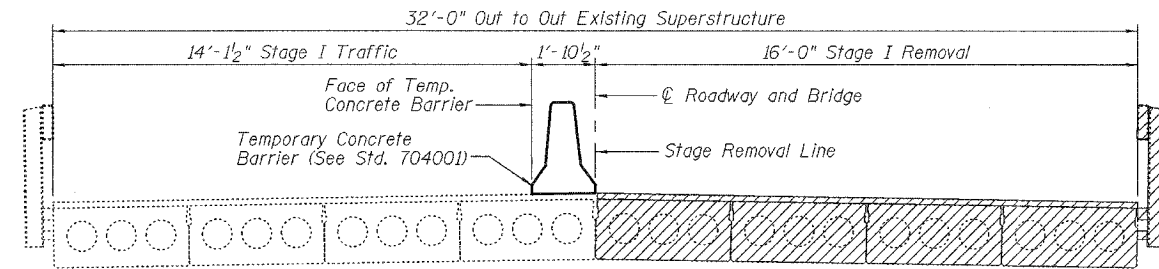


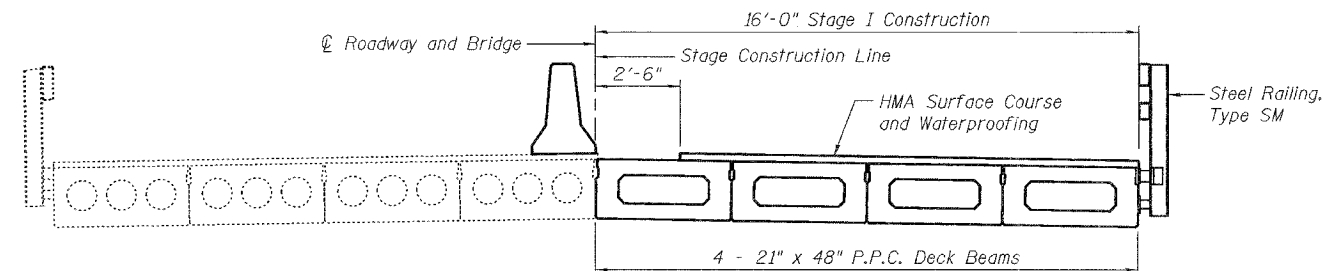
STATE OF ILLINOIS
DEPARTMENT OF TRANSPORTATION

ROUTE NO. F.A.P. 132	SECTION 102BR-1	COUNTY MASSAC	TOTAL SHEETS 82	SHEET NO. 56	SHEET NO. 3 16 SHEETS
FED. ROAD DIST. NO. 7		ILLINOIS		FED. AID PROJECT-	

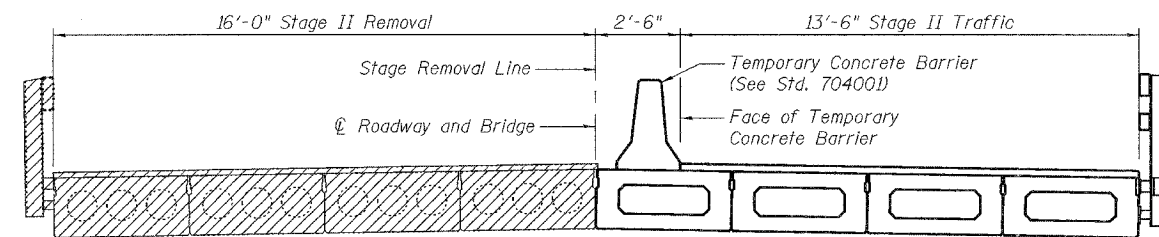
Contract #78032



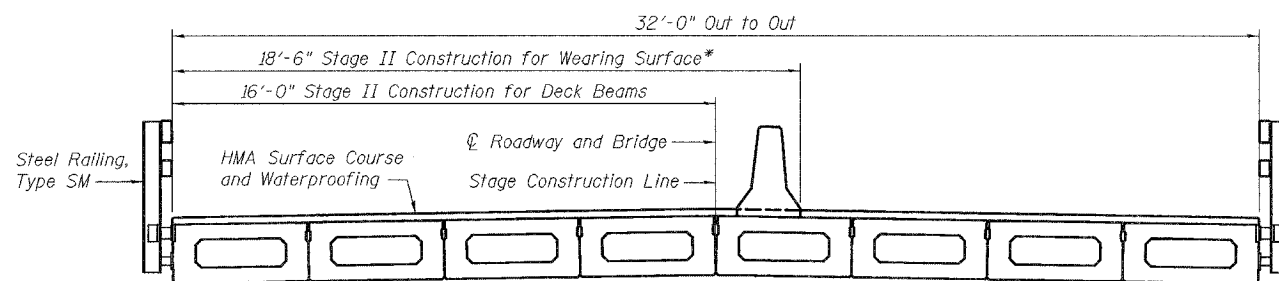
STAGE I REMOVAL
(Looking Upstation)



STAGE I CONSTRUCTION
(Looking Upstation)

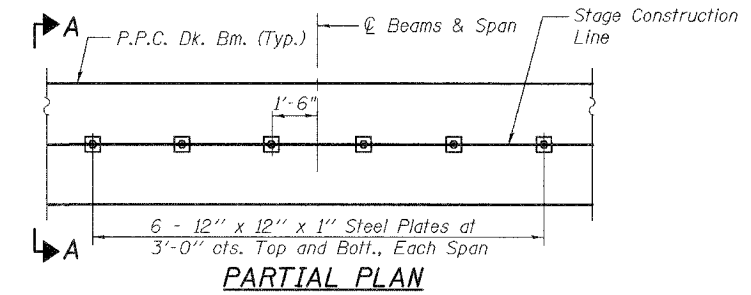


STAGE II REMOVAL
(Looking Upstation)

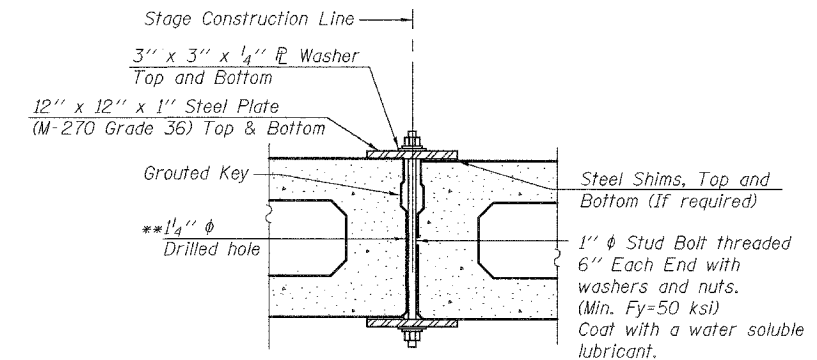


STAGE II CONSTRUCTION
(Looking Upstation)

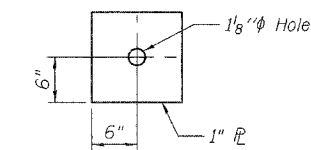
* Temporary concrete barrier to be removed immediately prior to placement of HMA wearing surface.



PARTIAL PLAN



SECTION A-A



CLAMPING PLATE

SHEAR KEY CLAMPING DETAILS

See Article 504.06 of the Standard Specifications for Stage Construction of Precast Prestressed Concrete Deck Beams.

Cost included with Precast Prestressed Concrete Deck Beams (21" Depth).

** As an alternate to the drilled holes, the Contractor may request the Fabricator to cast 2" diameter semi-circular recesses in the sides of each beam adjacent to the stage construction line. These recesses should align to form a hole at the appropriate locations for the clamping device bolts. If the Contractor elects to use this alternate, the details shall be identified on the shop drawings.

STAGE CONSTRUCTION DETAILS
ILL. ROUTE 145 OVER MASSAC CREEK
F.A.P. ROUTE 132 - SECTION 102BR-1
MASSAC COUNTY
STATION 533+27.15
STRUCTURE NO. 064-0008



DESIGNED	RLM
CHECKED	YSS
DRAWN	PRC
CHECKED	RLM

02/04/08