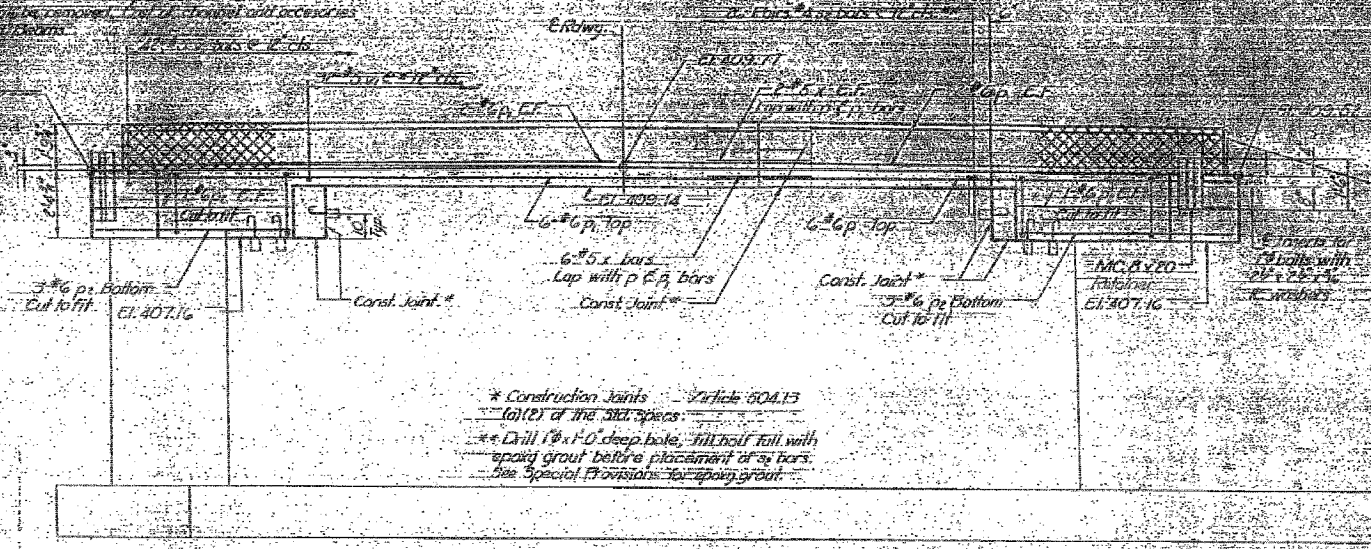
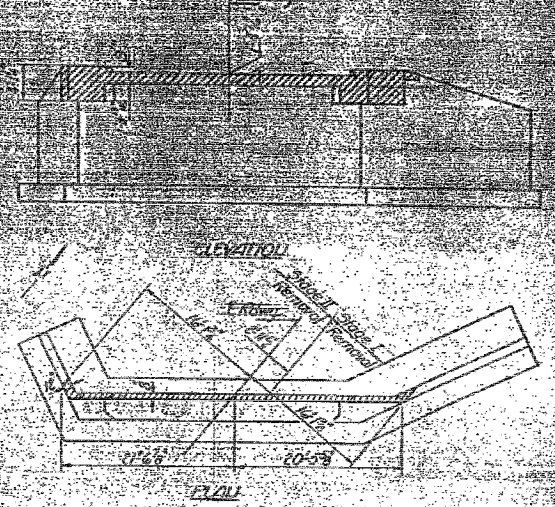


STATE OF ILLINOIS
DEPARTMENT OF TRANSPORTATION

1. The Contractor shall provide all necessary forms and equipment for the construction of the bridge. The Contractor shall be responsible for the safety of all personnel and equipment on the job site. The Contractor shall be responsible for the removal of all debris and materials from the job site. The Contractor shall be responsible for the maintenance of all equipment and materials used on the job site.

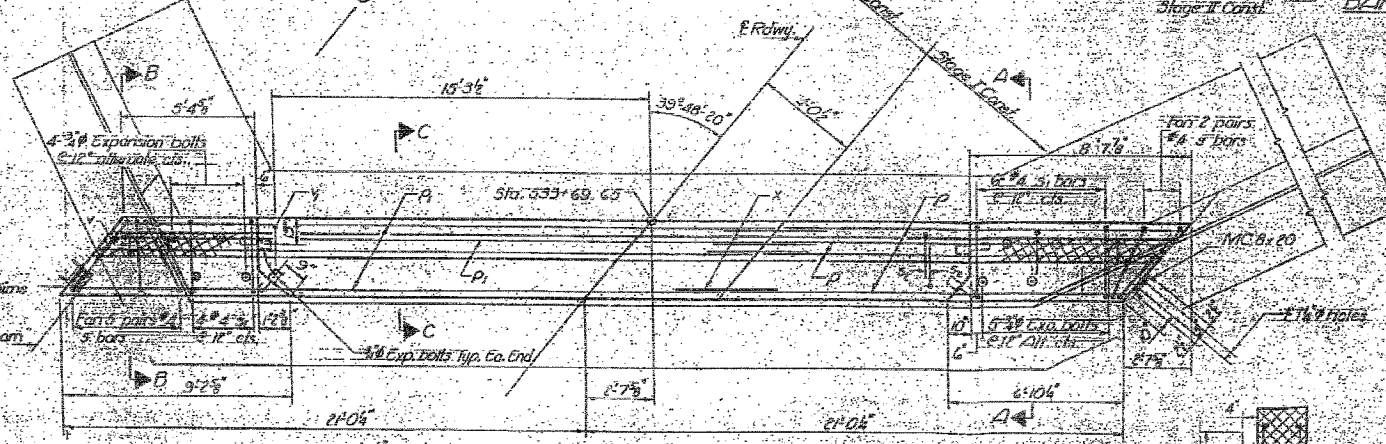


* Construction Joints - Article 604.13
(a)(2) of the Std. Specs.
** Drill 1" x 1'-0" deep hole, fill hole with epoxy grout before placement of s. bars.
See Special Provisions for epoxy grout.



CONCRETE REMOVAL

MILL BAR LAPS
#3 Bar - 18"
#6 Bar - 20"



* Bars shall conform to the requirements of AASHTO M31 or M33 except that the min. yield strength shall not be less than 55,000 psi nor more than 65,000 psi.

Check in field for Stage II Const.

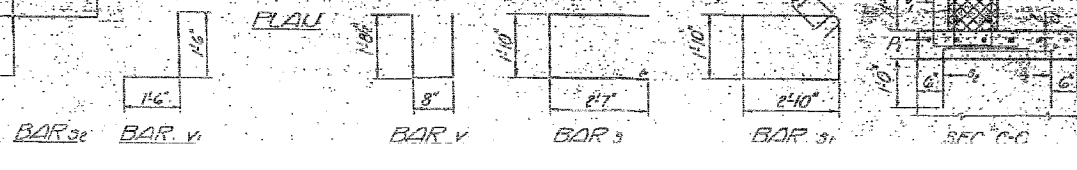
BAR X

BILL OF MATERIAL

Bar	Size	Length	Quantity	Weight
D	10	4.6	15.0	1.0
D1	10	4.6	10.0	0.7
D2	10	4.6	8.0	0.5
S	14	4.4	7.0	0.5
S1	10	4.4	10.0	0.7
S2	10	4.4	7.0	0.5
V	10	4.4	4.0	0.3
V1	10	4.4	3.0	0.2
X	10	4.4	4.0	0.3

Class V Concrete: 5.0 cu. yd.
Reinforcement Bars: 1310 lbs.
Concrete Formwork: 1200 sq. ft.
Expansion Bolts: 15 each

DESIGNED: *William W. Hanks*
CHECKED: *EAS*
DRAWN: *AD*
EXAMINED: *ASB*
APPROVED: *EAS*



NORTH DEPARTMENT
EAST DEPARTMENT
MASSAC COUNTY



FOR INFORMATION ONLY

FILE NAME =	USER NAME = #USER#	DESIGNED - JMH	REVISED -	STATE OF ILLINOIS DEPARTMENT OF TRANSPORTATION	EXISTING STRUCTURE PLANS	F.A.P. RTE. 132	SECTION 102BR-1	COUNTY MASSAC	TOTAL SHEETS 82	SHEET NO. 75		
#FILEL#	PLOT SCALE = #SCALE#	DRAWN - AEC	REVISED -			SCALE: NONE	SHEET NO. OF SHEETS STA. TO STA.	CONTRACT NO. 78032				
	PLOT DATE = #DATE#	CHECKED - JMH	REVISED -					FED. ROAD DIST. NO. 7 (ILLINOIS) FED. AID PROJECT				
		DATE - 02/04/08	REVISED -									