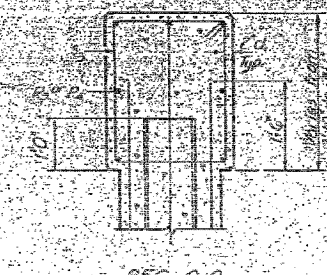
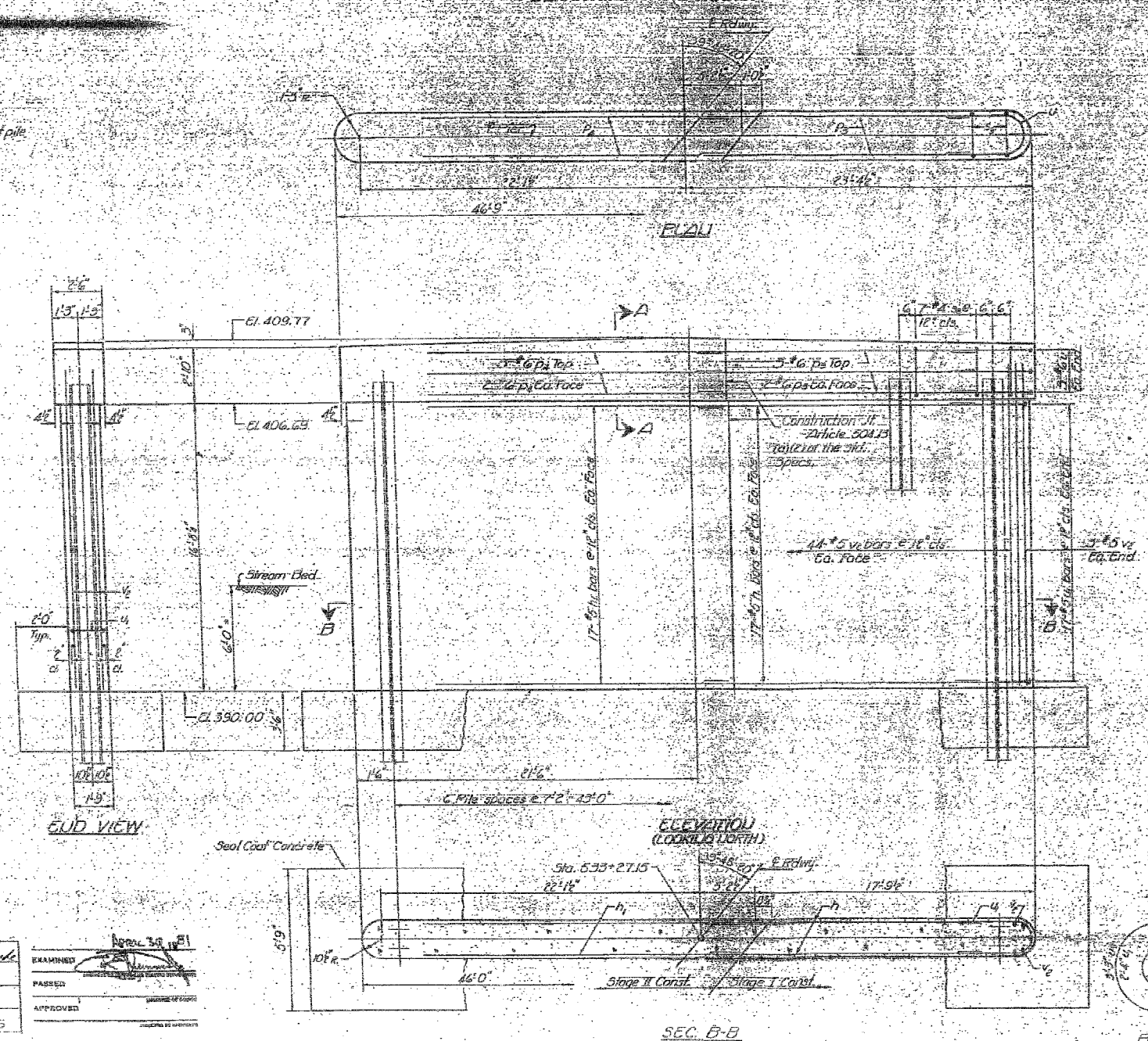


STATE OF ILLINOIS  
DEPARTMENT OF TRANSPORTATION

DATE	BY	NO.	REVISION

FILE DATA

Type: Steel HP 8x36  
Capacity: Drive to refusal  
Set Length: 27.0  
No. Piles: 6 plus one test pile



MINI BAR LAPS  
#5 bar = 1'8"  
#6 bar = 2'0"

BILL OF MATERIAL

Qty	Size	Length	Shape
34	#5	18'-0"	
34	#5	25'-9"	
7	#6	19'-6"	
7	#6	24'-10"	
46	#4	40'-0"	
6	#6	8'-9"	
34	#5	7'-4"	
36	#3	18'-0"	
	Crack & Concrete	Cu Yds	62.0
	Reinforcement Bars	Libs	4430
	Steel Plates (HP 8x36)	Lin. Ft.	162
	Cast-in-place Concrete	Cu Yds	1
	Steel Coat Concrete	Cu Yds	37.5

DESIGNED	APR 30 2011
CHECKED	
DRAWN	
CHECKED	



FOR INFORMATION ONLY

FILE NAME =	USER NAME = #USER#	DESIGNED - JMH	REVISED -	STATE OF ILLINOIS DEPARTMENT OF TRANSPORTATION	EXISTING STRUCTURE PLANS	F.A.P. RTE.	SECTION	COUNTY	TOTAL SHEETS	SHEET NO.	
#FILE#		DRAWN - AEC	REVISED -			132	102BR-1	MASSAC	82	76	
PLOT SCALE = #SCALE#		CHECKED - JMH	REVISED -			SCALE: NONE	SHEET NO. OF SHEETS STA.	CONTRACT NO. 78032			
PLOT DATE = #DATE#		DATE - 02/04/08	REVISED -			FED. ROAD DIST. NO. 7 (ILLINOIS) FED. AID PROJECT					