

STATE OF ILLINOIS  
DEPARTMENT OF TRANSPORTATION  
DIVISION OF HIGHWAYS

**PROPOSED  
HIGHWAY PLANS**

FAP ROUTE 885 (IL ROUTE 146)  
SECTIONS 111BR-1, 111BR-2  
PROJECT: BHF-0885(039)  
POPE COUNTY

C-99-013-08

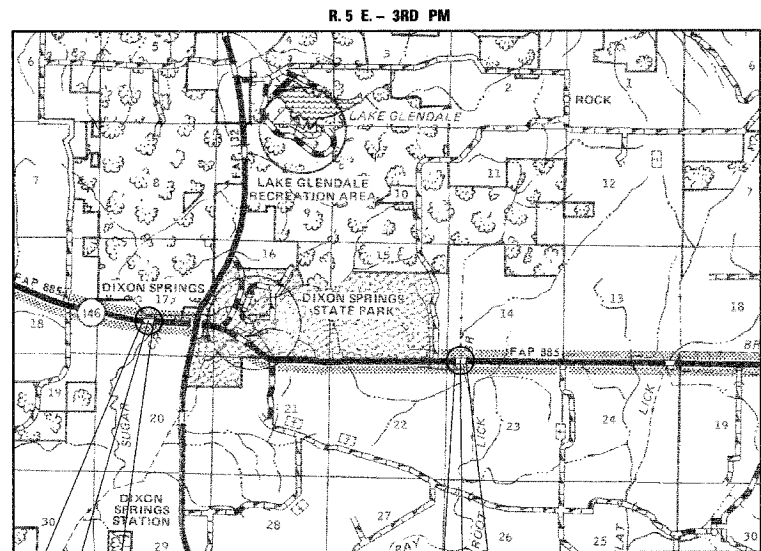
PPC DECK BEAM SUPERSTRUCTURE REPLACEMENTS  
OVER SUGAR CREEK AND ROOT LICK BRANCH

F.A.P. RTE.	SECTION	COUNTY	TOTAL SHEETS	SHEET NO.
885	111BR-1 & 111BR-2	POPE	69	1
FED. ROAD DIST. NO. 7		ILLINOIS	CONTRACT NO. 78033	

D-99-013-08

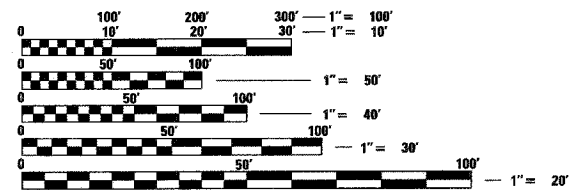


FOR INDEX OF SHEETS, SEE SHEET NO. 2  
FOR SUMMARY OF QUANTITIES, SEE SHEET NO. 3



**DESIGN DESIGNATION  
N.A.**

FAP ROUTE 885  
FUNCTIONAL CLASSIFICATION: MINOR ARTERIAL (NON-URBAN)  
DESIGN SPEED: 55 MPH  
POSTED SPEED: 55 MPH  
ADT: 1,290 (2007), 2,160 (2007)  
PV: 84%, 84%  
TRUCKS: 16%, 16%



FULL SIZE PLANS HAVE BEEN PREPARED USING STANDARD ENGINEERING SCALES. REDUCED SIZED PLANS WILL NOT CONFORM TO STANDARD SCALES. IN MAKING MEASUREMENTS ON REDUCED PLANS, THE ABOVE SCALES MAY BE USED.

J.U.L.I.E.  
JOINT UTILITY LOCATION INFORMATION FOR EXCAVATION  
1-800-892-0123  
OR 811

DISTRICT 9 NO. (618) 549-2171  
PROJECT ENGINEER: DAVID PICHE

TOWNSHIPS: WEBSTER AND COLUMBUS

CONTRACT NO. 78033

SECTION 111BR-1 BEGINS  
STATION 669+45.00

SECTION 111BR-1  
S.N. 076-0006  
STATION 671+76.00  
REMOVAL AND REPLACEMENT OF  
EXISTING SUPERSTRUCTURE  
OF A TWO SPAN BRIDGE  
91'-8" BK. TO BK. ABUTMENTS

SECTION 111BR-1 ENDS  
STATION 674+15.00

SECTION 111BR-2 ENDS  
STATION 819+90.00

SECTION 111BR-2  
S.N. 076-0008  
STATION 818+03.50  
REMOVAL AND REPLACEMENT OF  
EXISTING SUPERSTRUCTURE  
OF A SINGLE SPAN BRIDGE  
44'-9" BK. TO BK. ABUTMENTS

SECTION 111BR-2 BEGINS  
STATION 816+05.00

**LOCATION MAPS**

TOTAL LENGTH OF SECTION & PROJECT = 855.00 FEET = 0.162 MILES  
NET LENGTH OF SECTION & PROJECT = 855.00 FEET = 0.162 MILES



David W. Petermeier 4/23/08  
DAVID W. PETERMEIER  
EDWARDSVILLE, ILLINOIS  
ENGINEER NO. 062-052553  
EXPIRES NOV. 30, 2009



STATE OF ILLINOIS  
DEPARTMENT OF TRANSPORTATION  
DIVISION OF HIGHWAYS

SUBMITTED May 1, 2008  
Man C. Ramie  
DEPUTY DIRECTOR OF HIGHWAYS, REGION ENGINEER

June 27, 2008  
Eria E. Harms  
Interim ENGINEER OF DESIGN AND ENVIRONMENT

June 27, 2008  
Christine M. Reed  
DIRECTOR OF HIGHWAYS, CHIEF ENGINEER

**PRINTED BY THE AUTHORITY  
OF THE STATE OF ILLINOIS**

APRIL 2008