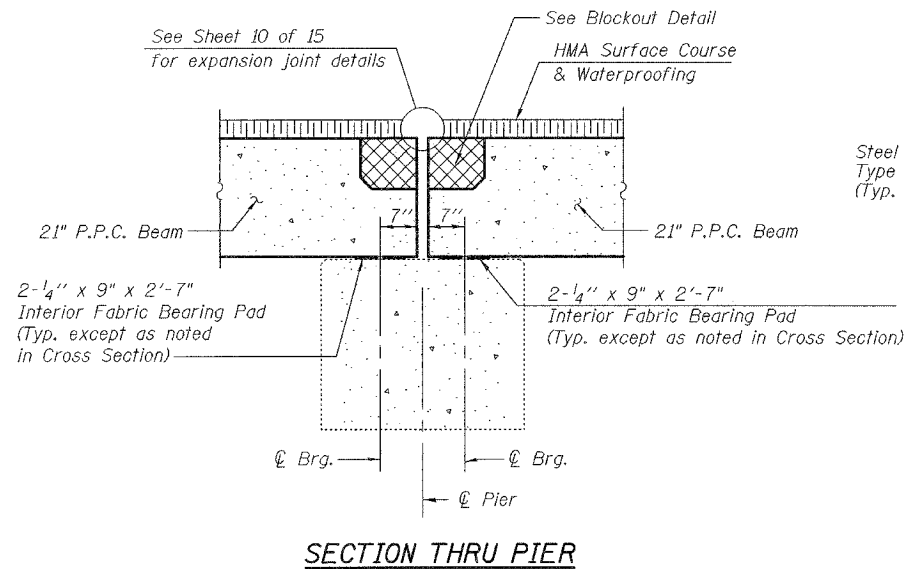


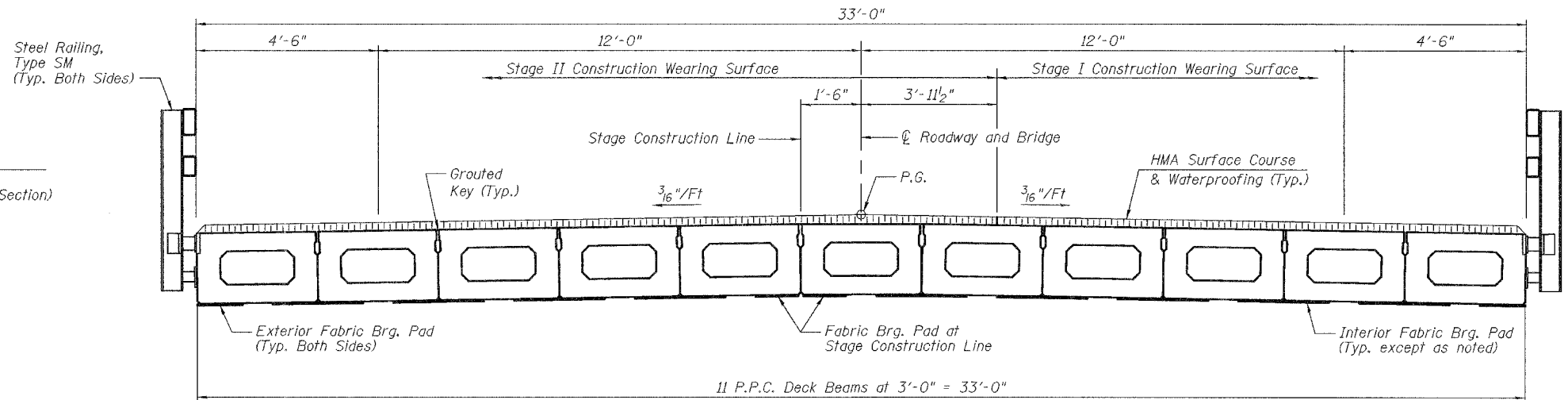
STATE OF ILLINOIS  
DEPARTMENT OF TRANSPORTATION

ROUTE NO. F.A.P. 885	SECTION 111BR-1	COUNTY POPE	SHEET NO. 69	SHEET 20	SHEET NO. 9 15 SHEETS
FED. ROAD DIST. NO. 7		ILLINOIS	FED. AID PROJECT		

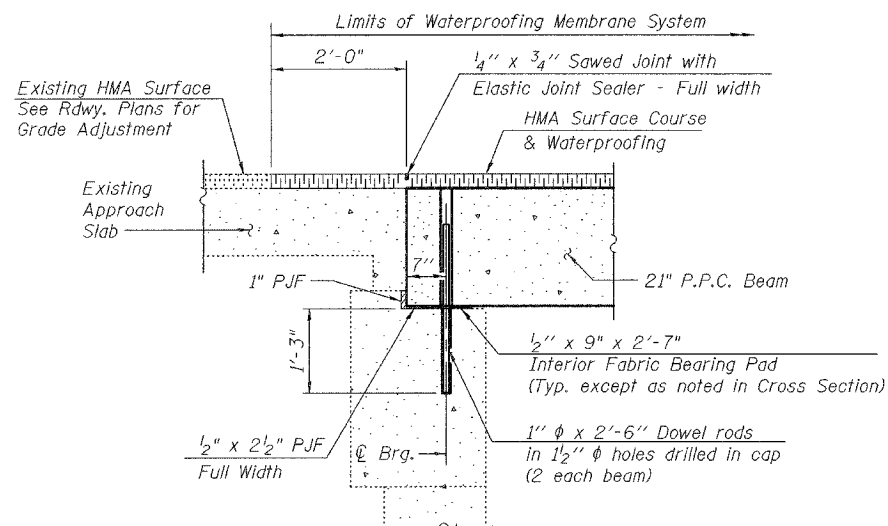
Contract #78033



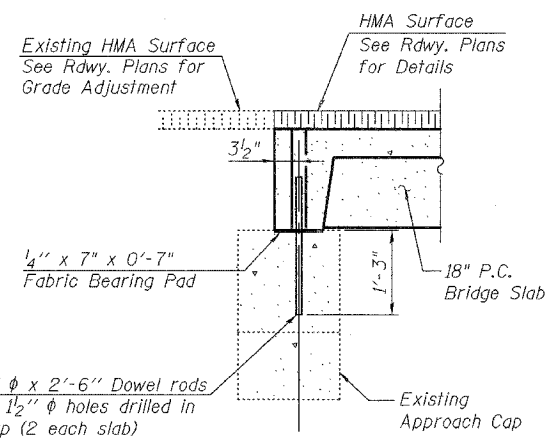
SECTION THRU PIER



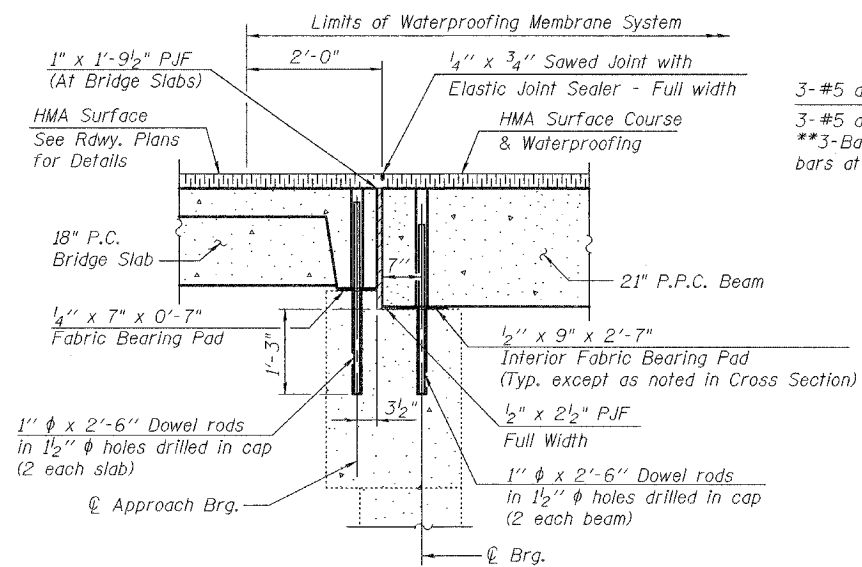
CROSS SECTION  
(Looking Upstair)



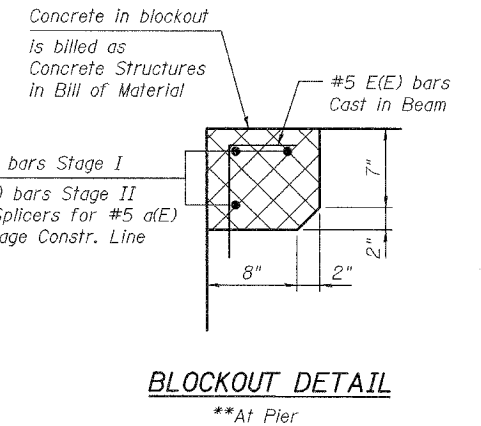
SECTION THRU ABUTMENT  
AT APPROACH SLAB



SECTION THRU  
APPROACH CAP



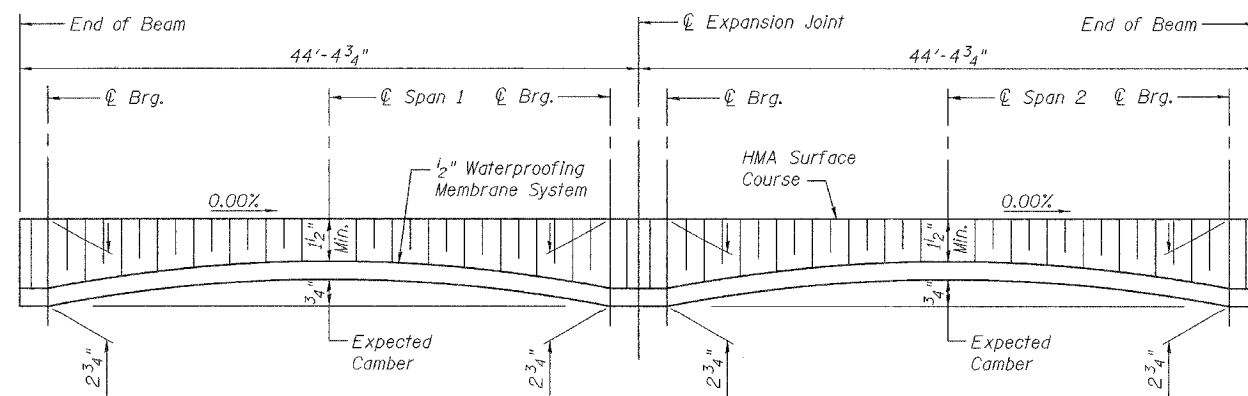
SECTION THRU ABUTMENT  
AT SHOULDER



BLOCKOUT DETAIL  
\*\*At Pier

BILL OF MATERIAL

Bar	No.	Size	Length	Shape
a(E)	6	#5	31'-2"	—
a1(E)	6	#5	25'-11"	—
Reinforcement Bars, Epoxy Coated			Pound	360
Concrete Structures			Cu. Yd.	2.6
Hot-Mix Asphalt Surface Course, Mix "C", N90			Ton	34
Waterproofing Membrane System			Sq. Yd.	352



HMA WEARING SURFACE PROFILE

Notes: Thickness shown for bridge spans is for all deck beams except the center deck beam. Thickness for the center deck beam will vary from those shown at beam edges to 5/16" additional at Brg.

Notes:  
After beams have been erected, holes shall be drilled into substructure and anchor dowels placed. Dowel holes shall be filled with non-shrink grout to top of beam and allowed to cure min. 24 hrs. prior to grouting the shear keys.  
All horizontal dimensions are at right angles to beam ends. Crosshatched areas to be poured after P.P.C. deck beams are in place and shear keys are grouted and cured.  
See Sheets 7 and 8 of 15 for bearing pad details.  
See Section 581 of the Standard Specifications for Waterproofing Membrane System.  
See Roadway Plans for HMA surface course, Mix "C", N90 mixture requirements. The HMA surface course shall be placed according to Section 582 of the Standard Specifications.

SUPERSTRUCTURE DETAILS  
ILL. ROUTE 146 OVER SUGAR CREEK  
F.A.P. ROUTE 885 - SECTION 111BR-1  
POPE COUNTY  
STATION 671+76.00  
STRUCTURE NO. 076-0006



DESIGNED	YSS
CHECKED	RLM
DRAWN	PRC
CHECKED	YSS

03/18/08