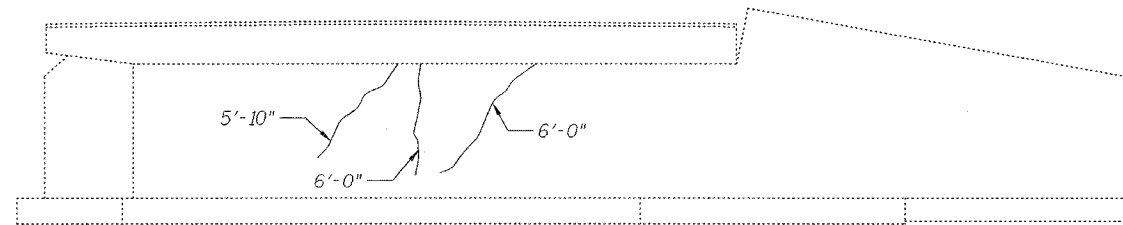


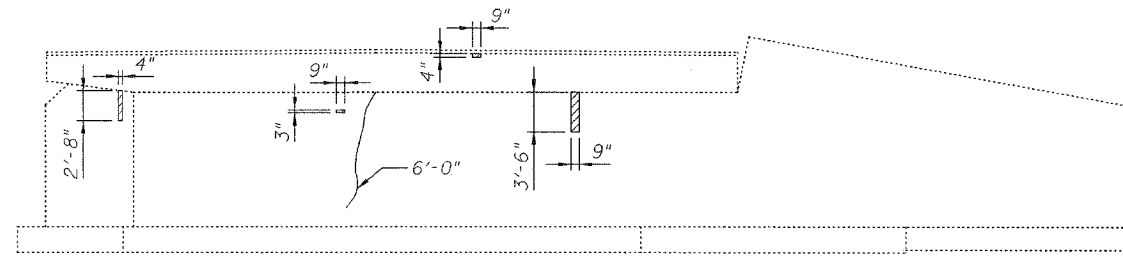
STATE OF ILLINOIS
DEPARTMENT OF TRANSPORTATION

ROUTE NO. F.A.P. 885	SECTION 111BR-1	COUNTY POPE	TOTAL SHEETS 69	SHEET NO. 24	SHEET NO. 13 15 SHEETS
FED. ROAD DIST. NO. 7		ILLINOIS FED. AID PROJECT-			

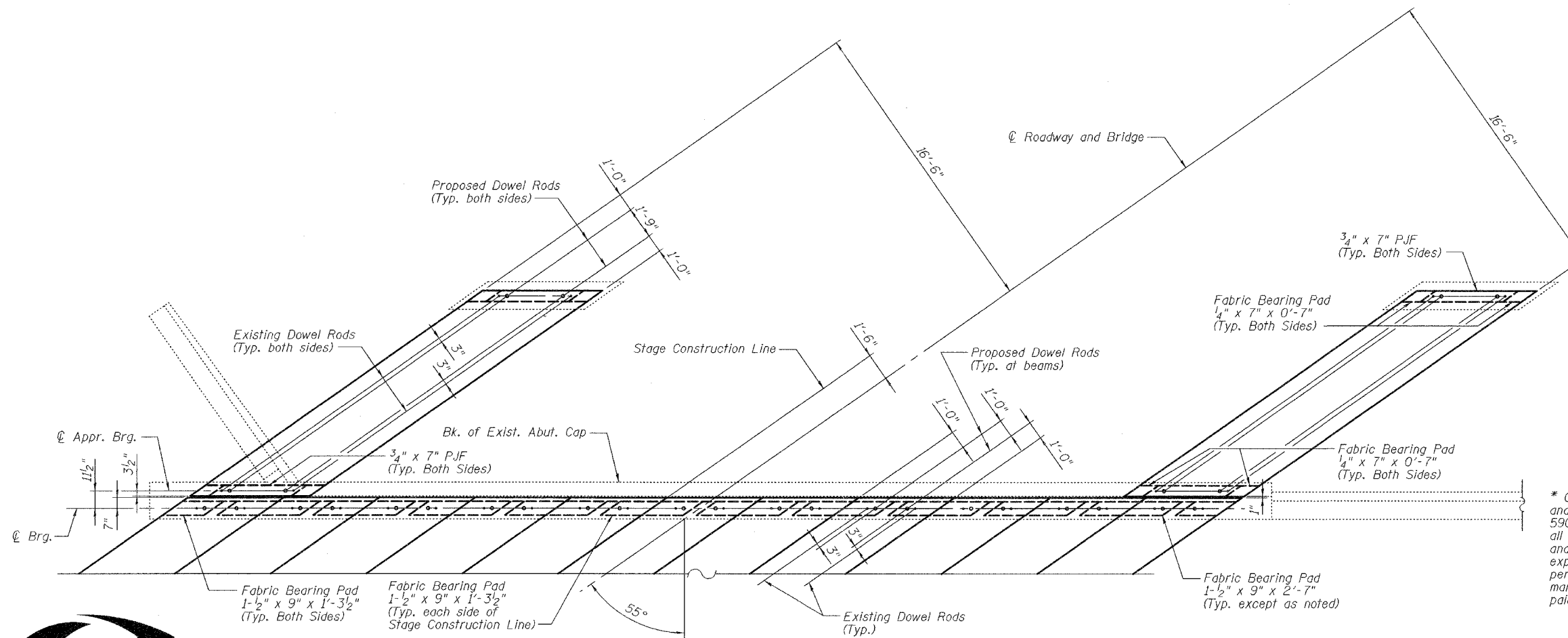
Contract #78033



ELEVATION - EAST ABUTMENT
(Looking East)



ELEVATION - WEST ABUTMENT
(Looking West)



Notes:
Existing dowel rods shall be burned off flush with the existing concrete face, ground smooth, and sealed with epoxy. Costs are included with Removal of Existing Superstructure and Removal of Existing Precast Concrete Units, respectively.
Concrete sealer shall be applied to concrete repair areas.
See Sheet 14 of 15 for Substructure Repair Bill of Material.

LEGEND

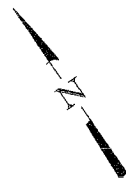
- Structural Repair of Concrete (Depth equal to or less than 5")
- Epoxy Crack Injection*
- Existing Dowel Rod
- Proposed Dowel Rod

* Cracks with openings greater than 1/2 inch shall be prepared and sealed according to the applicable requirements of Section 590 of the Standard Specifications with the following exceptions: all loose material along the edges of the crack shall also be removed and the crack shall be sealed with an expansive cement grout. The expansive cement grout shall be approved by the Engineer prior to performing repairs and shall be installed according to the manufacturer's recommendations. This work shall be measured and paid for according to Articles 590.04 and 590.05, respectively.



DESIGNED	YSS
CHECKED	RLM
DRAWN	PRC
CHECKED	YSS

03/18/08



PLAN - EAST ABUTMENT BEARING SEAT

(East Abutment shown, West Abutment similar)

Bituminous wearing surface and existing approach pavement not shown for clarity.

ABUTMENT REPAIRS
ILL. ROUTE 146 OVER SUGAR CREEK
F.A.P. ROUTE 885 - SECTION 111BR-1
POPE COUNTY
STATION 671+76.00
STRUCTURE NO. 076-0006