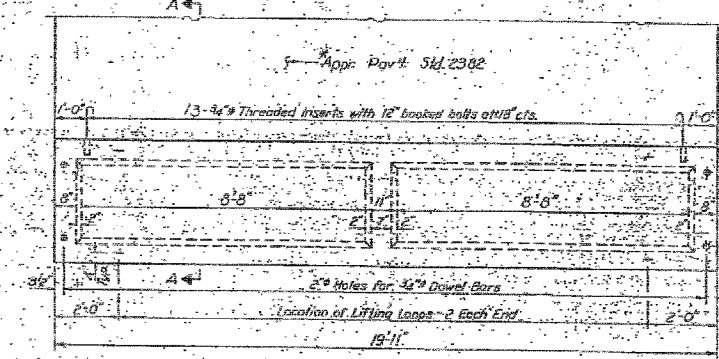
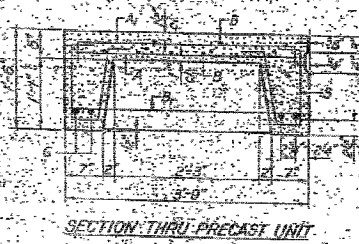
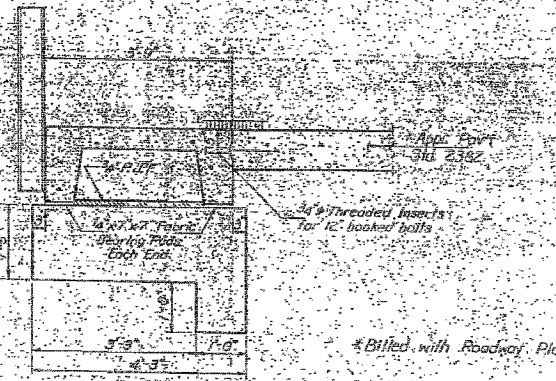
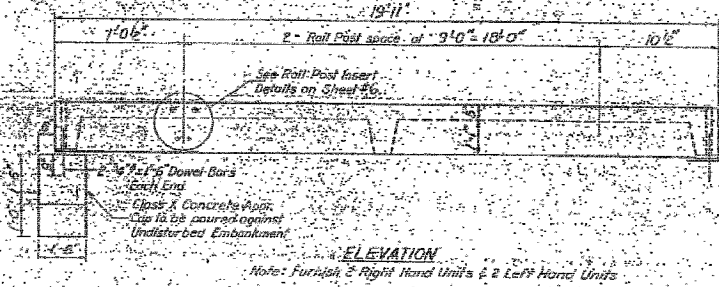


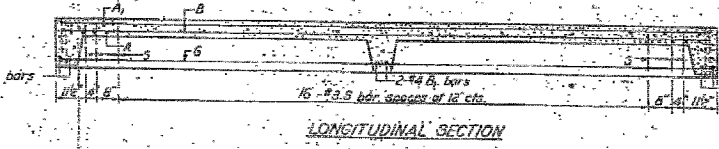
STATE OF ILLINOIS  
DEPARTMENT OF TRANSPORTATION

Project No.	111BR-2	Sheet No.	14
Contract No.	78033	Scale	AS SHOWN

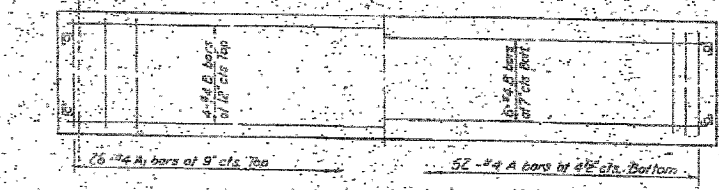


**BAR LIST - ONE UNIT**  
Reinforcement to be cast into slab

Bar No.	Size	Length	Shape
A	#4	8'-1"	
B	#4	4'-0"	
C	#4	19'-11"	
D	#4	3'-6"	
E	#3	3'-4"	



**NOTES**  
Unless otherwise approved by the Engineer, lifting loops shall be 2-#4 Class wire rope with fiber core and shall have a minimum ultimate strength of 2100 lbs. or 2-#4 ERW Rod Strands as shown on sheet #4. Holes shall be drilled and grouted in place.  
Cost of reinforcement and accessories confine the slab unit, bearing posts, finishing, drilling for, placing and grouting anchor bolts and #4 hooked bolts is included in Unit-bid price for "Precast Concrete Bridge Slab".  
The Precast Concrete Bridge Slab shall be erected and aligned with the exterior face of the exterior Deck Beam, after Deck Beams are in final position.



**BILL OF MATERIAL**

Item	Unit	Quantity
Precast Concrete Bridge Slab	Sq. Ft.	289
Class X Concrete	Cu. Yd.	16

DESIGNED: M.K.C. R.D. AK  
CHECKED: G.T.C. RB  
DRAWN: R. Daly  
CHECKED: A. Kashani

APPROVED: [Signature] 25 2001  
APPROVED: [Signature]

**APPROACH DETAILS**  
RA-RT-885-SEC.111B-DP-2  
POPE COUNTY  
STA. 016+03.50



FOR INFORMATION ONLY

FILE NAME =	USER NAME = #USER#	DESIGNED - JHM	REVISED -	STATE OF ILLINOIS DEPARTMENT OF TRANSPORTATION	EXISTING STRUCTURE PLANS	F.A.P. RTE.	SECTION	COUNTY	TOTAL SHEETS	SHEET NO.
#FILE#		DRAWN - AEC	REVISED -			885	111BR-2	POPE	69	62
	PLOT SCALE = #SCALE#	CHECKED - JMH	REVISED -			CONTRACT NO. 78033				
	PLOT DATE = #DATE#	DATE - 03/18/08	REVISED -			FED. ROAD DIST. NO. 7 ILLINOIS FED. AID PROJECT				