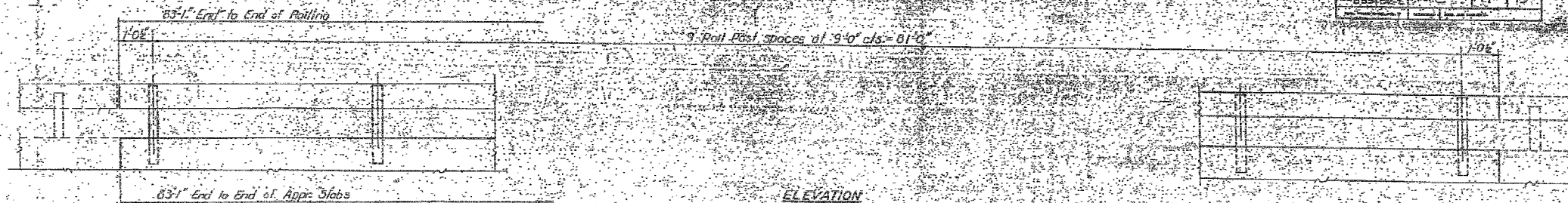
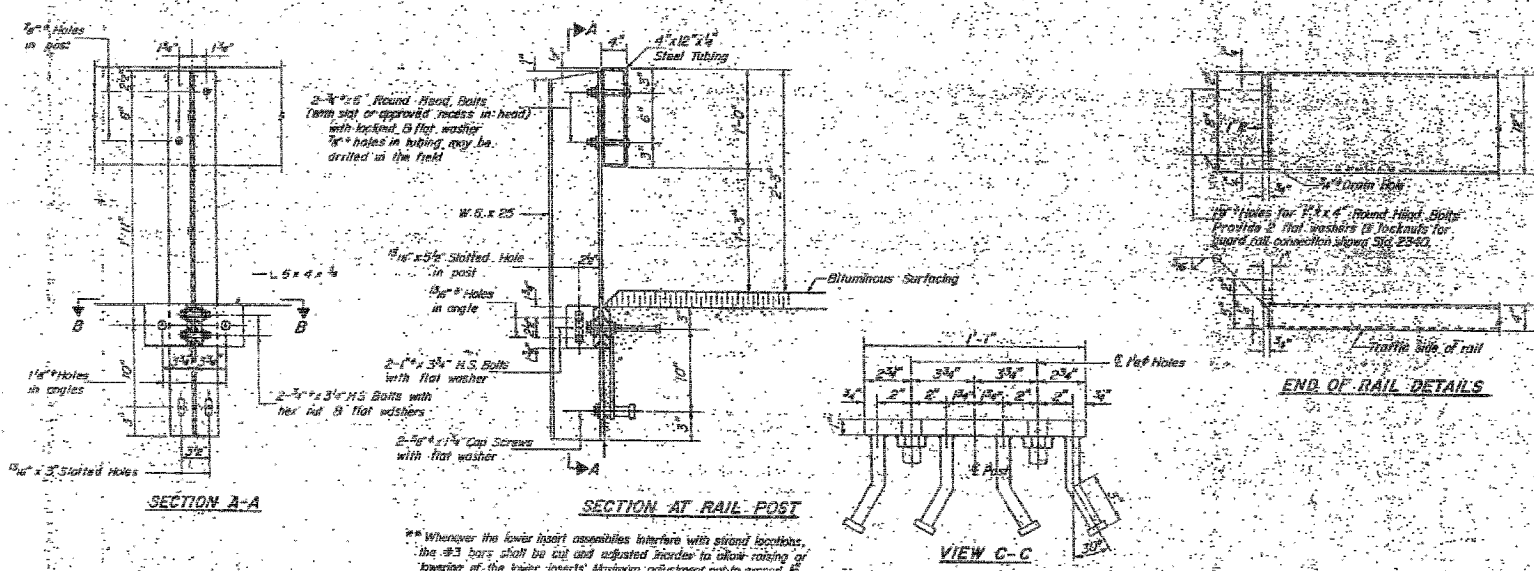


STATE OF ILLINOIS  
DEPARTMENT OF TRANSPORTATION

Project No.	885	Section	111BR-2	Sheet No.	63
Contract No.		Stationing		Scale	



ELEVATION



**NOTES**

Hollow structural steel tubing shall conform to the requirements of ASTM designation A-500 Grade B Structural Steel Tubing.

All other steel shapes and plates shall conform to the requirements of AASHTO M-223, Grade 50.

Bolts, cap screws, and nuts shall conform to the requirements of ASTM designation A-307 except for high strength bolts, nuts and washers which shall conform to AASHTO M-59.

All bolts, cap screws, washers and lock washers shall be galvanized in accordance with AASHTO M-252.

All posts, railings, rail splices, anchor devices and angles shall be galvanized after shop fabrication in accordance with AASHTO M-111 and ASTM A-365. Galvanizing will then not be required.

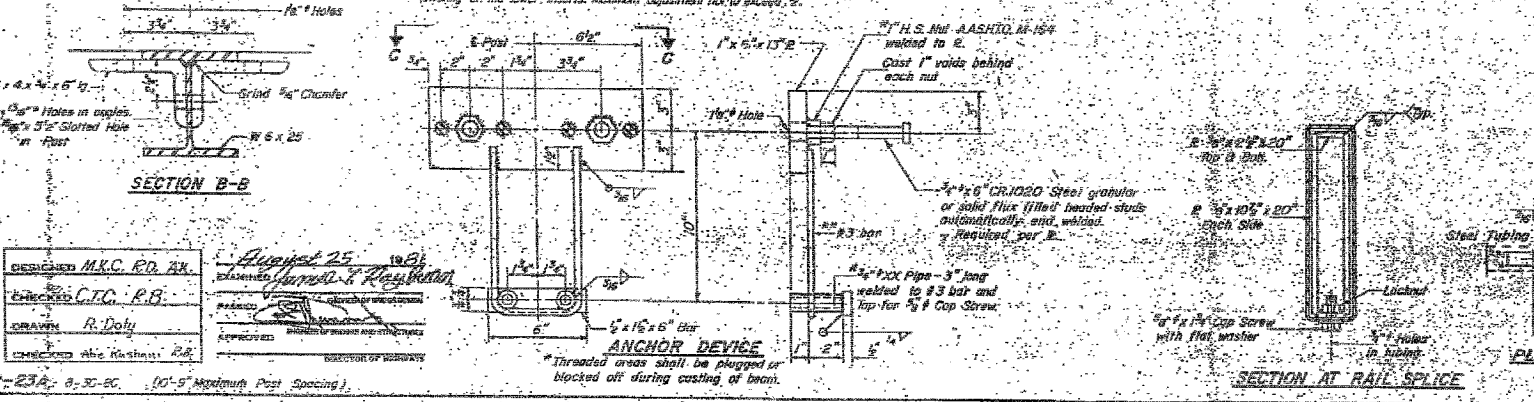
Welding shall be in accordance with Section 508 of the Standard Specifications, except as noted, but shall be done for the contract unit price per pound for STEEL RAILING, TYPE S-1.

All fast drilled holes shall be coated with an approved zinc rich paint before erection.

The lower portion of the post flange in contact with concrete shall receive two coats of epoxy paint conforming to Section 714.08 Type B or place 1/2" fabric bearing pad between the post and concrete.

The 1/2" high strength bolts used to connect the 6" x 4" x 1/2" angles to the post shall be tightened in accordance with Article 602D(4)(b) of the Standard Specifications. The 1/2" high strength bolts connecting the angles to the concrete shall be tightened to a snug fit and given an additional 1/4 turn. The 3/8" cap screws in bottom of posts shall be tightened to a snug fit only.

END OF RAIL DETAILS



**BILL OF MATERIAL**

Item	UNIT	Quantity
Steel Railing, Type S-1	Lin. Ft.	165

**TYPE S-1  
STEEL RAILING**  
I.A. R1-025 SEC. 111B-DR-2  
POPE COUNTY  
STA. 818+05.50

DESIGNED M.K.C. RD. 7X  
CHECKED C.T.G. P.B.  
DRAWN R. Doty  
CHECKED Alie Kushnir, P.E.  
August 25, 1991  
DIRECTOR OF HIGHWAYS

**ANCHOR DEVICE**  
Threaded areas shall be plugged or blocked off during casting of beam.



FOR INFORMATION ONLY

FILE NAME =	USER NAME = #USER#	DESIGNED - JHM	REVISED -	STATE OF ILLINOIS DEPARTMENT OF TRANSPORTATION	EXISTING STRUCTURE PLANS	F.A.P. RTE.	SECTION	COUNTY	TOTAL SHEETS	SHEET NO.
#FILE#		DRAWN - AEC	REVISED -			885	111BR-2	POPE	69	63
	PLOT SCALE = #SCALE#	CHECKED - JMH	REVISED -			SCALE:	SHEET NO. OF SHEETS	STA.	TO STA.	CONTRACT NO. 78033
	PLOT DATE = #DATE#	DATE - 03/18/08	REVISED -			FED. ROAD DIST. NO. 7 ILLINOIS FED. AID PROJECT				