

FAP RTE	SECTION	COUNTY	TOTAL SHEETS	SHEET NO.
873 & 782	107BR-1 & 111BR-1	FRANKLIN & GALLATIN	73	1

INDEX OF SHEETS

SHEET NO.	DESCRIPTION
ROADWAY PLANS SN 028-0040	
1.	COVER SHEET
2.	GENERAL NOTES AND STANDARDS
3.	SUMMARY OF QUANTITIES
4.	TYPICAL SECTIONS
5.	SCHEDULES OF QUANTITIES
6.	FAP RTE 873 (IL 149) PLAN AND PROFILE
7.-8.	STAGE CONSTRUCTION PLANS
9.	WIDE LOAD DETOUR
10.	EROSION CONTROL AND DRAINAGE PLANS
11.	MISCELLANEOUS DETAILS
STRUCTURE PLANS SN 028-0040	
12.	GENERAL PLAN
13.	GENERAL DATA
14.	STAGE CONSTRUCTION DETAILS
15.	TEMPORARY CONCRETE BARRIER
16.	SUPERSTRUCTURE
17.-18.	SUPERSTRUCTURE DETAILS
19.	APPROACH DETAILS
20.	SUPERSTRUCTURE AND APPROACH DETAILS
21.	STEEL RAILING, TYPE SM
22.	STRIP SEAL EXPANSION JOINT
23.	WEST ABUTMENT
24.	WEST ABUTMENT DETAILS
25.	EAST ABUTMENT
26.	EAST ABUTMENT DETAILS
27.	BAR SPLICER ASSEMBLY DETAILS
EXISTING STRUCTURE PLANS SN 028-0040	
28.-36.	EXISTING STRUCTURE PLANS
CROSS SECTIONS SN 028-0040	
37.-40.	FAP RTE 873 (IL 149) CROSS SECTIONS

INDEX OF SHEETS

SHEET NO.	DESCRIPTION
ROADWAY PLANS SN 030-0018	
41.	TYPICAL SECTIONS
42.-43.	SCHEDULE OF QUANTITIES
44.	FAP RTE 782 (IL 1) PLAN AND PROFILE
45.	BENCHMARKS AND CROSS-TIES
46.	STAGE CONSTRUCTION PLANS
47.	WIDE LOAD DETOUR
48.	EROSION CONTROL PLAN
49.	MISCELLANEOUS DETAILS
STRUCTURE PLANS SN 030-0018	
50.	GENERAL PLAN AND ELEVATION
51.	STAGE CONSTRUCTION
52.	TEMPORARY CONCRETE BARRIER FOR STAGE CONSTRUCTION
53.	SUPERSTRUCTURE
54.	PREFORMED JOINT STRIP SEAL
55.-56.	BEAM DETAILS
57.	STEEL RAILING, TYPE SM WITH CONCRETE WEARING SURFACE
58.	ABUTMENT CONCRETE REMOVAL
59.	ABUTMENT DETAILS
60.	PIER DETAILS
61.	ABUTMENT REPAIR DETAILS
62.	PIER REPAIR DETAILS
63.	BAR SPLICER ASSEMBLY DETAILS
EXISTING STRUCTURE PLANS SN 030-0018	
64.-70.	EXISTING STRUCTURE PLANS
CROSS SECTIONS SN 030-0018	
71.-73.	FAP RTE 782 (IL 1) CROSS SECTIONS

STATE OF ILLINOIS
DEPARTMENT OF TRANSPORTATION

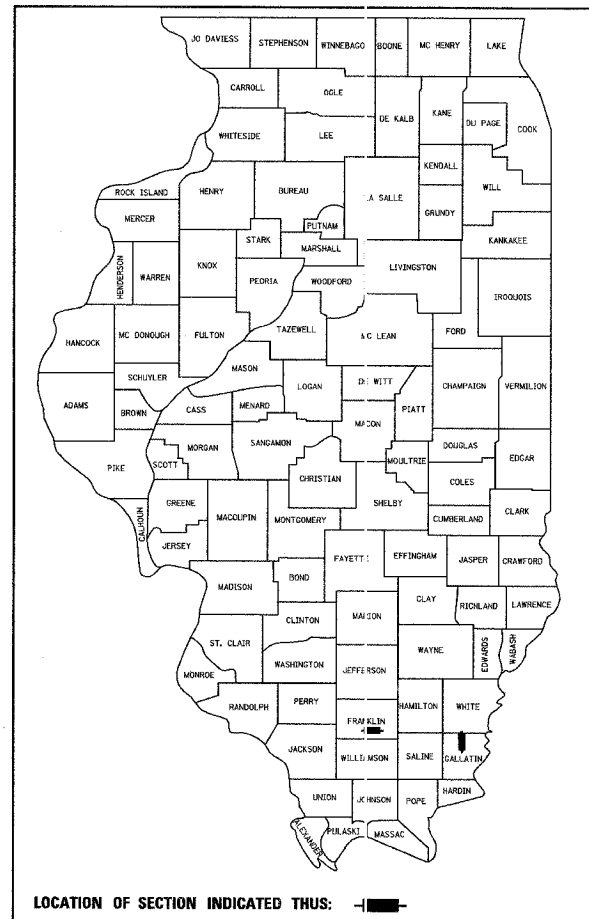
DIVISION OF HIGHWAYS

**PROPOSED
HIGHWAY PLANS**

FAP RTE'S 873 & 782 (IL 149 & IL 1)
SECTION 107BR-1 & 111BR-1
PROJECT: BHF-000S(595)
FRANKLIN & GALLATIN COUNTIES

C - 99 - 014 - 08

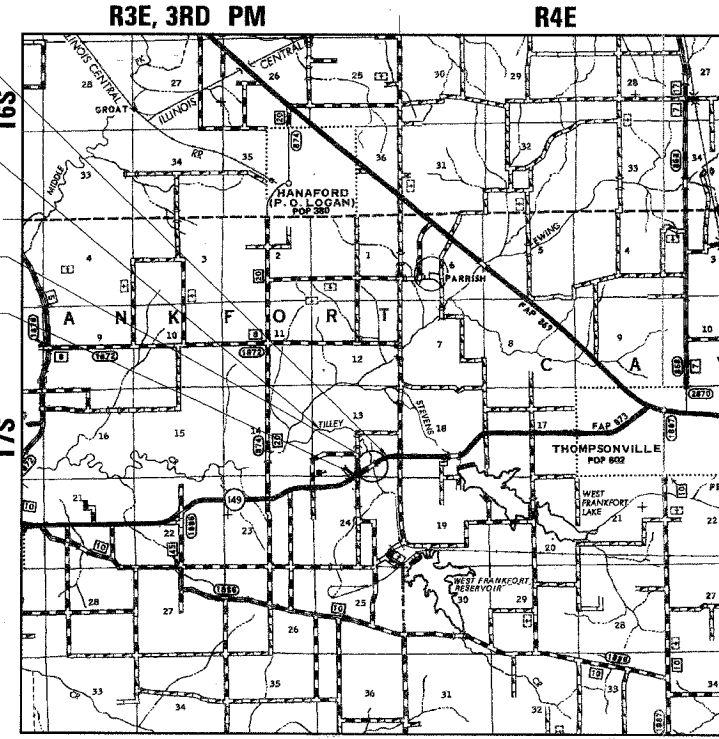
PPC DECK BEAM SUPERSTRUCTURE REPLACEMENTS
OVER TILLEY CREEK AND CANE CREEK



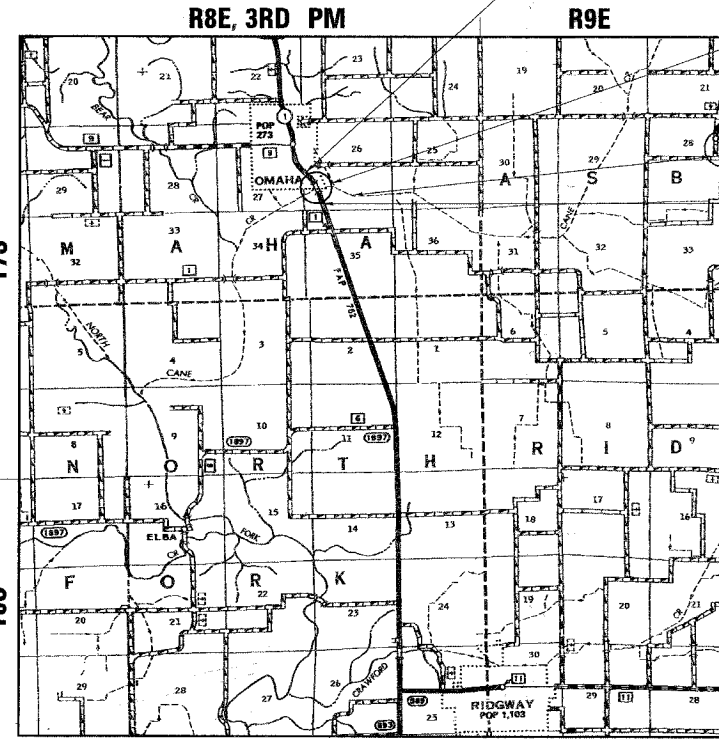
LOCATION OF SECTION INDICATED THUS: [Black Box]

FUNCTIONAL CLASSIFICATION: MINOR ARTERIAL (RURAL)

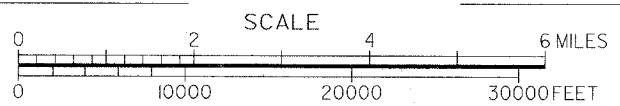
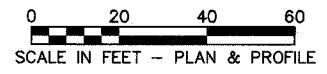
DESIGN SPEED:	55 mph
POSTED SPEED:	55 mph
ADT: (IL 149; IL 1)	1990; 1630 (2007)
PV: (IL 149; IL 1)	93%; 76%
SU: (IL 149; IL 1)	5%; 10%
MU: (IL 149; IL 1)	2%; 14%



FRANKLIN COUNTY LOCATION MAP



GALLATIN COUNTY LOCATION MAP



FULL SIZE PLANS HAVE BEEN PREPARED USING STANDARD ENGINEERING SCALES. REDUCED SIZED PLANS WILL NOT CONFORM TO STANDARD SCALES. IN MAKING MEASUREMENTS ON REDUCED PLANS, THE ABOVE SCALES MAY BE USED.

MICROFILMED _____
REEL NUMBER _____
AWARDED _____
RESIDENT ENGINEER _____
AS BUILT CHANGES WERE MADE ON THE FOLLOWING SHEETS _____

J.U.I.E.
JOINT UTILITY LOCATION INFORMATION FOR EXCAVATION
1-800-892-0123

DISTRICT 9 NO. (217) 549-2171
PROJECT ENGINEER: DAVID PICHE
UNIT CHIEF:
TOWNSHIP: FRANKFORT & OMAHA
CONTRACT NO.: 78034



THIS PROFESSIONAL ENGINEER'S SEAL APPLIES ONLY TO SHEETS 1-11 AND 28-40.
Richard D. Payne DATE: 04/18/08
ILLINOIS PROFESSIONAL LICENSE NO. 37421
(EXPIRATION DATE: 11-30-09)

ESCA CONSULTANTS, INC.

107BR-1 111BR-1
GROSS LENGTH = 295 FT. = 0.056 MI.; 409 FT. = 0.077 MI.
NET LENGTH = 295 FT. = 0.056 MI.; 409 FT. = 0.077 MI.



THIS PROFESSIONAL ENGINEER'S SEAL APPLIES ONLY TO SHEETS 41-49 AND 64-73.
Mary Coombe-Bloxdorf DATE: 04/18/08
ILLINOIS PROFESSIONAL LICENSE NO. 43208
(EXPIRATION DATE: 11-30-09)

COOMBE-BLOXDORF P.C.

**DESIGN
DESIGNATION
N.A.**

STATE OF ILLINOIS
DEPARTMENT OF TRANSPORTATION
DIVISION OF HIGHWAYS

SUBMITTED May 1, 2008
Max C. Lamm
DEPUTY DIRECTOR OF HIGHWAYS, REGION ENGINEER

June 27, 2008
Eric F. Haro
ENGINEER OF DESIGN AND ENVIRONMENT

June 27, 2008
Christine M. Reed
DIRECTOR OF HIGHWAYS, CHIEF ENGINEER

**PRINTED BY THE AUTHORITY
OF THE STATE OF ILLINOIS**