

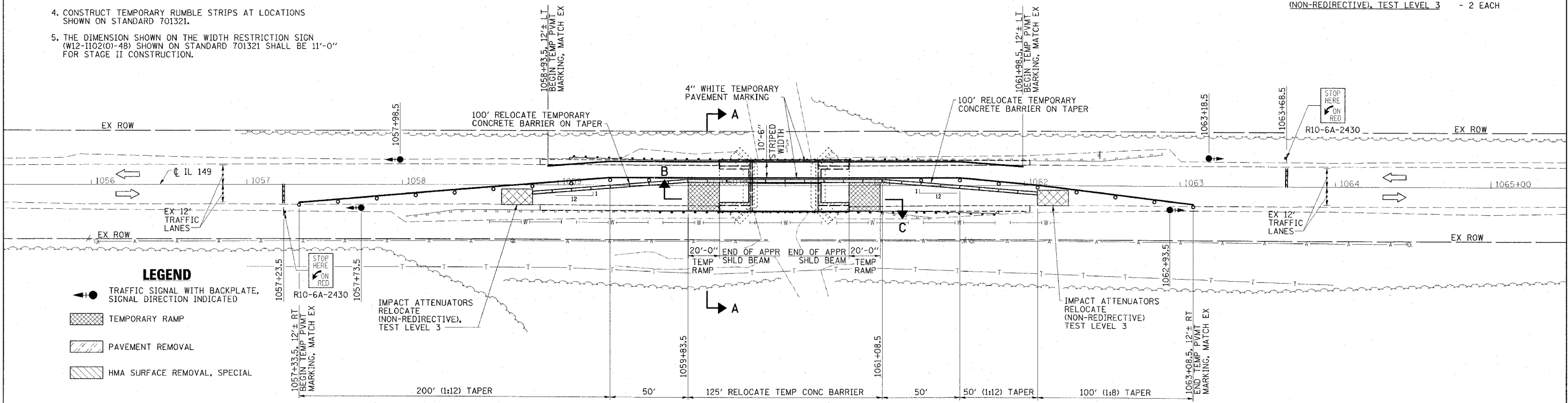
GENERAL NOTES

1. TRAFFIC CONTROL SHALL BE ERECTED AS SHOWN AND ACCORDING TO "TRAFFIC CONTROL AND PROTECTION, STANDARD 701321."
2. SEE SPECIAL PROVISIONS FOR ADDITIONAL TRAFFIC CONTROL REQUIREMENTS.
3. COORDINATE LOCATION OF SIGNALS WITH FINAL WORK AS DIRECTED BY THE ENGINEER.
4. CONSTRUCT TEMPORARY RUMBLE STRIPS AT LOCATIONS SHOWN ON STANDARD 701321.
5. THE DIMENSION SHOWN ON THE WIDTH RESTRICTION SIGN (W12-1102(O)-48) SHOWN ON STANDARD 701321 SHALL BE 11'-0" FOR STAGE II CONSTRUCTION.

CONTRACT NO. 78034				
FAP RTE	SECTION	COUNTY	TOTAL SHEETS	SHEET NO.
873	107BR-1	FRANKLIN	73	8
STA. 1056+00		TO STA. 1065+00		
FED. ROAD DIST. NO.	ILLINOIS	FED. AID PROJECT		

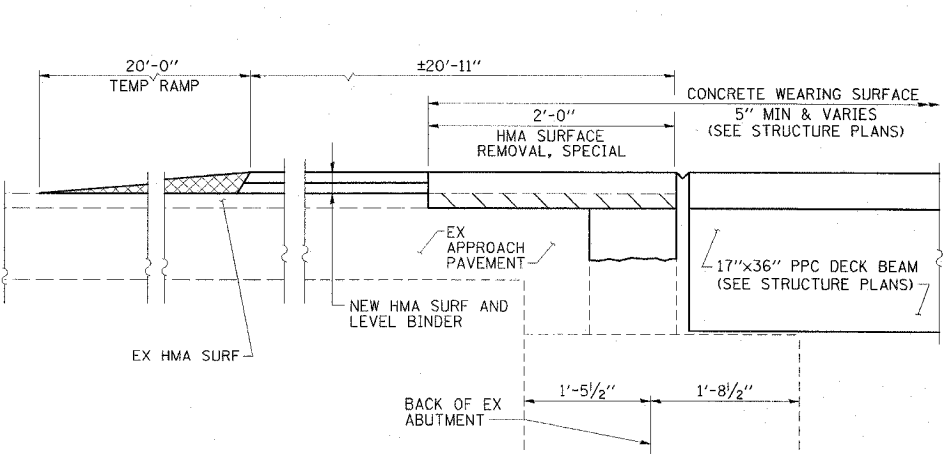
SCHEDULE OF QUANTITIES

RELOCATE TEMPORARY CONCRETE BARRIER			
STATION TO	STATION	FEET	
1058+83.5	1062+08.5	325	
		TOTAL	325
IMPACT ATTENUATORS, RELOCATE (NON-REDIRECTIVE), TEST LEVEL 3 - 2 EACH			

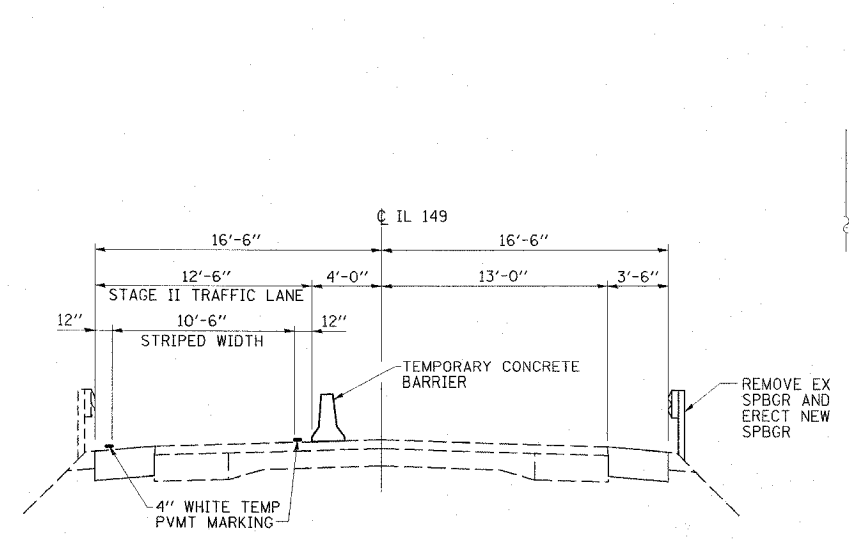


LEGEND

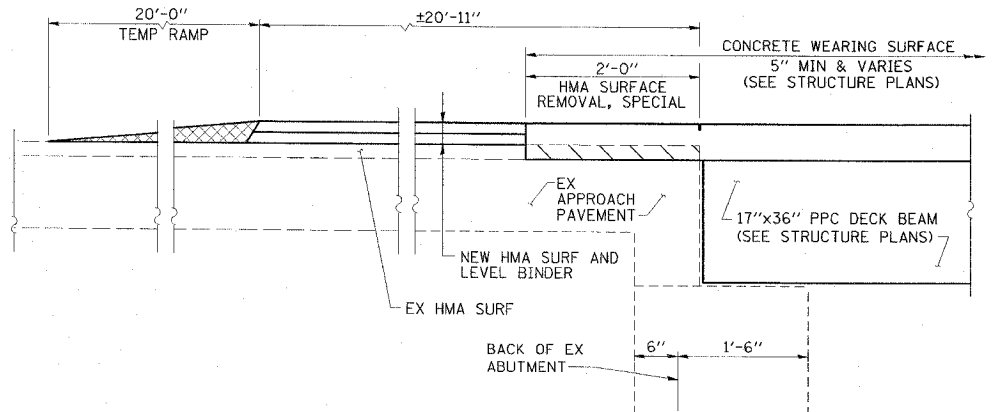
- TRAFFIC SIGNAL WITH BACKPLATE, SIGNAL DIRECTION INDICATED
- TEMPORARY RAMP
- PAVEMENT REMOVAL
- HMA SURFACE REMOVAL, SPECIAL



SECTION B



SECTION A-A



SECTION C

STAGE II CONSTRUCTION
FAP RTE 873 (IL 149)
SECTION 107BR-1
FRANKLIN COUNTY

ESCA CONSULTANTS, INC.

DESIGNED BY:	DAJ	02/08
DRAWN BY:	CJ/HAS	02/08
CHECKED BY:	MTD	03/08
APPROVED BY:	RDP	04/08

PLT DATE = #DATE#
 FILE NAME = #FILE#
 PLOT SCALE = #SCALE#
 REFERENCE = #REF#