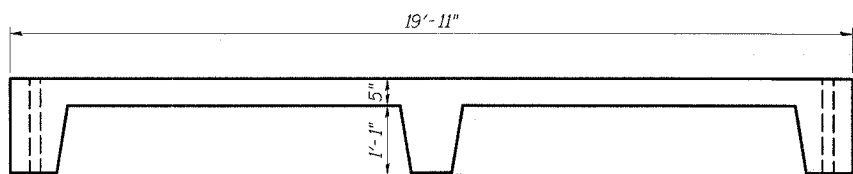


STATE OF ILLINOIS
DEPARTMENT OF TRANSPORTATION

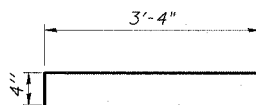
| | | | | |
|---------------------------------|---------|----------|------|-------|
| ROUTE NO. | SECTION | COUNTY | DATE | SHEET |
| FAP 873 | 107BR-1 | FRANKLIN | 73 | 19 |
| FED. ROAD DIST. NO. 1 | | | | |
| ILLINOIS FED. AID PROJECT - AID | | | | |

78034

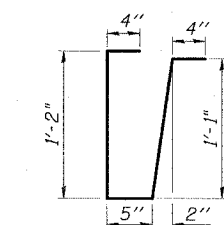
SHEET NO. 8
16 SHEETS



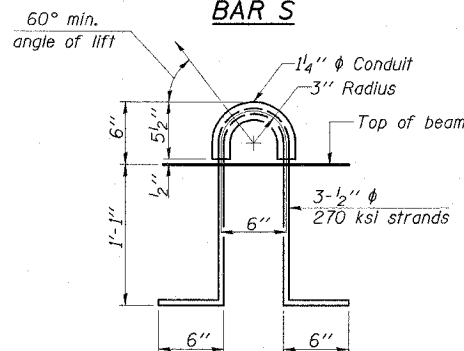
ELEVATION



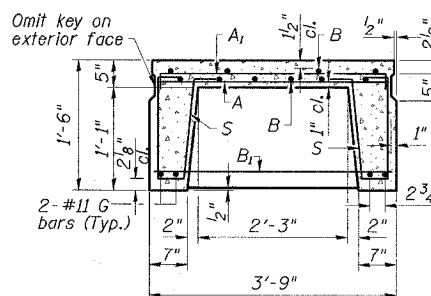
BAR A



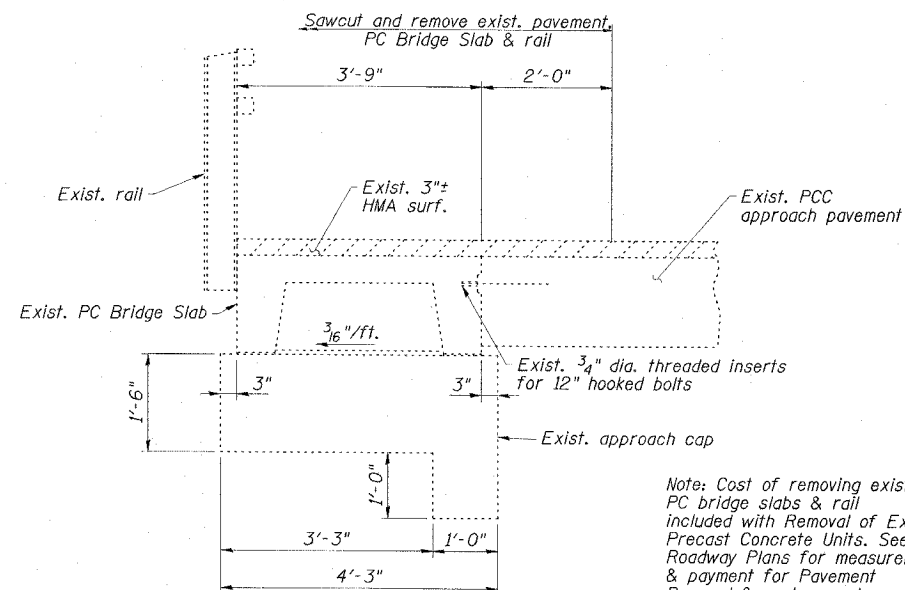
BAR S



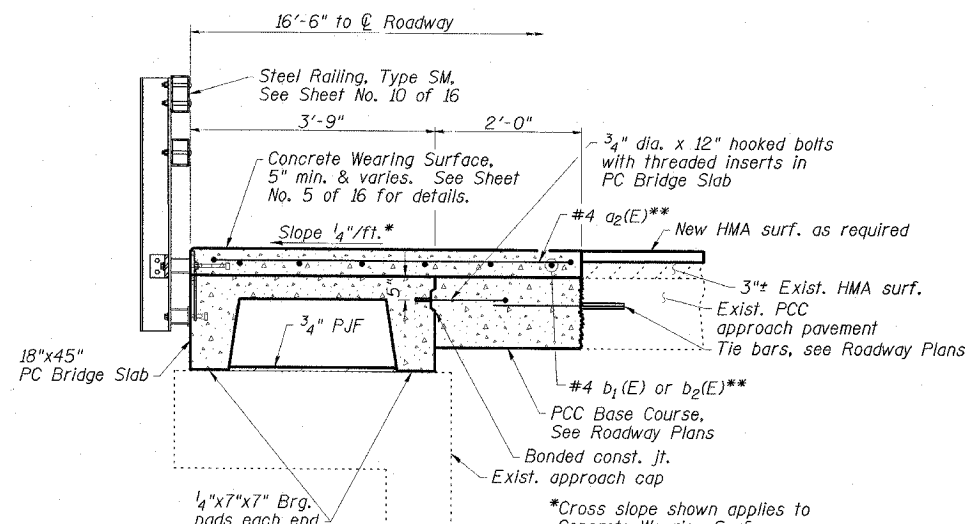
LIFTING LOOP DETAIL



SECTION THRU PRECAST UNIT

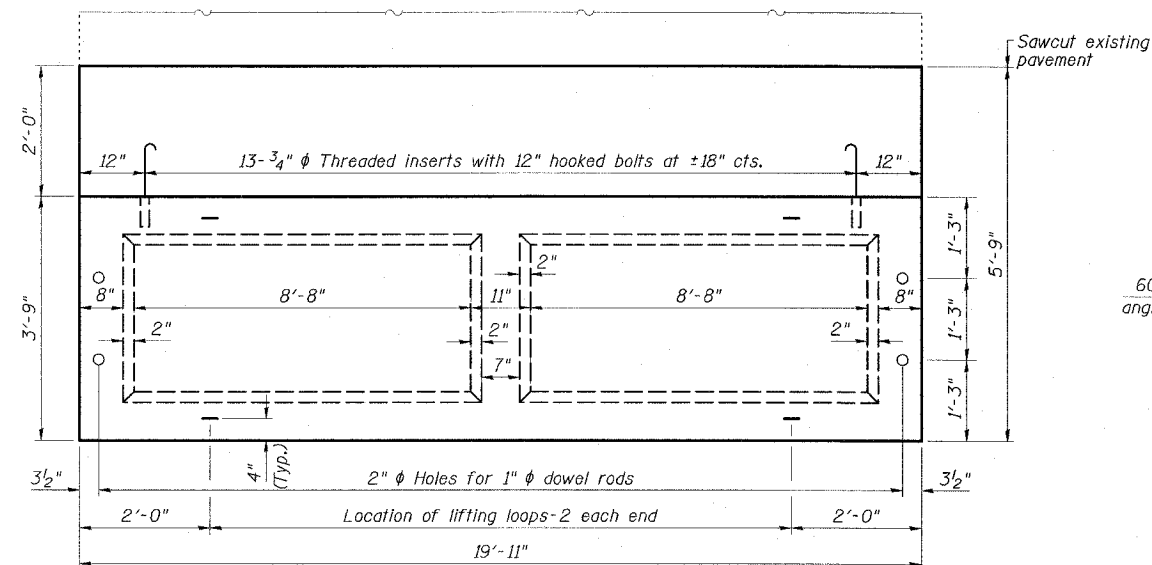


EXISTING CROSS SECTION



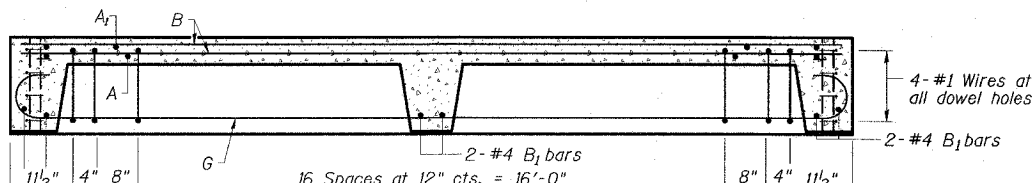
PROPOSED CROSS SECTION

Note: Cost of removing exist. PC bridge slabs & rail included with Removal of Exist. Precast Concrete Units. See Roadway Plans for measurement & payment for Pavement Removal & replacement.

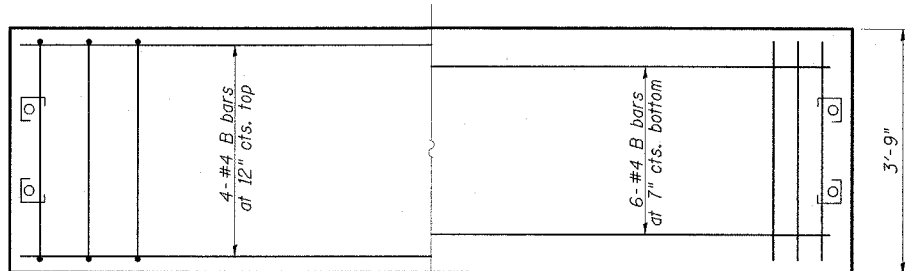


PARTIAL PLAN OF APPROACH

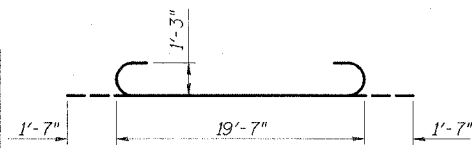
(CWS not shown)



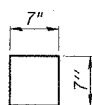
LONGITUDINAL SECTION



SLAB REINFORCEMENT



BAR G



FABRIC BEARING PAD

NOTES

Reinforcing steel shall conform to ASTM A 706 (IL MOD), Grade 60.
The bearing seat surfaces shall be adjusted by shimming to assure firm and even bearing. Two 1/8" fabric adjusting shims of the dimensions of the bearing pad shall be provided for each bearing.
Keyway surfaces shall be cleaned to remove form oil or other bond breaking material prior to shipment of the slabs. Cleaning shall be done by sandblasting the keyway areas between top of the slab and the bottom edge of the key.
Corrosion inhibitor, per Article 1020.05(b)(12) of the Standard Specifications, shall be used in the concrete for precast concrete bridge slabs.
Required strength, f'c, shall be 4500 p.s.i.
See Sheet No. 2 of 16 for location of rail anchors and additional notes.
Cost of reinforcement and accessories cast into the slab unit, bearing pads, furnishing, drilling for, placing and grouting anchor rods and 3/4" diameter hooked bolts is included in contract unit price for Precast Concrete Bridge Slab.
The Precast Concrete Bridge Slab shall be erected and aligned with the exterior face of the exterior deck beam after deck beams are in final position.

BILL OF MATERIAL

| Item | Unit | Quantity |
|------------------------------|---------|----------|
| Precast Concrete Bridge Slab | Sq. Ft. | 299 |

APPROACH DETAILS
IL 149 OVER TILLEY CREEK
FAP ROUTE 873 - SECTION 107BR-1
FRANKLIN COUNTY
STATION 1060+46.00
STRUCTURE NO. 028-0040

ESCA
CONSULTANTS, INC.

| | | |
|--------------|-----|-------|
| DESIGNED BY: | ELH | 02/08 |
| DRAWN BY: | HAS | 02/08 |
| CHECKED BY: | JMS | 04/08 |
| APPROVED BY: | RDP | 04/08 |