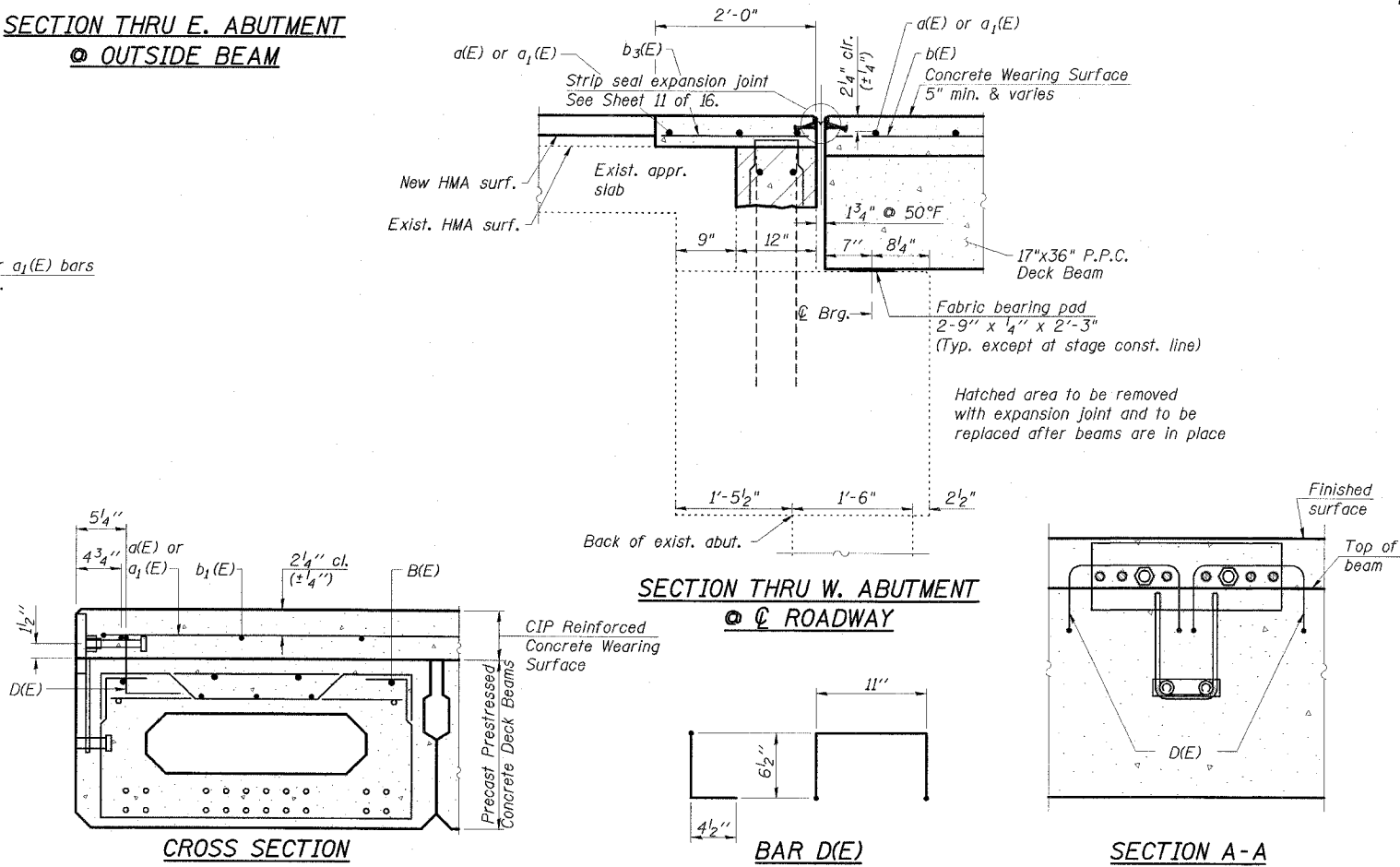
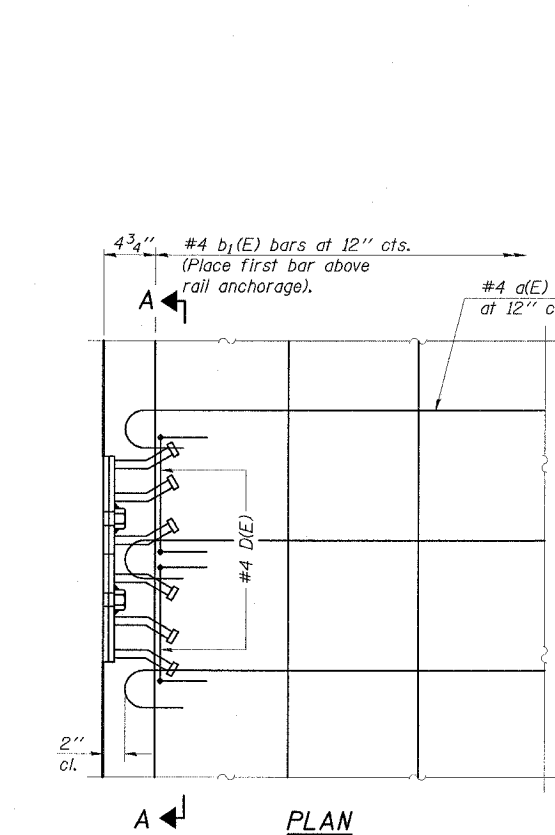
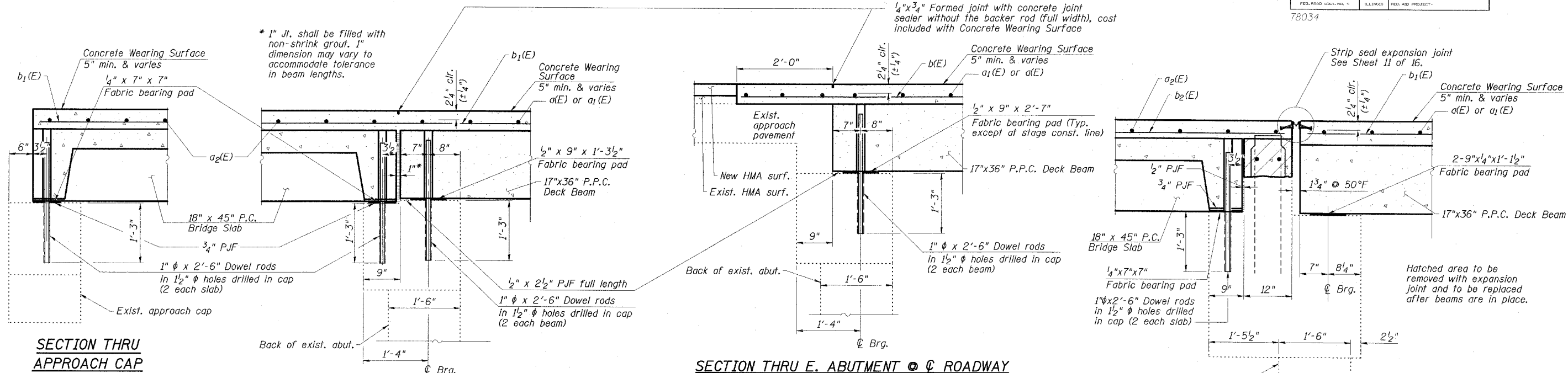


STATE OF ILLINOIS
DEPARTMENT OF TRANSPORTATION

ROUTE NO.	SECTION	LOCALITY	SHEET NO.	SHEET	SHEET NO.
FAP 873	107BR-1	FRANKLIN	73	20	16 SHEETS
FED. ROAD DIST. NO. 5		ILLINOIS	FED. AID PROJECT		

78034



NOTES

- After beams have been erected, holes shall be drilled into substructure and dowels rods placed. Dowel holes shall be filled with non-shrink grout to top of beam and allowed to cure min. 24 hrs. prior to grouting the shear keys.
- Concrete Wearing Surface to be poured after grouting the shear keys.
- Dowel rods drilled in cap are included in the cost of Precast Prestressed Concrete Deck Beams (17" Depth) or Precast Concrete Bridge Slabs.
- The rail anchorage shall be cast with the beam or slab and the wearing surface shall be cast in the field. Formwork necessary for the wearing surface may be secured utilizing the bottom rail anchorage inserts and/or additional inserts cast into the beam or slab. Drilling into the beam or slab will not be permitted.
- Anchor bolts shall be ASTM F1554 all-thread (or an Engineer-approved alternate material) of the grade(s) and diameter(s) specified. ASTM A307 Grade C anchor bolts may be used in lieu of ASTM F1554 Grade 36 (F_y=36ksi). The corresponding specified grade of AASHTO M314 anchor bolts may be used in lieu of ASTM F1554.
- Drilled and set anchor bolts shall be installed according to Article 521.06 of the Standard Specifications.

SUPERSTRUCTURE AND APPROACH DETAILS
IL 149 OVER TILLEY CREEK
FAP ROUTE 873 - SECTION 107BR-1
FRANKLIN COUNTY
STATION 1060+46.00
STRUCTURE NO. 028-0040

ESCA
CONSULTANTS, INC.

DESIGNED BY:	ELH	02/08
DRAWN BY:	HAS	02/08
CHECKED BY:	JMS	02/08
APPROVED BY:	RDP	02/08

CONCRETE OVERLAY DETAILS AT RAIL ANCHORAGE
 (Bridge shown; approach similar)