

STATE OF ILLINOIS
DEPARTMENT OF TRANSPORTATION

ROUTE NO.	SECTION	COUNTY	MILE	POST	SHEET NO. 12 16 SHEETS
FAP 873	107BR-1	FRANKLIN	73	23	
FED. ROAD DIST. NO. 4		FED. AID PROJECT - AID			

78034

**WEST ABUTMENT
BILL OF MATERIAL**

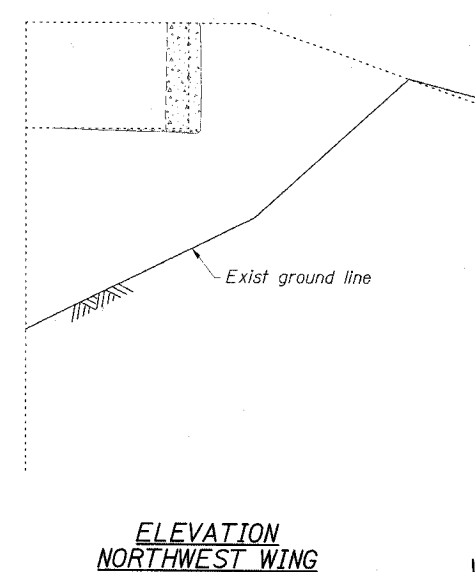
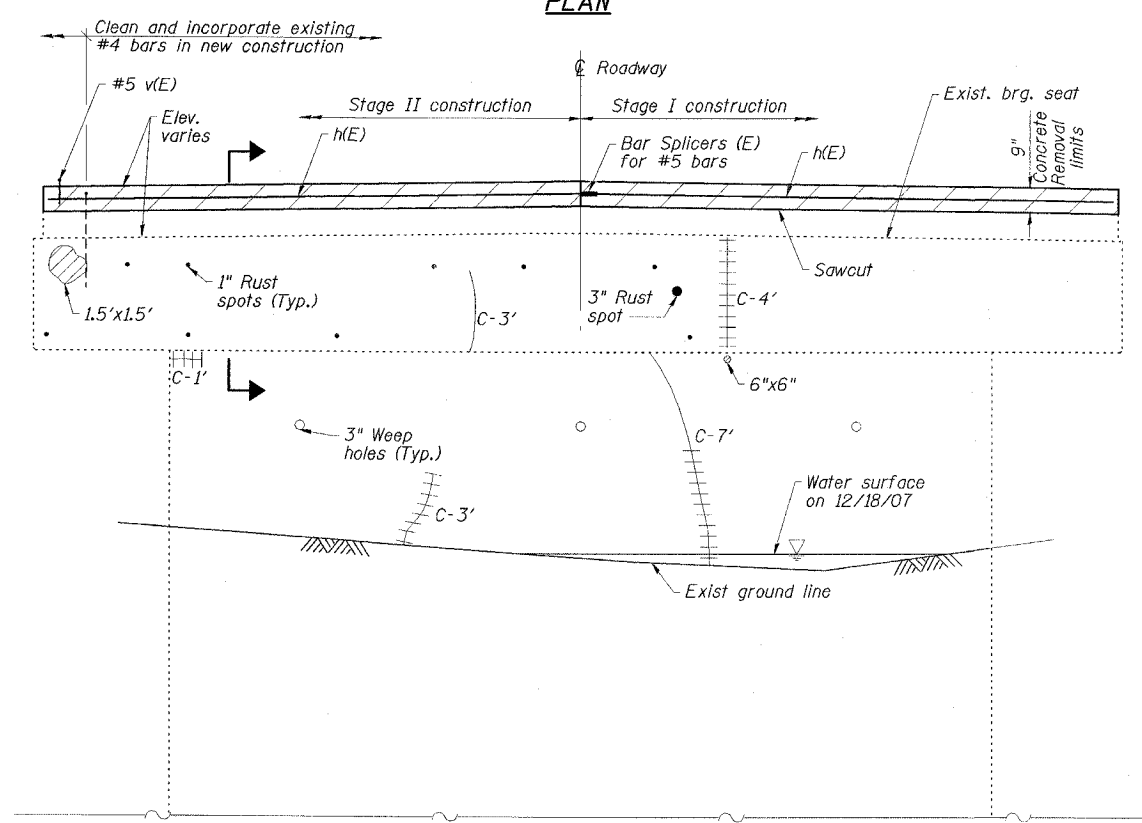
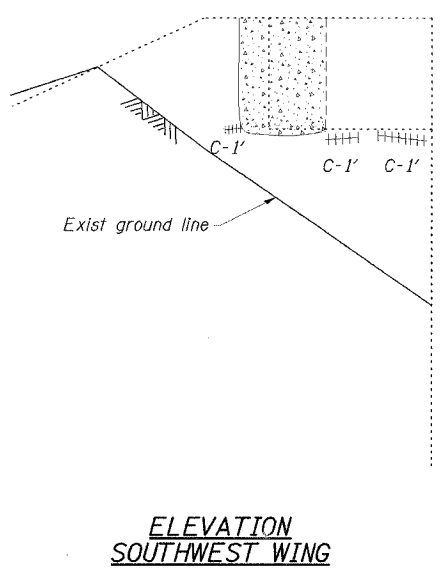
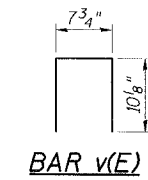
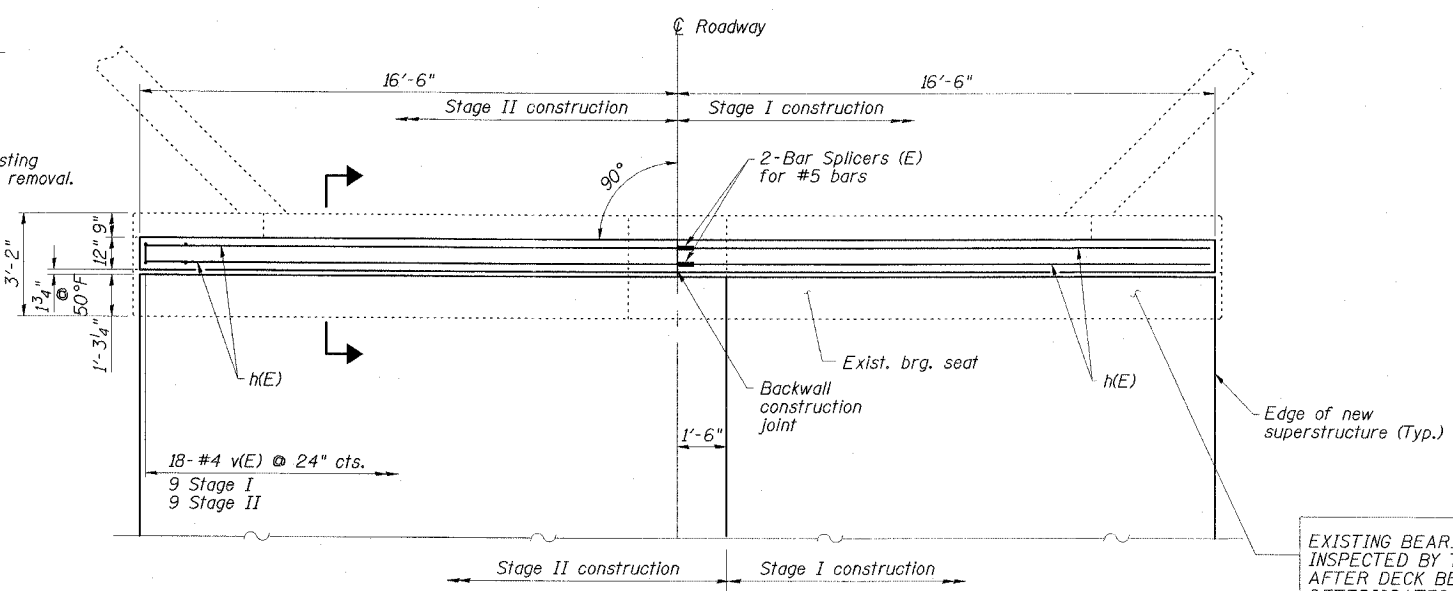
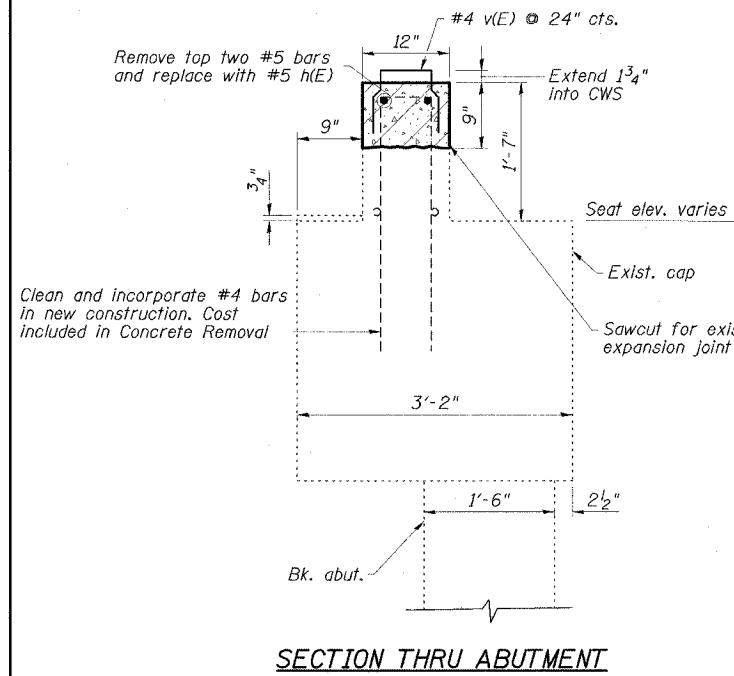
Bar	No.	Size	Length	Shape
h(E)	4	#5	16'-4"	
v(E)	18	#4	2'-4"	□
Concrete Sealer		Sq. Ft.	42	
Epoxy Crack Injection		Foot	41	
Structural Repair of Concrete (Depth Equal to or Less Than 5")		Sq. Ft.	18	
Concrete Removal		Cu. Yd.	1.0	
Concrete Structures		Cu. Yd.	1.0	
Reinforcement Bars, Epoxy Coated		Pound	100	
Asbestos Bearing Pad Removal		Each	30	
Bar Splicers		Each	2	

REPAIR LEGEND

Inspection Date: 12/18/07

- C-6' Crack to be epoxy injected
- Delaminated or spalled area - use Structural Repair of Concrete
- Patched area
- C-6' Efflorescent crack to be epoxy injected
- Rust spot

EXISTING BEARING SEAT TO BE INSPECTED BY THE ENGINEER AFTER DECK BEAM REMOVAL. DETERIORATED CONCRETE AREAS SHALL BE REPAIRED (ESTIMATED 15 S.F. STRUCTURAL REPAIR OF CONCRETE DEPTH < 5") AND CRACKS SHALL BE SEALED (ESTIMATED 20' EPOXY CRACK INJECTION) IF FOUND. CONCRETE SEALER SHALL BE APPLIED TO CONCRETE REPAIR AREAS.



NOTE: ABUTMENT CRACK REPAIR LENGTHS AND STRUCTURAL REPAIR OF CONCRETE AREAS ARE ESTIMATED FROM 12-18-07 SURVEY WORK. ACTUAL LOCATIONS AND QUANTITIES OF REPAIRS SHALL BE SHOWN BY THE ENGINEER ON THE AS-BUILT PLANS FOR THIS SECTION.

ESCA
CONSULTANTS, INC.

DESIGNED BY:	ELH	02/08
DRAWN BY:	JPC/HAS	02/08
CHECKED BY:	JMS	02/08
APPROVED BY:	RDP	02/08

**WEST ABUTMENT
IL 149 OVER TILLEY CREEK
FAP ROUTE 873 - SECTION 107BR-1
FRANKLIN COUNTY
STATION 1060+46.00
STRUCTURE NO. 028-0040**