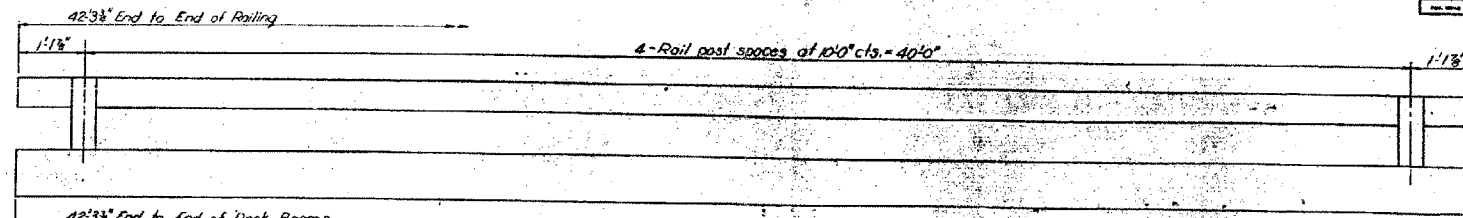
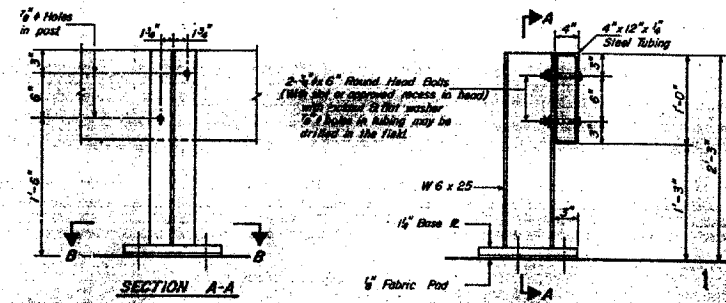


STATE OF ILLINOIS
DEPARTMENT OF TRANSPORTATION

PROJECT NO.	SECTION	COUNTY	SHEET NO.
873	107BR-1	FRANKLIN	20 14
SHEET NO. 3			

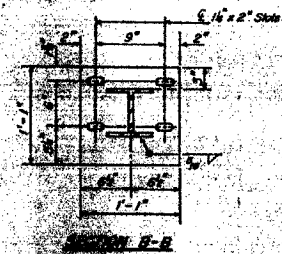


ELEVATION

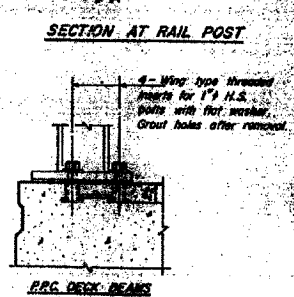


SECTION A-A

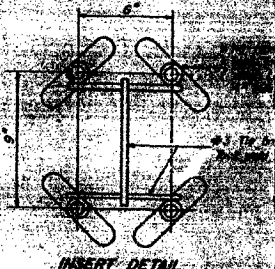
SECTION AT RAIL POST



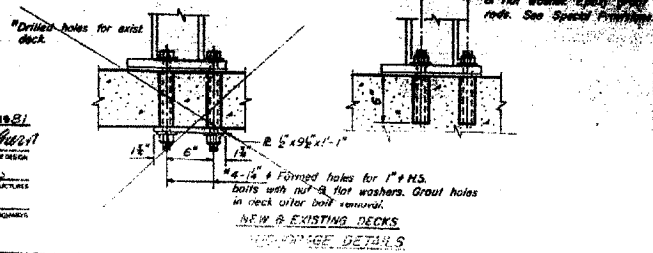
SECTION B-B



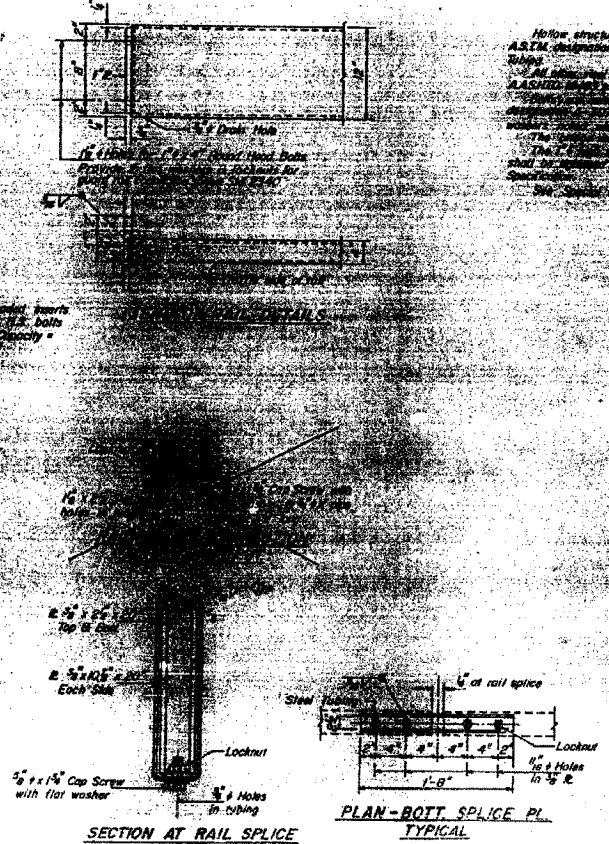
R.R.C. DECK BEAMS



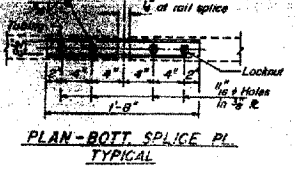
INSERT DETAIL



NEW & EXISTING DECKS
RIP-RAP DETAIL



SECTION AT RAIL SPLICE



PLAN - BOTTL SPLICE PL.
TYPICAL

NOTES
Hollow structural steel tubing shall conform to the requirements of AISC Specification for Structural Steel Tubing.
All structural members and plates shall conform to the requirements of AISC Specification for Structural Steel. All steel shall conform to AISC Specification for Structural Steel. All steel shall conform to AISC Specification for Structural Steel. All steel shall conform to AISC Specification for Structural Steel. All steel shall conform to AISC Specification for Structural Steel.

BILL OF MATERIALS
See Special Provisions

TEMPORARY BRIDGE
FA RT 873 SEC. 107B-1
FRANKLIN COUNTY
STA 1050+45.00

DESIGNED BY: M. BLODORF
CHECKED BY: JIM KOHLST
DRAWN BY: R. DOTY
CHECKED BY: J. K.
December 15, 1981
EXAMINED BY: James J. Hylton
APPROVED BY: [Signature]
R-25 9-30-80 (10'-9" Maximum Post Spacing)