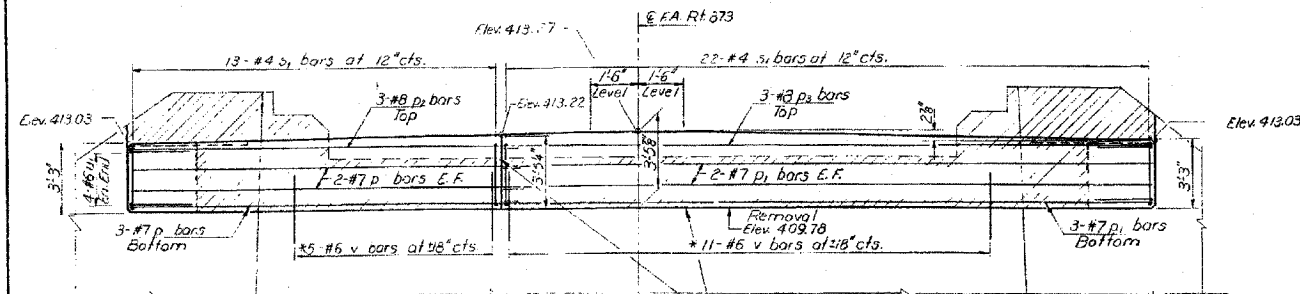


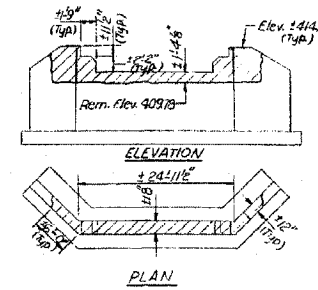
STATE OF ILLINOIS
DEPARTMENT OF TRANSPORTATION

| | | | | |
|---------------|----------|-----|----------|---------------|
| DATE OF SHEET | REVISION | BY | DATE | NO. OF SHEETS |
| 10/18/08 | 1 | DAJ | 10/18/08 | 9 |
| 11/13/08 | 2 | DAJ | 11/13/08 | 9 |

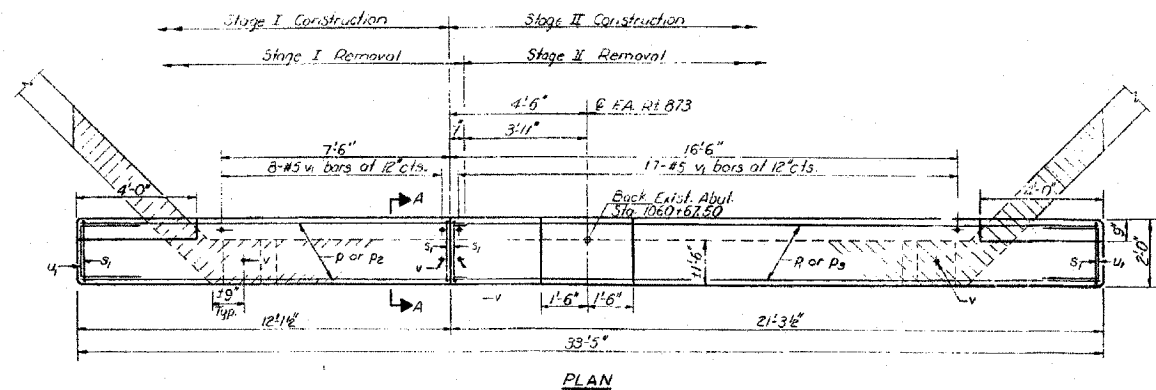
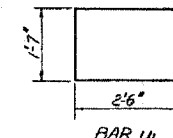
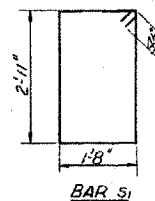


ELEVATION (LOOKING EAST)
Bridged Construction Jts. in accordance with Article 50413 (a)(2) of the Standard Specifications.

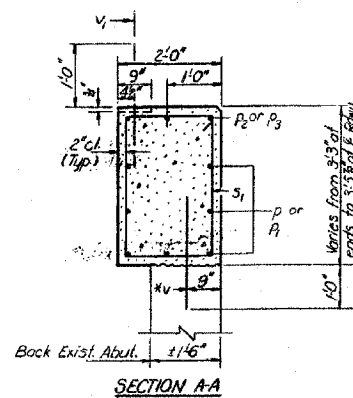
*Drill 1/2" x 10" hole. Epoxy grout bars. See Special Provisions for epoxy grout.



CONCRETE REMOVAL DETAILS



PLAN



SECTION A-A

BILL OF MATERIAL

| Bar | No. | Size | Length | Stops |
|---------------------------|-----|------|--------|-------|
| D | 7 | #7 | 12.6' | |
| D1 | 7 | #7 | 21.1' | |
| P1 | 3 | #8 | 12.6' | |
| P2 | 3 | #8 | 21.1' | |
| S1 | 35 | #4 | 911" | 14 |
| U1 | 8 | #5 | 67" | 1 |
| V | 16 | #6 | 2.6' | |
| V1 | 25 | #5 | 2.6' | |
| Concrete Removal | | | | CUWT |
| Class 2 Concrete | | | | CUWT |
| Reinforcement Bars Poured | | | | 1130 |

EAST ABUTMENT
E.A. RT. 873 SEC. 107B DR
FRANKLIN COUNTY
STA. 1060+46.00

| | |
|------------------|-------------------------|
| DESIGNED BY: DAJ | DATE: December 15, 2008 |
| CHECKED BY: MTD | DATE: 12/15/08 |
| DRAWN BY: HAS | DATE: 12/15/08 |
| CHECKED BY: RDP | DATE: 04/08 |

NOTES:
Hatched area indicates Concrete Removal. Reinforcement bars in hatched area shall be removed and re-embedded in new concrete.