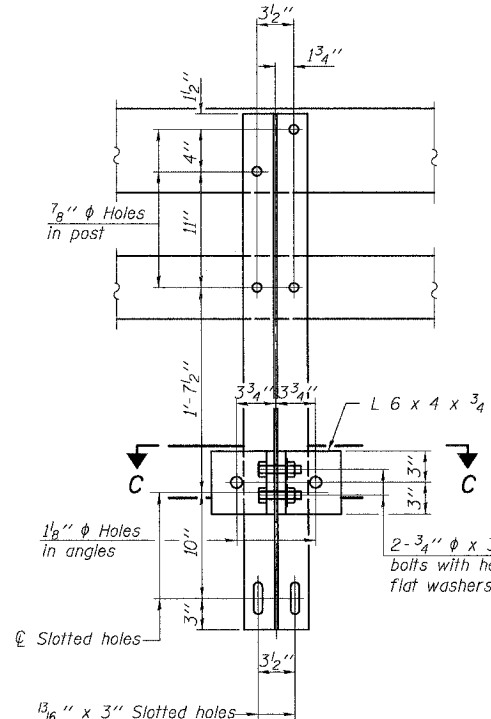
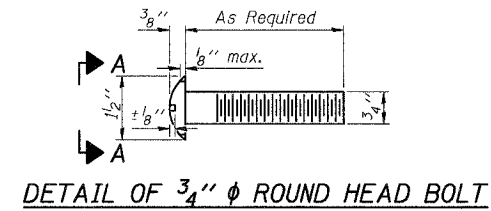


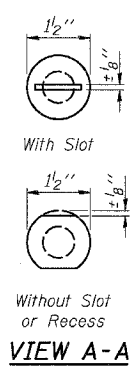
ROUTE NO.	SECTION	COUNTY	SHEETS	SHEET NO.	SHEET NO. 8 14 SHEETS
FA 782	111BR-1	GALLATIN	73	57	
FED. ROAD DIST. NO. 7					

Contract #78034



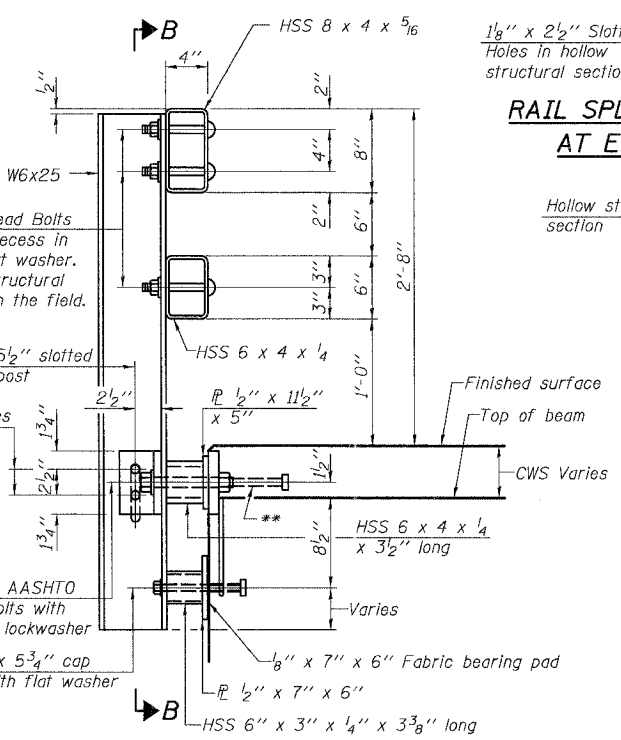
SECTION B-B

SECTION C-C

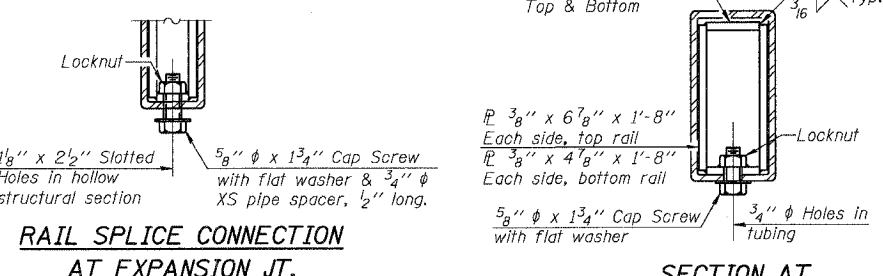


VIEW A-A

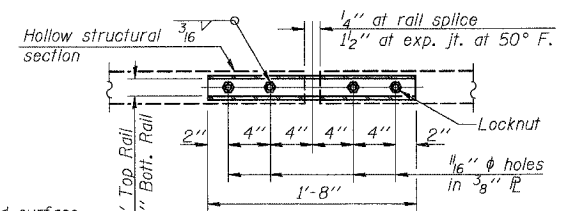
4-3/4"  $\phi$  x 6" Round Head Bolts (With slot or approved recess in head) with locknut & flat washer. 7/8"  $\phi$  holes in hollow structural section may be drilled in the field.



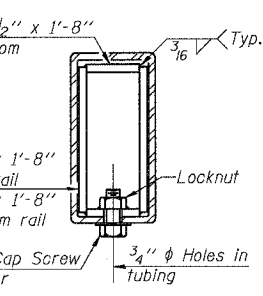
SECTION AT RAIL POST



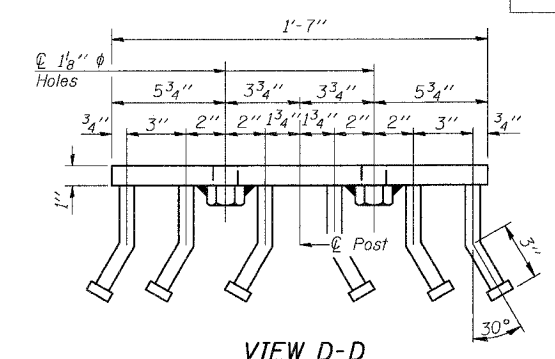
RAIL SPLICE CONNECTION AT EXPANSION JT.



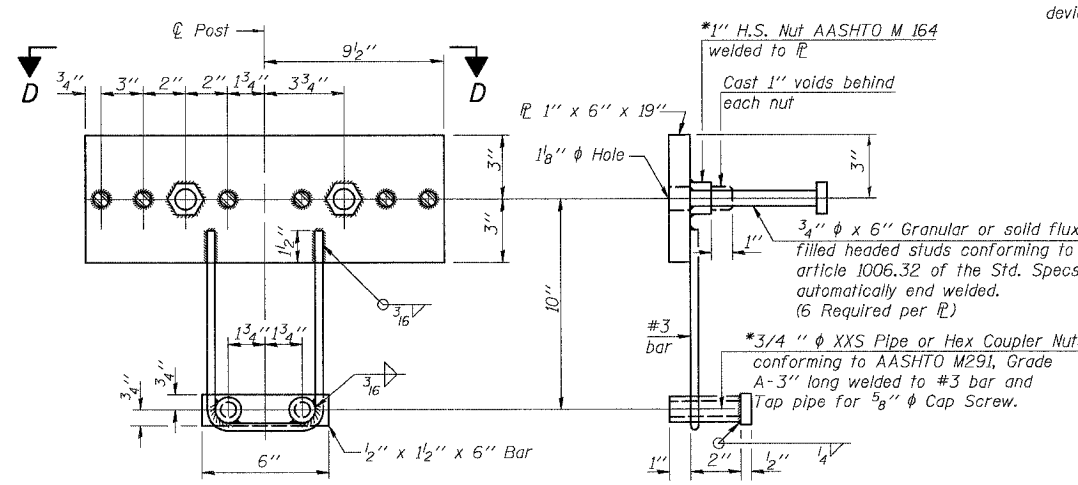
PLAN-BOTT. SPLICE P TYPICAL



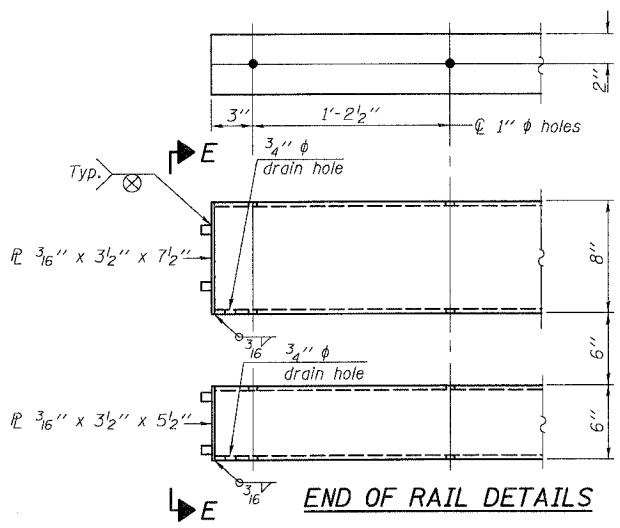
SECTION AT RAIL SPLICE



VIEW D-D



ANCHOR DEVICE



END OF RAIL DETAILS

Notes:  
 All field drilled holes shall be coated with an approved zinc rich paint before erection.  
 For multi-span bridges, sufficient 1/4" x 6" x 1'-2" galvanized steel shims shall be provided to align rail between adjacent spans. Cost included with Steel Railing, Type SM.  
 Steel rail elements shall be galvanized according to Article 509.05 of the Standard Specifications.  
 \*\*The studs of the anchor devices shall be placed below the top reinforcement bars and the outermost longitudinal reinforcement bar shall be placed directly above the studs of the rail post anchor device.

BILL OF MATERIAL

Item	Unit	Quantity
Steel Railing, Type SM	Foot	316

STEEL RAILING, TYPE SM WITH CONCRETE WEARING SURFACE  
 F.A. RT. 782 SECTION 111BR-1  
 GALLATIN COUNTY  
 STATION 355+95.00  
 STRUCTURE NO. 030-0018

PROJECT NO.	07056-4
DATE	4/17/08
DRAWN BY	TFG
CHECKED BY	GB/BD/MCB

COOMBE-BLOXDORF P.C.  
 Engineers / Land Surveyors  
 Springfield, Illinois  
 Design Firm License No. 184-002703

PLOT DATE = 04/17/2008  
 FILE NAME = \\srb\p1\project\08-r-34CWS.dgn  
 USER NAME = BFLZ  
 USER NAME = BFLZ

R-34CWS 9-3-07

(6'-3" Maximum Post Spacing) (5" minimum to 7/8" maximum CWS thickness)

\*Threaded areas shall be plugged or blocked off during casting of beam. Galvanized after fabrication.