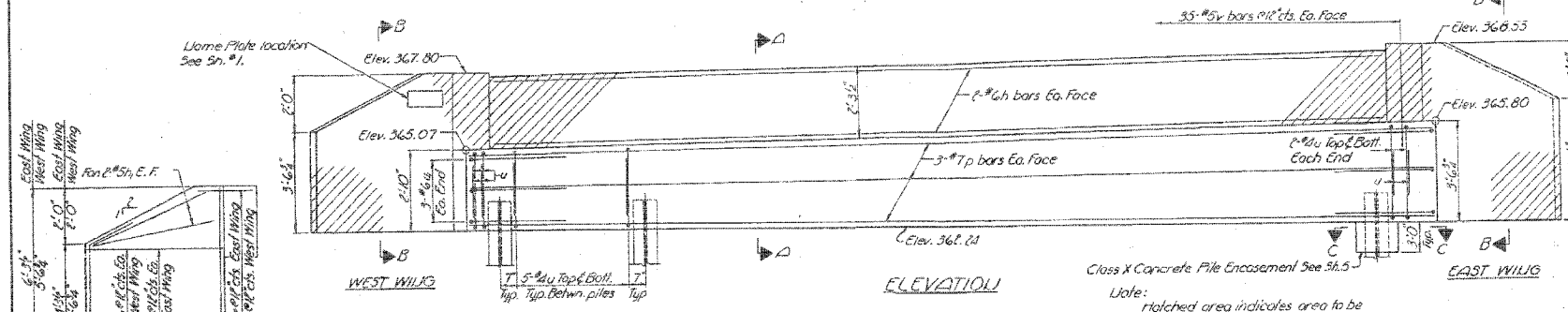


Contract #78034

Note:
All edges shall have Std. 1/4 chamfers except as noted.

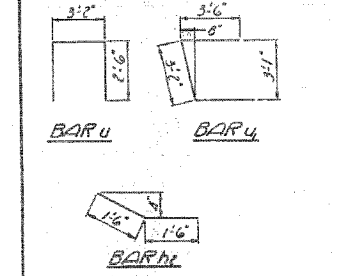
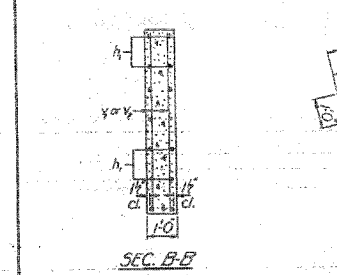
STATE OF ILLINOIS
DEPARTMENT OF TRANSPORTATION

PROJECT NO.	DESIGN SHEETS	SHEET NO.	SHEETS
111 (W.P.S.)-1, 111B-1	73	50	8

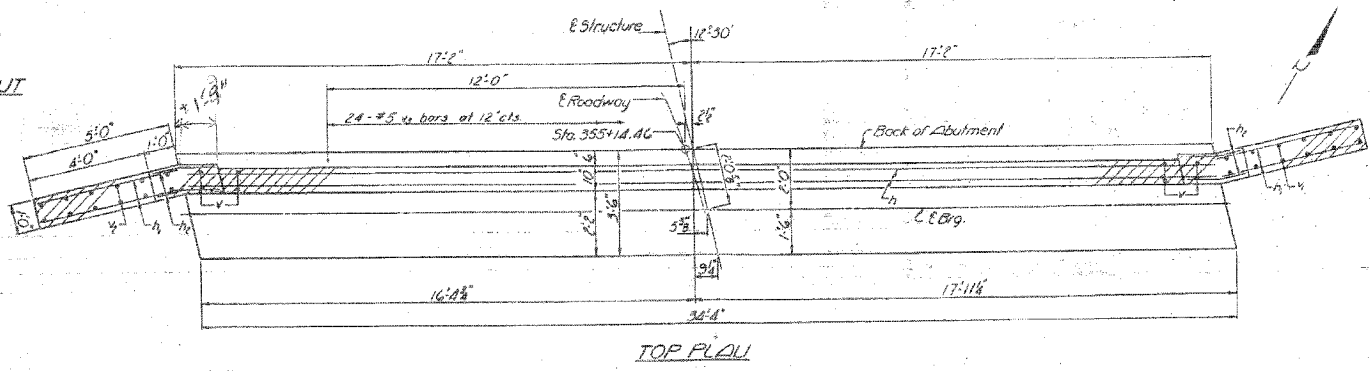


PILE DATA
Type: Steel HPI O&P
Capacity: Drive to refusal
Est. Length: 79'
No. Required: 7

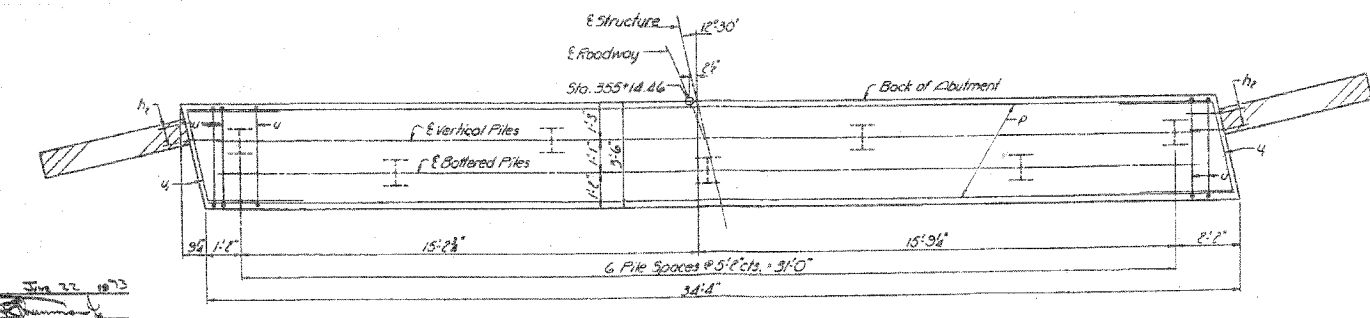
WING WALL REINFORCEMENT



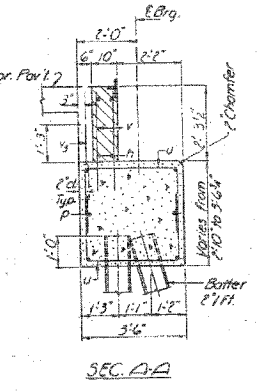
DESIGNED	J. M. Patel	EXAMINED	Jim Z. 10/23
CHECKED	J. M. Patel	PASSED	[Signature]
DRAWN	J.D.	DATE	10/23
CHECKED	J. M. Patel	BY	[Signature]



TOP PLAN



PLAN PILE CAP



BILL OF MATERIAL

Bar	Lt.	Size	Length	Shape
n	8	#6	34'-0"	—
h	26	#5	4'-9"	—
h	26	#5	7'-6"	—
d	6	#7	34'-0"	—
u	68	#4	8'-7"	□
u	6	#6	40'-8"	—
v	70	#5	3'-6"	—
v	18	#5	5'-10"	—
w	18	#5	5'-11"	—
w	24	#5	2'-5"	—
Class II Concrete				
Reinforcement Bars				
Steel Piles HPI O&P				
Llame Plates				

NORTH ABUTMENT
F.A. RTE. 782 SEC. 111B-1
GALLATIN COUNTY
STA. 355+95.00

EXISTING STRUCTURE PLANS
F.A. RTE. 782 SECTION 111B-1
GALLATIN COUNTY
STATION 355+95.00
STRUCTURE NO. 030-0018

COOMBE-BLOXDORF P.C.
Engineers / Land Surveyors
Springfield, Illinois
Design Firm License No. 184-002703

PROJECT NO.	07056-4
SCALE	
DATE	/ /
DRAWN BY	
CHECKED BY	

PLOT DATE = 04/17/2008
 PLOT SCALE = 0.10000 1" = 10'
 USER NAME = CFC