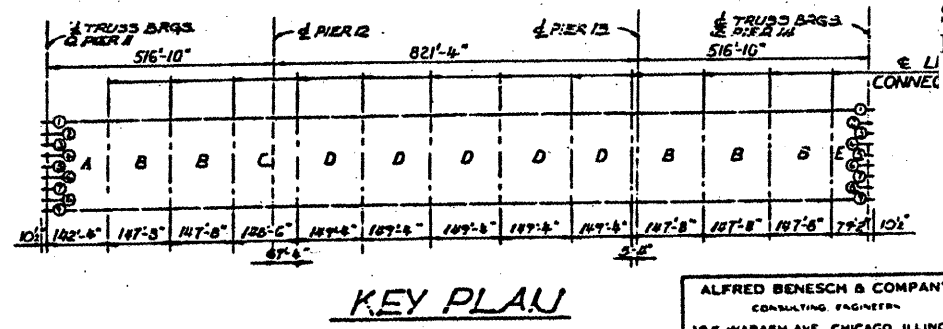
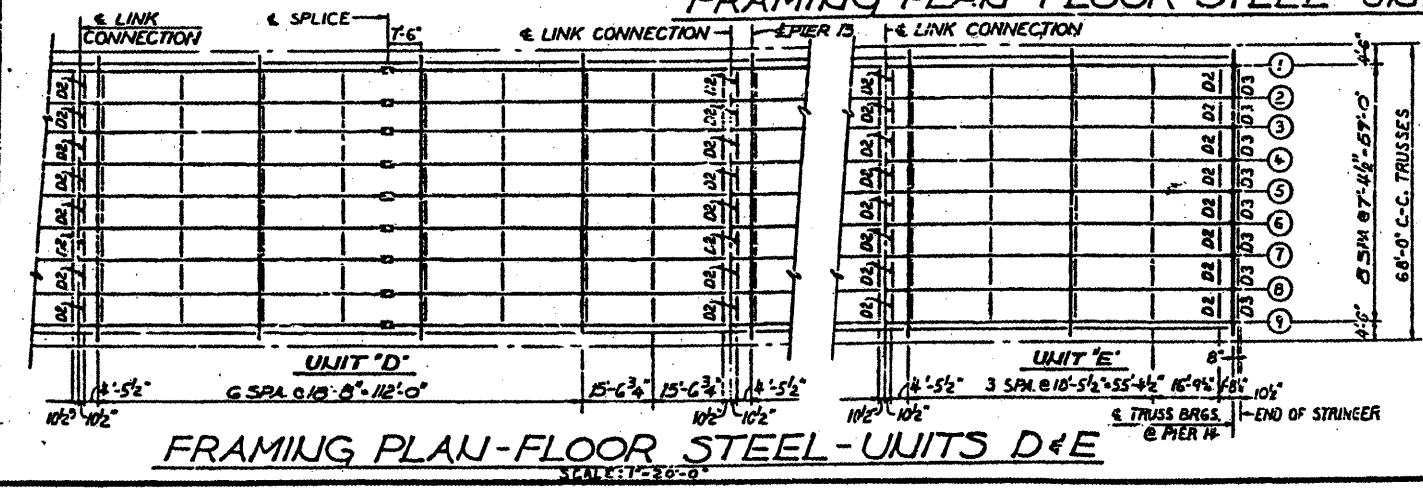
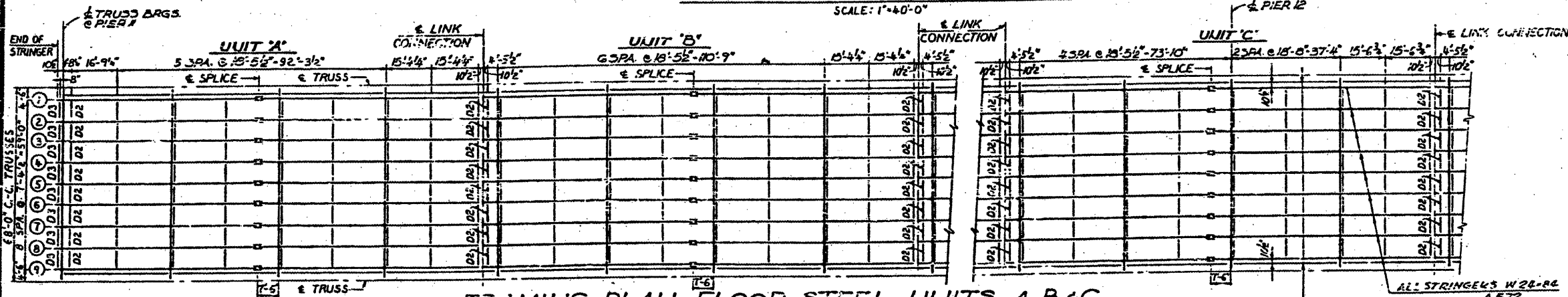
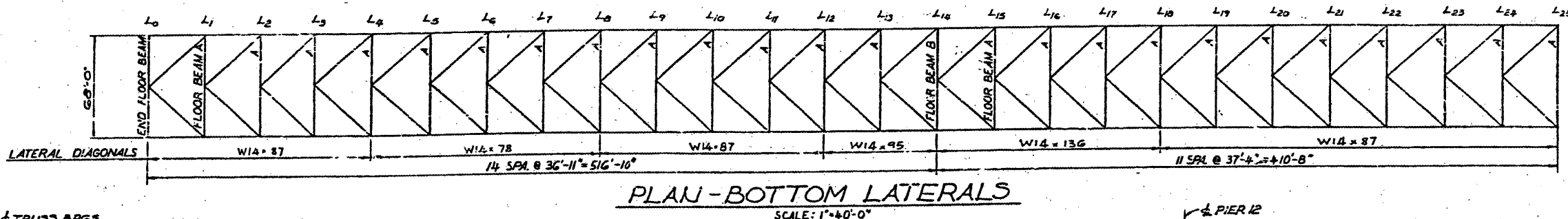
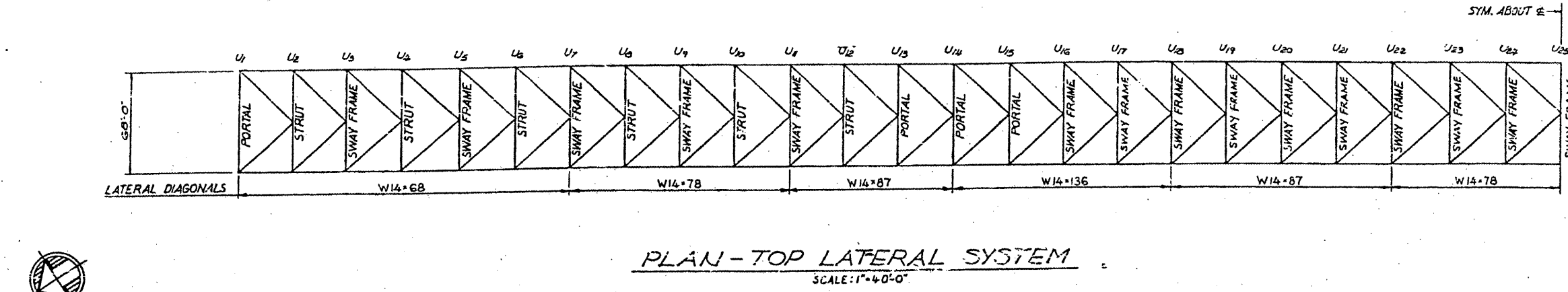


CONTRACT: 78040
 ROUTE: F.A.I. 57
 SECTION: (02-1B-1)P-1
 COUNTY: ALEXANDER, IL; MISSISSIPPI, MO
 SHEET 23 OF 67
 FOR INFORMATION ONLY



NOTES:
 ALL DIAPHRAGMS ARE DI UNLESS NOTED.
 ALL MATERIAL ASTM A36 UNLESS NOTED.
 ALL DIMENSIONS PERPENDICULAR TO TRUSS ARE HORIZONTAL.

BRIDGE NO. 1
 STRUCTURE NO. 002-0022
 FOR INFORMATION ONLY

FRAMING PLAN - SPANS 12, 13 & 14
 F. A. I. RTE. 57 OVER THE MISSISSIPPI RIVER
 PROJECT 1-57-9(5)10
 SECTION 102-1B-1(D)
 ALEXANDER COUNTY, ILLINOIS
 MISSISSIPPI COUNTY, MISSOURI
 STA. 1141 + 84.75 TO STA. 1182 + 75.25

ALFRED BENESCH & COMPANY
 CONSULTING ENGINEERS
 10 S. WABASH AVE. CHICAGO, ILLINOIS