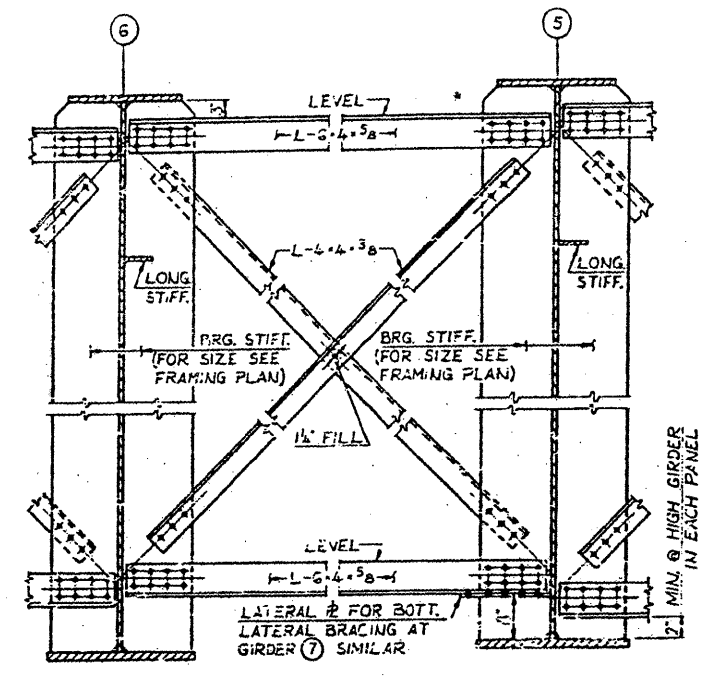
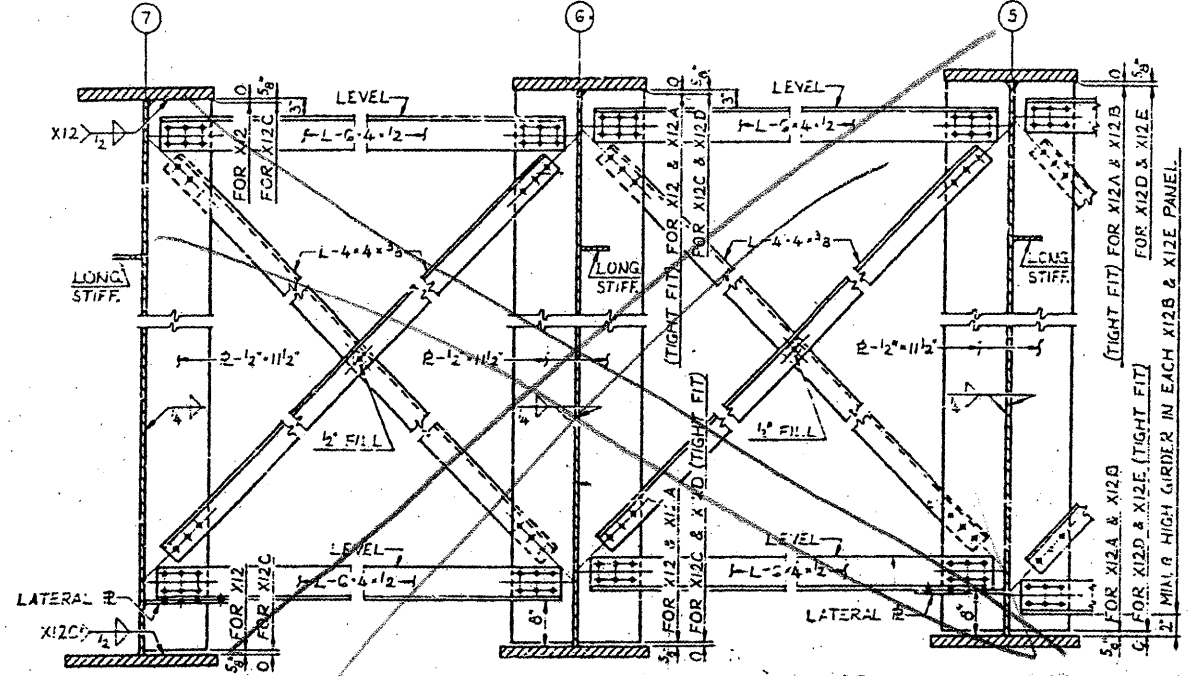


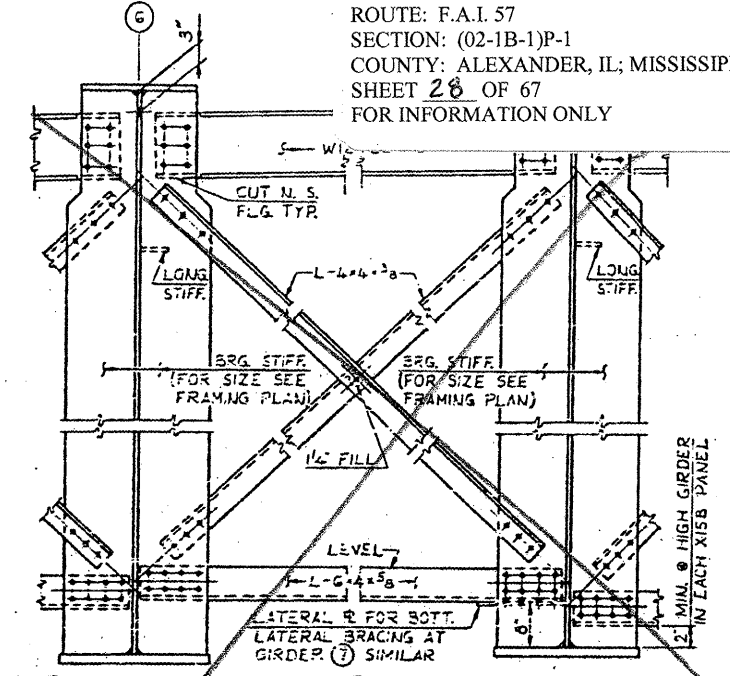
CONTRACT: 78040
 ROUTE: F.A.I. 57
 SECTION: (02-1B-1)P-1
 COUNTY: ALEXANDER, IL; MISSISSIPPI, MO
 SHEET 28 OF 67
 FOR INFORMATION ONLY



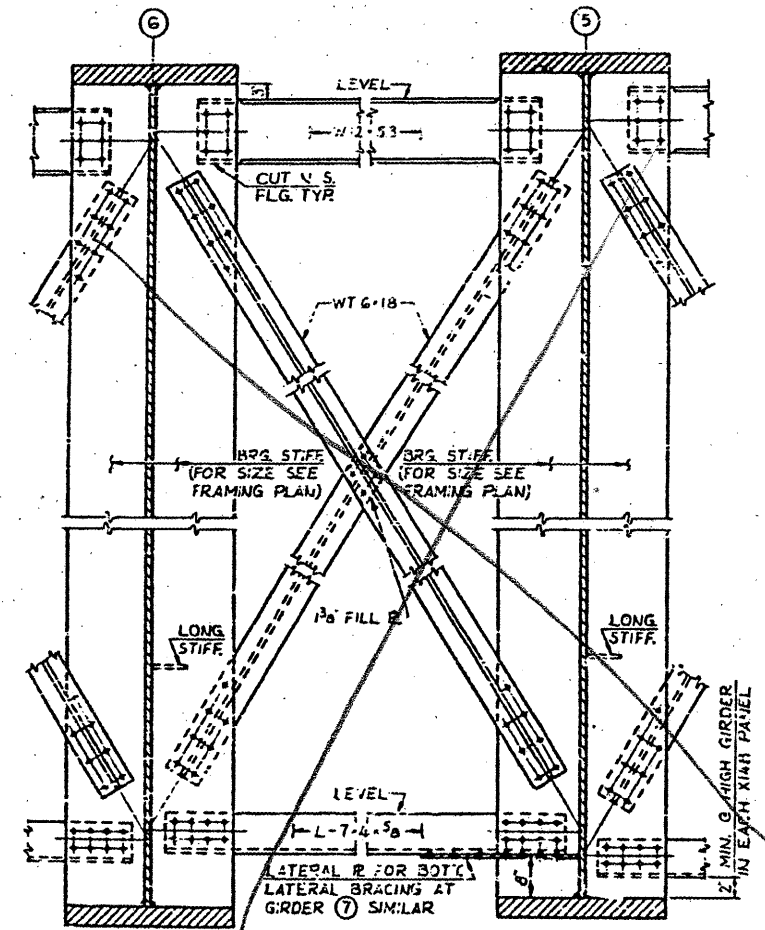
XII X11A X11B
CROSSFRAME XII, X11A & X11B
 DETAILS OF XII & X11B NOT SHOWN OR NOTED, SIMILAR TO X11A



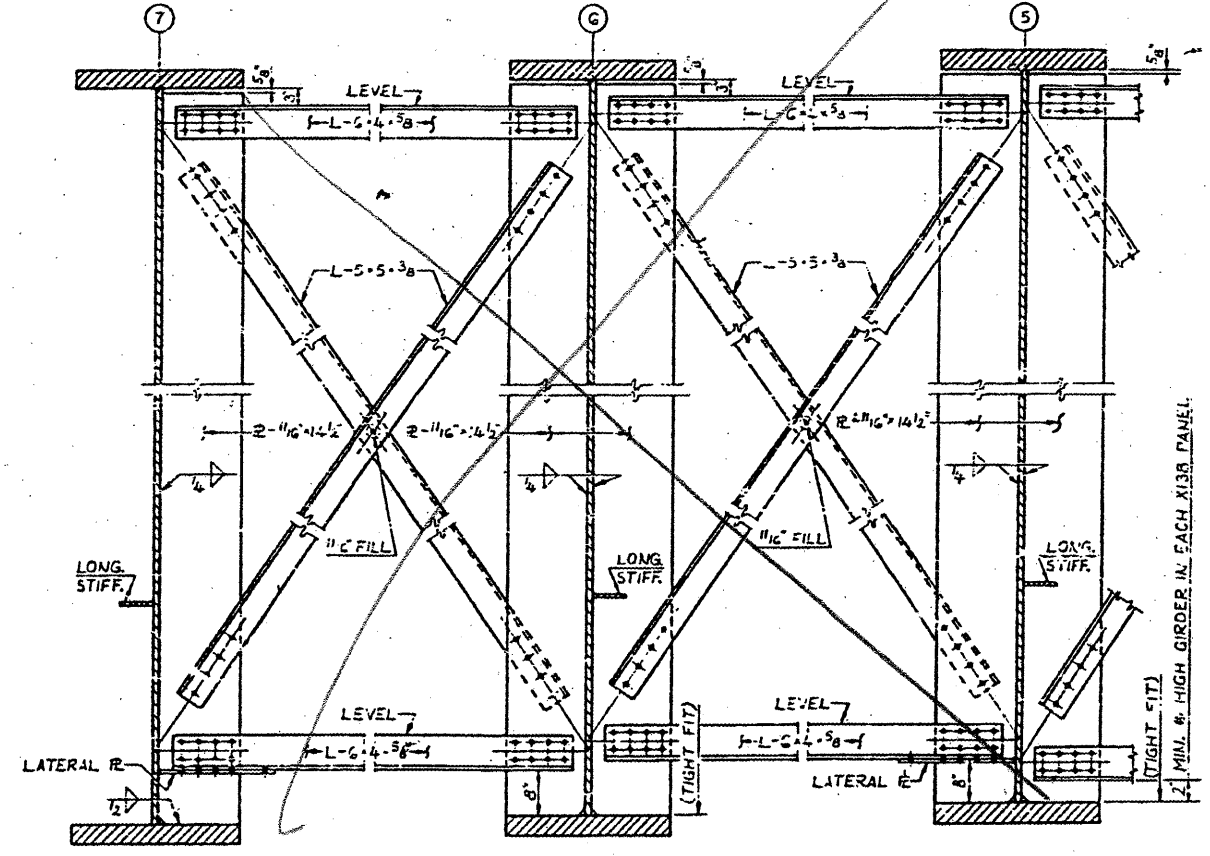
X12 & X12C X12A & X12D X12B & X12E
INTERMEDIATE CROSSFRAME X12, X12A, X12B, X12C, X12D & X12E
 DETAILS OF X12B & X12E NOT SHOWN OR NOTED, SIMILAR TO X12A & X12D



X15 X15A X15B
CROSSFRAME X15, X15A & X15B
 DETAILS OF X15 & X15B NOT SHOWN OR NOTED, SIMILAR TO X15A



X14 X14A X14B
CROSSFRAME X14, X14A & X14B
 DETAILS OF X14 & X14B NOT SHOWN OR NOTED, SIMILAR TO X14A



X13 X13A X13B
INTERMEDIATE CROSSFRAME X13, X13A & X13B
 DETAILS OF X13B NOT SHOWN OR NOTED, SIMILAR TO X13A

NOTES:
 ALL MATERIAL ASTM A 36 UNLESS NOTED.
 ALL FASTENERS SHALL BE 7/8\"/>

BRIDGE NO. 1
 STRUCTURE NO. 002-0022
 FOR INFORMATION ONLY

STEEL DETAILS - SPANS 8A AND 9A
 F.A.I. RTE. 57 OVER THE MISSISSIPPI RIVER
 PROJECT 1-57-9(5)0
 SECTION (02-1B-1)D
 ALEXANDER COUNTY, ILLINOIS
 MISSISSIPPI COUNTY, MISSOURI
 STA. 1141 + 84.75 TO STA. 1182 + 75.25