

INDEX OF SHEETS

- 1 TITLE SHEET
- 2 GENERAL NOTES
- 3 TYPICAL SECTIONS & HOT-MIX ASPHALT MIXTURE REQUIREMENTS
- 4 SUMMARY OF QUANTITIES
- 5 CONSTRUCTION PLAN STA. 0+30± TO 13+54.2±
- 6 CONSTRUCTION PLAN STA. 13+54.2± TO 26+65.6±
- 7 CONSTRUCTION PLAN STA. 26+65.6± TO 39+39.2±
- 8 CONSTRUCTION PLAN STA. 39+39.2± TO 50+54.1±
- 9 CONSTRUCTION PLAN STA. 50+54.1± TO 60+15±
- 10 MISCELLANEOUS DETAILS
- 11 TC-10, DISTRICT 1, TRAFFIC CONTROL & PROTECTION FOR SIDE ROADS, INTERSECTIONS, AND DRIVEWAYS
- 12 TC-13, DISTRICT 1, TYPICAL PAVEMENT MARKINGS

STATE STANDARDS

- 000001-05 STANDARD PAVEMENT MARKING & SYMBOLS
- 424001-05 CURB RAMPS FOR SIDEWALKS
- 604001-02 FRAME AND LIDS TYPE 1
- 606001-03 CONCRETE CURB AND GUTTER
- 701606-05 URBAN LANE CLOSURE MULTILANE 2W
- 701701-05 URBAN LANE CLOSURE MULTILANE INTERSECTION
- 701801-03 LANE CLOSURE MULTILANE, 1W OR 2W CROSSWALK OR SIDEWALK CLOSURE
- 701901 TRAFFIC CONTROL DEVICES (SHEETS 1, 2, & 3)
- 780001-01 TYPICAL PAVEMENT MARKINGS
- 886001 DETECTOR LOOP INSTALLATIONS

STATE OF ILLINOIS
DEPARTMENT OF TRANSPORTATION
DIVISION OF HIGHWAYS

**PLANS FOR PROPOSED
FEDERAL AID HIGHWAY
FAU ROUTE 2887 (UNION AVENUE)
30th STREET TO RICHTON ROAD
RESURFACING
SECTION: 07-00083-00-RS
PROJECT: M-8003 (853)
VILLAGE OF STEGER
COOK-WILL COUNTIES
JOB No. C-91-001-08**

RTE.	CITY SECTION	COUNTY	TOTAL SHEETS	SHEET NO.
2887	07-00083-00-RS	COOK/WILL	10	1
STA.		TO STA.		
FED. RD. DIST. NO.		ILLINOIS PROJECT- M - 8003 (853)		

CONTRACT # 83969



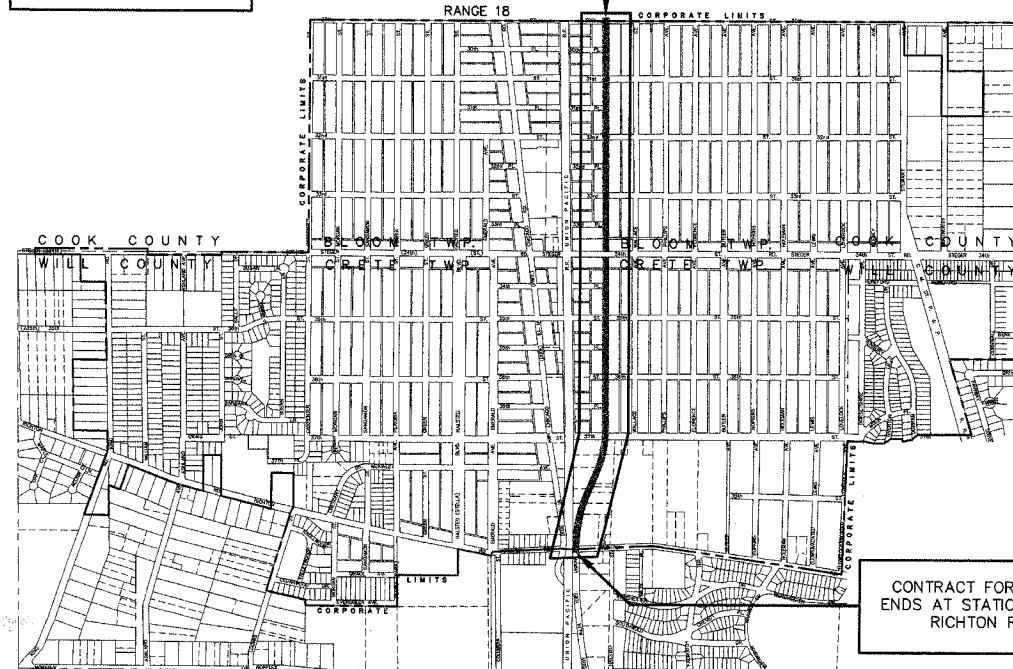
LOCATION OF SECTION INDICATED THIS :-

TRAFFIC DATA

2006 ADT = 4650N/5200S
SPEED LIMIT = 30 M.P.H.
CLASS I

SCALE: PLAN 1" = 50'

CONTRACT FOR SECTION
BEGINS AT STATION 0+30
30th STREET



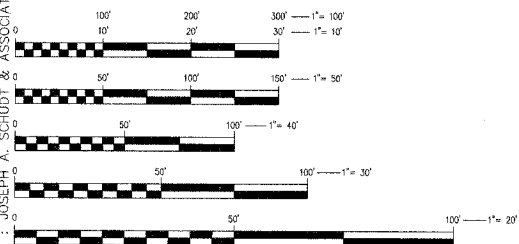
CONTRACT FOR SECTION
ENDS AT STATION 60+15±
RICHTON ROAD

LOCATION MAP UNION AVENUE: GROSS LENGTH OF IMPROVEMENT= 6,045 FT.±
NOT TO SCALE NET LENGTH OF IMPROVEMENT= 5,979 FT.± (1.13 MILES)



CALL J.U.L.I.E.
1-800-892-0123
48 HOURS
(TWO WORKING DAYS)
TOLL FREE
24 HOURS A DAY
7 DAYS A WEEK

I.D.O.T. FIELD ENGINEER: MELCHOR MANGOBA 1-847-705-4408 SCHAUMBURG, IL
CONSULTANT: JOSEPH A. SCHUDT & ASSOCIATES, MATT HORAN 1-708-720-1000 FRANKFORT, IL



FULL SIZE PLANS HAVE BEEN PREPARED USING STANDARD ENGINEERING SCALES.
REDUCED SIZED PLANS WILL NOT CONFORM TO STANDARD SCALES. IN MAKING
MEASUREMENTS ON REDUCED PLANS, THE ABOVE SCALES MAY BE USED.

Joseph A. Schudt & Associates
19350 S. HARLEM AVENUE FRANKFORT, IL 60423
PHONE: 708-720-1000 FAX: 708-720-1065
e-mail: joseph@jasaeng.com <http://www.jasaeng.com>
CIVIL ENGINEERING LAND SURVEYING ENVIRONMENTAL LAND PLANNING GPS SERVICES

COPYRIGHT © 2008
JOSEPH A. SCHUDT & ASSOCIATES
ALL RIGHTS RESERVED

CONTRACT No. 83969

S. Matthew Horan
ILLINOIS PROFESSIONAL ENGINEER NO. 062-019927
SIGNED 4/4/08
LICENSE EXPIRES 11/30/09

STATE OF ILLINOIS
DEPARTMENT OF TRANSPORTATION
DIVISION OF HIGHWAYS

APPROVED APRIL 4 20 08
Pami Shuman
LOCAL AGENCY OFFICIAL

PASSED MAY 15 20 08
Christopher Hart
REGISTERED PROFESSIONAL ENGINEER OF LOCAL ROADS & STREETS

RELEASING FOR BID BASED ON LIMITED REVIEW
MAY 15, 20 08
Diana M. D'Korff
DEPUTY DIRECTOR OF HIGHWAYS REGION 9 ENGINEER



07-22
07-022-JAR