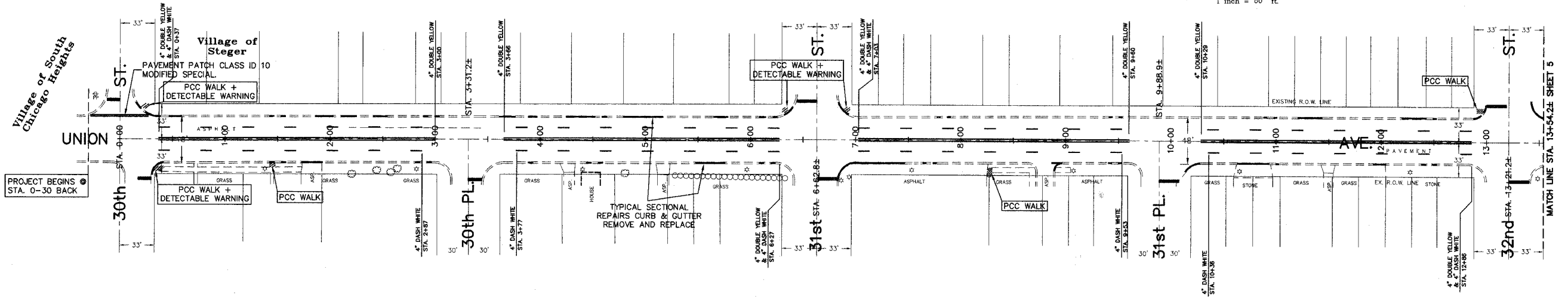


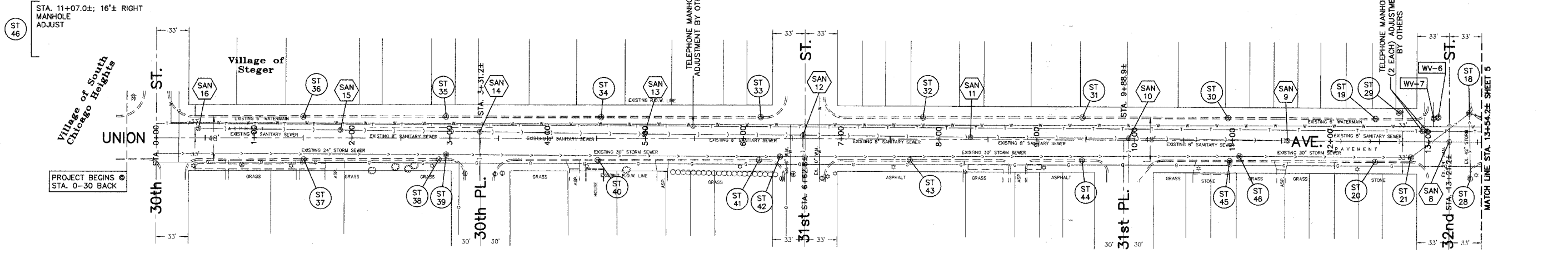
RT.	CITY SECTION	COUNTY	TOTAL SHEETS	SHEET NO.
2887	07-00083-00-RS	COOK/WILL	10	5
STA. 0+30±		TO STA. 13+54.2±		
FED. RD. DIST. NO.	ILLINOIS	PROJECT - M - 8003 (853)	CONTRACT # 83969	



SHORT TERM PAVEMENT MARKING
 CENTERLINE 4" DOUBLE YELLOW - 4' LONG, 40' MAX. SPACING
 LANE LINE 4" WHITE - 4' LONG, 40' MAX. SPACING



ST 44 STA. 9+46.1±; 21'± RIGHT CATCHBASIN TYPE A RECONSTRUCT w/ TYPE 11 FRAME AND GRATE	ST 42 STA. 6+37.4±; 19'± RIGHT MANHOLE ADJUST	ST 40 STA. 4+51.2±; 23'± RIGHT CATCHBASIN TYPE A RECONSTRUCT FURNISH AND INSTALL GRATE FOR TYPE 11 FRAME	ST 38 STA. 2+88.9±; 22'± RIGHT CATCHBASIN TYPE A RECONSTRUCT FURNISH AND INSTALL GRATE FOR TYPE 11 FRAME	ST 36 STA. 1+50.2±; 22'± LEFT CATCHBASIN TYPE C w/ TYPE 1 FRAME AND OPEN LID	ST 34 STA. 4+54.6±; 21'± LEFT CATCHBASIN TYPE C w/ TYPE 1 FRAME AND OPEN LID	ST 32 STA. 7+83.6±; 22'± LEFT CATCHBASIN TYPE C w/ TYPE 1 FRAME AND OPEN LID	ST 30 STA. 10+95.3±; 23'± LEFT CATCHBASIN TYPE C w/ TYPE 1 FRAME AND OPEN LID	ST 28 STA. 13+43.0±; 38'± RIGHT INLET ADJUST	ST 20 STA. 12+45.5±; 21'± RIGHT CATCHBASIN TYPE A RECONSTRUCT	ST 18 STA. 13+41.5±; 29'± LEFT MANHOLE ADJUST
ST 45 STA. 10+97.1±; 21'± RIGHT CATCHBASIN TYPE A RECONSTRUCT w/ TYPE 11 FRAME AND GRATE	ST 43 STA. 7+70.4±; 22'± RIGHT CATCHBASIN TYPE A RECONSTRUCT	ST 41 STA. 6+16.0±; 22'± RIGHT CATCHBASIN TYPE A RECONSTRUCT	ST 39 STA. 2+96.2±; 17'± RIGHT MANHOLE ADJUST	ST 37 STA. 1+50.7±; 22'± RIGHT CATCHBASIN TYPE A RECONSTRUCT FURNISH AND INSTALL GRATE FOR TYPE 11 FRAME	ST 35 STA. 2+96.1±; 22'± LEFT CATCHBASIN TYPE C w/ TYPE 1 FRAME AND OPEN LID	ST 33 STA. 6+17.6±; 22'± LEFT CATCHBASIN TYPE A w/ TYPE 1 FRAME AND OPEN LID	ST 31 STA. 9+46.5±; 22'± LEFT CATCHBASIN TYPE C w/ TYPE 1 FRAME AND OPEN LID ADJUST w/ NEW FRAME AND CLOSED LID	ST 29 STA. 12+69.6±; 29'± LEFT MANHOLE ADJUST	ST 21 STA. 12+82.0±; 16'± RIGHT MANHOLE ADJUST w/ NEW FRAME AND CLOSED LID	ST 19 STA. 12+45.9±; 23'± LEFT CATCHBASIN TYPE A RECONSTRUCT



SAN 16 STA. 0+43.1±; 10'± LEFT SANITARY MANHOLE ADJUST	SAN 15 STA. 1+87.6±; 8'± LEFT SANITARY MANHOLE ADJUST	SAN 14 STA. 3+30.6±; 6'± LEFT SANITARY MANHOLE ADJUST	SAN 13 STA. 4+98.2±; 5'± LEFT SANITARY MANHOLE ADJUST	SAN 12 STA. 6+60.9±; 4'± LEFT SANITARY MANHOLE ADJUST	SAN 11 STA. 8+32.8±; 2'± LEFT SANITARY MANHOLE ADJUST	SAN 10 STA. 9+93.7±; 2'± LEFT SANITARY MANHOLE ADJUST	SAN 9 STA. 11+56.6±; 0'± LEFT SANITARY MANHOLE ADJUST	SAN 8 STA. 13+21.2±; 0'± LEFT SANITARY MANHOLE ADJUST	WV-7 STA. 13+05.2±; 23'± LEFT WATER VALVE VAULT ADJUST	WV-6 STA. 13+09.9±; 25'± LEFT WATER VALVE VAULT ADJUST
---	--	--	--	--	--	--	--	--	---	---

Joseph A. Schudt & Associates
 19350 S. HARLEM AVENUE FRANKFORT, IL 60423
 PHONE: 708-720-1000 FAX: 708-720-1065
 e-mail: jas@jasaeng.com http://www.jasaeng.com
 CIVIL ENGINEERING LAND SURVEYING ENVIRONMENTAL LAND PLANNING GPS SERVICES

Union Avenue Street Paving 30th Street to Richton Road

REVISIONS	
NAME	DATE

ILLINOIS DEPARTMENT OF TRANSPORTATION
CONSTRUCTION PLAN
 SHEET 5 OF 10
 SCALE: AS SHOWN DRAWN BY: J.A.R.
 DATE: 4-4-08 CHECKED BY: S.M.H.

07-22
 07-022-JAR

M:\2007\07-022\07-022-PLAN.dwg, 05:50 SCALE: 43200 8/1/08 J.A.S. COPYRIGHT © JOSEPH A. SCHUDT & ASSOCIATES - JAR