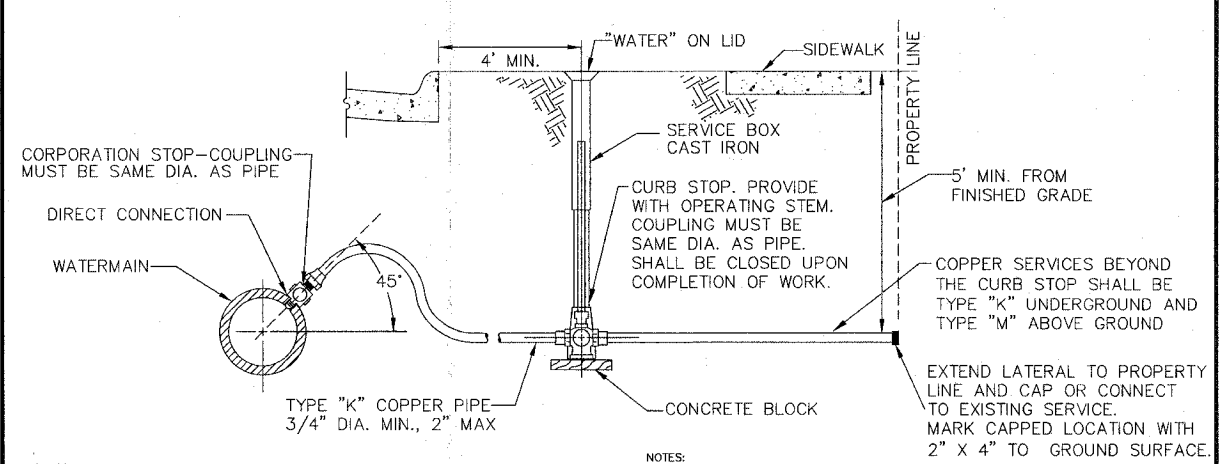


- NOTE:
1. A COMPRESSION TYPE MAIN VALVE, CLOSING WITH STREAM FLOW. THE VALVE WILL BE DESIGNED TO BE HELD CLOSED IN COMPRESSION UNDER STATIC WATER PRESSURE. THE VALVE OPENING WILL BE 5.25" MINIMUM NOMINAL DIAMETER AND OPEN COUNTER-CLOCKWISE. OPERATING NUT SHALL BE 7/8" SQUARE IN SIZE.
 2. THE INLET CONNECTION WILL BE 6" DIA. "OUT-IN" MECHANICAL JOINT (AS DESCRIBED IN SECTION 2, C) WITH RESTRAINING LUGS. FOOT PIECE BELL WILL ACCEPT PIPE OUTSIDE DIAMETERS IN THE 6.9" AND 7.1" RANGE.
 3. ALL HYDRANT BOLTS AND NUTS FROM THE GRADE LINE MARK ON THE BARREL TO THE SHOE BOLTS AND NUTS SHALL BE #304 STAINLESS STEEL.
 4. DELIVERY CLASSIFICATION - ONE PUMPER AND TWO HOSE NOZZLES. THESE NOZZLES SHALL BE 4.5" & 2.5" NOMINAL INSIDE DIA. RESPECTIVELY. THREADS SHALL BE OF NATIONAL STANDARD FIRE HOSE COUPLING SCREW DESIGN.
 5. THE HYDRANTS WILL BE OF "TRAFFIC BREAKAWAY DESIGN" WITH GROUND LINE FLANGE AND SAFETY STEM OPERATOR COUPLING. GRADE LINE SHALL BE POSITIVELY MARKED ON THE LOWER BARREL. THE CENTER LINE OF ALL PORTS SHALL BE A MINIMUM OF 18" ABOVE ESTABLISHED GRADE LINES.
 6. HYDRANTS WILL BE PROVIDED WITH BRONZE-LINED OUTLETS TO ALLOW CORROSION RESISTANT DRAINAGE OF THE BARREL SECTIONS. SEAT AND DRAIN RINGS WILL BE OF BRONZE COMPOSITION AS PROVIDED IN THE STANDARD RECOMMENDATIONS.
 7. NOZZLE CAPS WILL OPEN COUNTER-CLOCKWISE, HAVE NATIONAL STANDARD TREADS, AND BE PROVIDED WITH A SECURITY CHAIN. OPERATING NUT SHALL BE 7/8" SQUARE IN SIZE.
 8. POSITIVE O-RINGS SEALS WILL BE PROVIDED TO PROTECT STEM AND OPERATING NUT THREADS, AND ALL BEARING SURFACES FROM THE ATMOSPHERE AND THE WATERWAY. THE TOP WILL HAVE AN OIL RESERVOIR OR GREASE CHAMBER TO INSURE AUTOMATIC LUBRICATION OF THE STEM THREADS DURING OPERATION.
 9. PRIMARY COATING AND PAINTING MUST COMPLY WITH THE STANDARD RECOMMENDATIONS, AND A SAFETY FINISH COAT WILL BE APPLIED ABOVE THE GRADE LINE. FINISH COAT MUST BE SAFETY YELLOW IN COLOR.

NOT TO SCALE

REVISED	MDW	07/15/05
REVISED	M.C.	04/12/05
REVISED	P.K.	03/25/02
REV. HYD. MODEL STD.	PMCI	06/25/98
METRIC	PMCI	01/27/97
STAND303.DWG	MDM	10/96
REVISION	BY	DATE

CITY OF ROCK ISLAND ENGINEERING DIVISION STANDARD NO. 301A



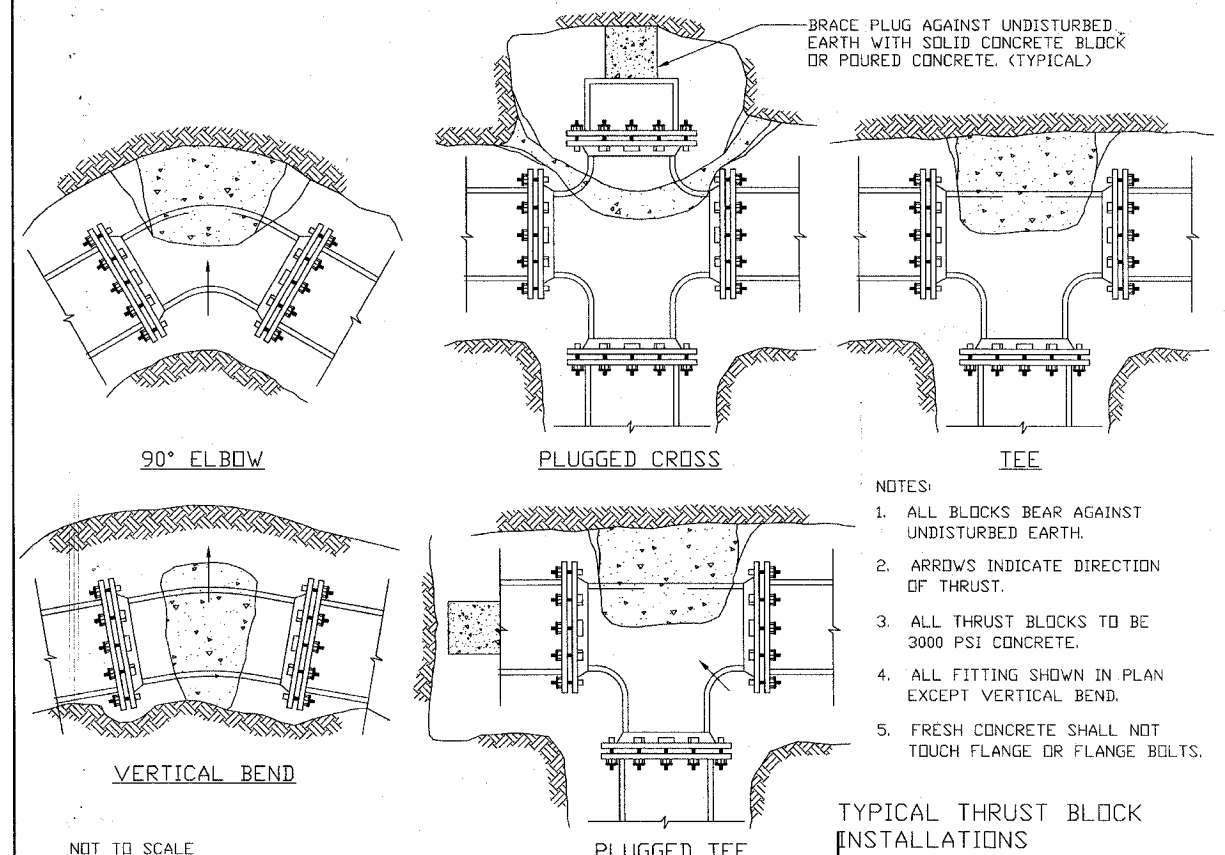
MAXIMUM RECOMMENDED DIRECT TAP SIZES

MAIN DIA.	MAX TAP SIZE BY MAIN MATERIAL TYPE	
	CL 350 DIP & CAST IRON	ALL W/ SADDLE
3"	3/4"	3/4"
4"	3/4"	1"
6"	1"	1-1/2"
8"	1"	2"
10"	1"	2"
12"	1-1/4"	2"
14"	1-1/2"	2" *
16"	2"	2" *
18"	2"	2" *
20"	2"	2" *
24"	2"	2" *

- NOTES:
1. THE SERVICE PIPE SHALL BE LAID IN THE TRENCH WITH SUFFICIENT HORIZONTAL WEAVING TO ALLOW NOT LESS THAN 1' EXTRA LENGTH IN ITS ENTIRE LENGTH.
 2. SERVICE PIPES OVER 2" DIAMETER SHALL BE TAPPED LIVE THROUGH A SADDLE SLEEVE OR CUT-IN TO THE MAIN WITH A SOLID SLEEVE. NOTIFY THE PUBLIC WORKS DEPARTMENT PRIOR TO PERFORMING SUCH A CONNECTION.
 3. THE PIPING FROM TWO OR MORE SERVICES ON THE SAME PREMISES MUST BE KEPT SEPARATE, WITH NO CROSS CONNECTIONS.
 4. CONTACT THE PLUMBING INSPECTOR FOR SPECIAL BEDDING AND INSTALLATION REQUIREMENTS FOR SERVICES IN ACID SOILS OR LANDFILLS.
 5. CURB STOP SHALL BE 4' MIN FROM BACK OF CURB OR EDGE OF PAVEMENT AND 1' MIN FROM PROPERTY LINE, BUT IN EITHER CASE NOT IN A SIDEWALK WITHOUT APPROVAL OF THE PUBLIC WORKS DEPARTMENT.
 6. IF A SADDLE IS PROVIDED FOR TAPPING OF DUCTILE IRON OR CAST IRON WATERMAINS, THE "ALL W/ SADDLE" FIGURES CAN BE USED FOR MAX. TAP SIZES.
 7. MANUFACTURERS DO NOT RECOMMEND TAPPING C900 PVC OVER 12" DIAMETER. * FOR PVC WATER MAINS OVER 12" THAT NEED TO BE TAPPED, CONTACT THE PUBLIC WORKS DEPARTMENT - D.I.P. OR A SPECIAL GRADE OF PVC MAY BE REQUIRED.

REVISED	TAB	4/2/02
REVISED	PMCI	12/14/98
METRIC	PMCI	01/27/97
STAND303.DWG	CWE	06/19/91
REVISION	BY	DATE

STANDARD TAP SERVICE PIPING (COPPER)
NOT TO SCALE
CITY OF ROCK ISLAND ENGINEERING DIVISION STANDARD NO. 303

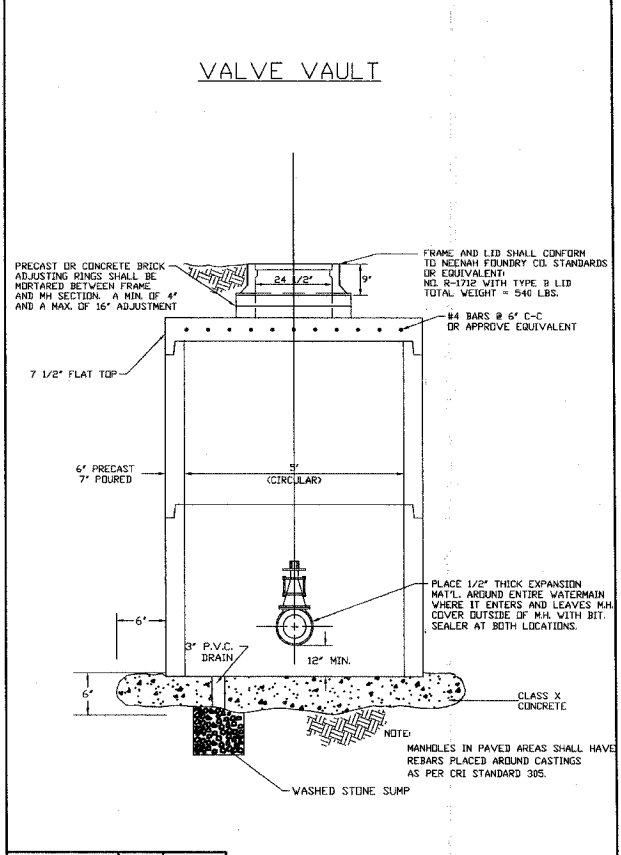


- NOTES:
1. ALL BLOCKS BEAR AGAINST UNDISTURBED EARTH.
 2. ARROWS INDICATE DIRECTION OF THRUST.
 3. ALL THRUST BLOCKS TO BE 3000 PSI CONCRETE.
 4. ALL FITTING SHOWN IN PLAN EXCEPT VERTICAL BEND.
 5. FRESH CONCRETE SHALL NOT TOUCH FLANGE OR FLANGE BOLTS.

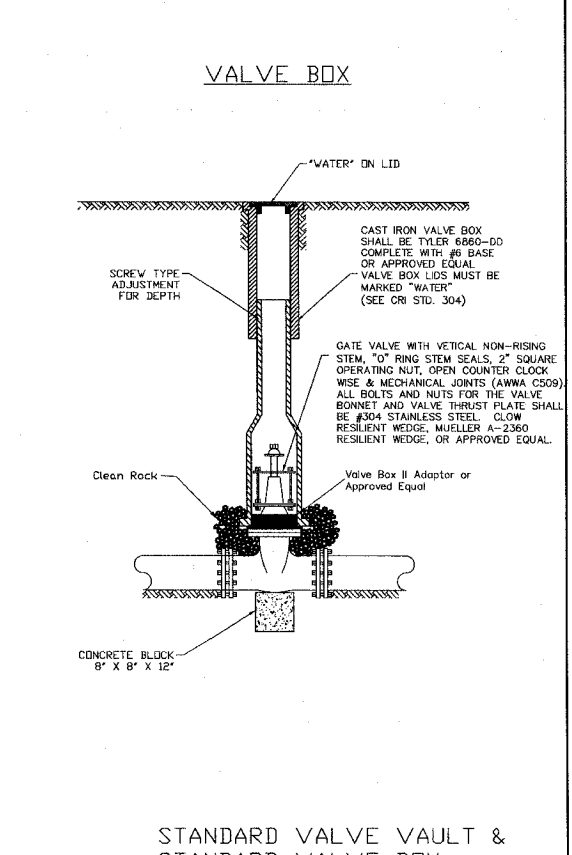
TYPICAL THRUST BLOCK INSTALLATIONS
CITY OF ROCK ISLAND ENGINEERING DIVISION STANDARD NO. 302

NOT TO SCALE

STANDARDIZED	PMCI	10/03/94
REVISION	BY	DATE



REVISED	M.C.	04/12/05
REVISED	D.M.	04/03/02
REVISED	P.K.	03/25/02
REVISED	TAB	02/24/98
STAND304.DWG	MDW	03/12/93



STANDARD VALVE VAULT & STANDARD VALVE BOX
CITY OF ROCK ISLAND ENGINEERING DIVISION STANDARD NO. 304

85434
06-00180-00-RS
C.R.I. STANDARD DETAILS
CITY OF ROCK ISLAND ENGINEERING DIVISION
24th Street Resurfacing
18th to 25th Avenue

Job Number	2569	By	mdw	Date	3-07-08
Computer Drawing Name	2569 Standard Details	Sheet	36	Of	38

ROCK ISLAND ILLINOIS