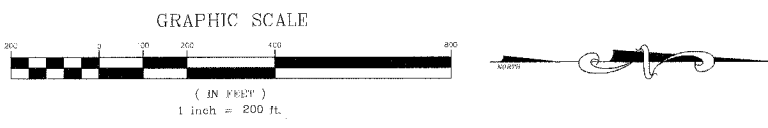
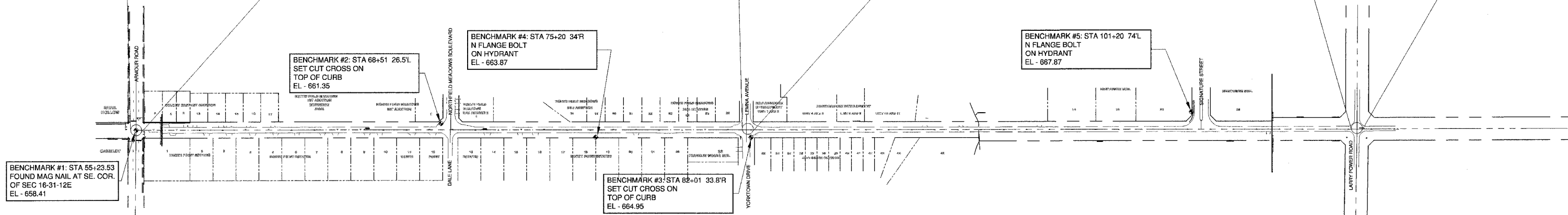
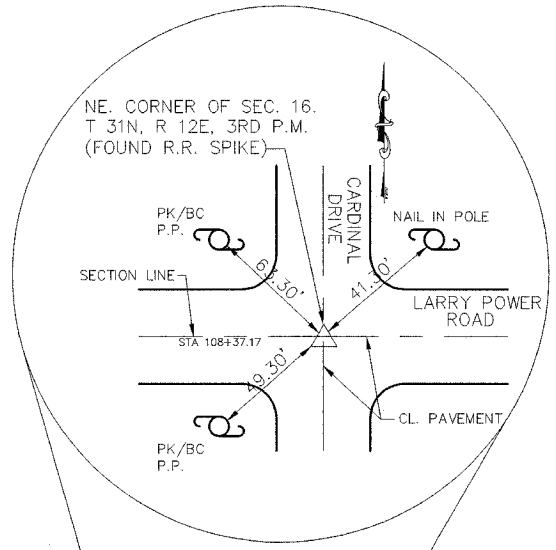
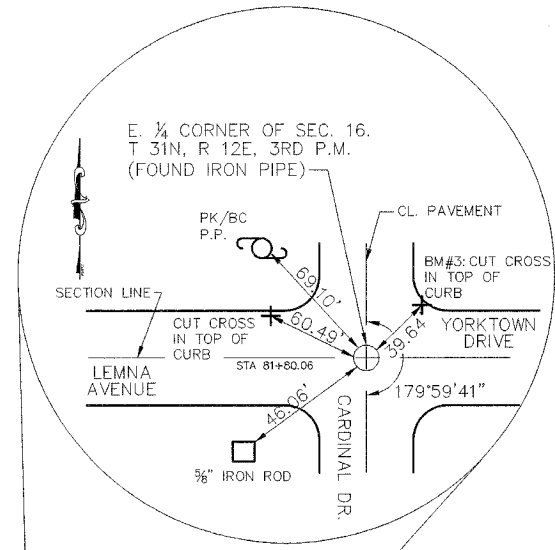
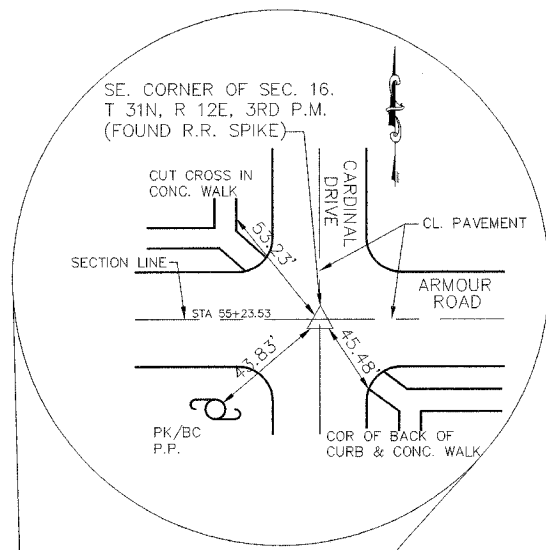


F.A.U. RTE.	SECTION	COUNTY	TOTAL SHEETS	SHEET NO.
6208	07-00093-00-RP	KANKAKEE	43	09
MG2A# M2-096			CONTRACT NO.: 87342	



BENCHMARK #1: STA 55+23.53
FOUND MAG NAIL AT SE. COR.
OF SEC 16-31-12E
EL - 658.41

BENCHMARK #2: STA 68+51 26.5L
SET CUT CROSS ON
TOP OF CURB
EL - 661.35

BENCHMARK #4: STA 75+20 34'R
N FLANGE BOLT
ON HYDRANT
EL - 663.87

BENCHMARK #3: STA 82+01 33.8'R
SET CUT CROSS ON
TOP OF CURB
EL - 664.95

BENCHMARK #5: STA 101+20 74'L
N FLANGE BOLT
ON HYDRANT
EL - 667.67

M²
M. GINGERICH, GERAUX
ASSOCIATES

240 N. Industrial Drive
Bradley, Illinois 60915
815-939-4921
FAX: 815-939-9810

REVISIONS			
DATE	BY	DESCRIPTION	
2/11/08	AJC/JWP	PER IDOT REVIEW	
3/27/08	JWP	PER IDOT REVIEW	

ILLINOIS DEPARTMENT OF TRANSPORTATION
ALIGNMENT, BENCHMARKS & TIES
CARDINAL DRIVE

SCALE: DRAWN BY: MJC/AJC
DATE: 1/4/08 CHECKED BY: JWP