

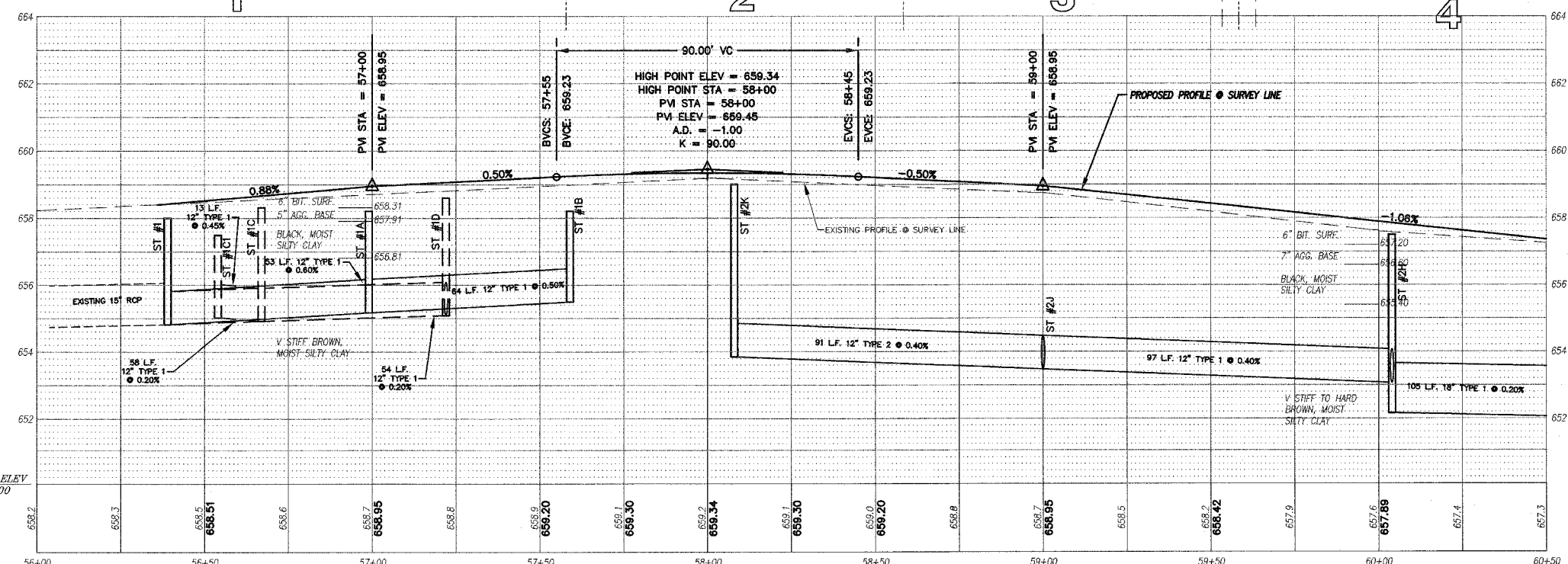
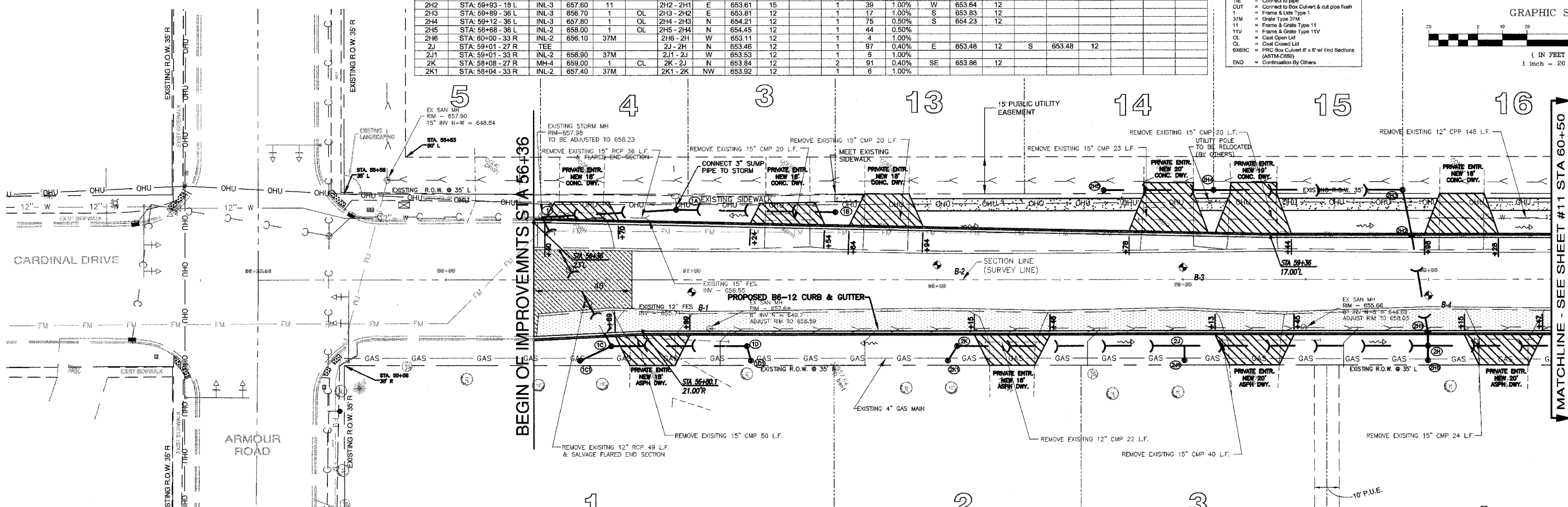
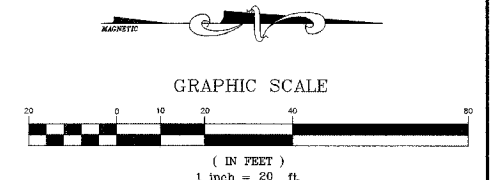
STORM SEWER STRUCTURES & PIPES

Structure ID	Location	Structure Information		IDOT Type Fr	Lid	Pipe Segment	Direction	Invert	Out Pipe		Slope	Direction	In Pipe		Direction	In Pipe		
		Type	Rim Elev						Pipe Size (in)	Length (ft)			Pipe Type	Invert		Pipe Size (in)	Invert	Pipe Size (in)
1	STA: 56+39 - 25 L	EXMH	658.20	37M		1A-1	S	655.15	12	1	53	0.60%	N	654.83	12	NE	654.83	12
1A	STA: 56+94 - 29 L	INL-3	658.20	37M		1B-1A	S	655.49	12	1	64	0.50%	N	655.17	12			
1B	STA: 57+59 - 29 L	INL-2	658.20	37M														
1C	STA: 56+67 - 27 R	INL-3	658.30	1	CL	1C-1	SW	654.95	12	1	58	0.20%	SE	654.97	12	N	654.97	12
1C1	STA: 56+64 - 33 R	INL-2	657.50	37M		1C1-1C	NW	655.03	12	1	13	0.45%						
1D	STA: 57+22 - 27 R	INL-3	658.00	1	CL	1D-1C	S	655.08	12	1	54	0.20%	NE	655.10	12			
1D1	STA: 57+24 - 33 R	INL-2	657.60	37M		1D1-1D	SW	655.13	12	1	5	0.50%						
2H	STA: 60+00 - 27 R	MH-4	657.50	1	CL	2H-2G	N	652.17	18	1	105	0.20%	W	653.17	15	E	653.07	12
2H1	STA: 60+00 - 22 R	INL-3	657.40	11		2H1-2H	E	653.20	15	1	3	1.00%	W	653.22	15			
2H2	STA: 59+93 - 18 L	INL-3	657.60	11		2H2-2H1	E	653.61	15	1	39	1.00%	W	653.64	12			
2H3	STA: 59+89 - 36 L	INL-3	656.70	1	OL	2H3-2H2	E	653.81	12	1	17	1.00%	S	653.83	12			
2H4	STA: 59+12 - 36 L	INL-3	657.80	1	OL	2H4-2H3	N	654.21	12	1	75	0.50%	S	654.23	12			
2H5	STA: 58+88 - 36 L	INL-2	658.00	1	OL	2H5-2H4	N	654.45	12	1	44	0.50%						
2H6	STA: 60+00 - 33 R	INL-2	656.10	37M		2H6-2H1	W	653.11	12	1	7	1.00%						
2J	STA: 59+01 - 27 R	TEE	658.00	1		2J-2H	N	653.46	12	1	97	0.40%	E	653.48	12	S	653.48	12
2J1	STA: 59+01 - 33 R	INL-2	658.90	37M		2J1-2J	W	653.53	12	1	5	1.00%						
2K	STA: 58+08 - 27 R	MH-4	659.00	1	CL	2K-2J	N	653.84	12	2	91	0.40%	SE	653.86	12			
2K1	STA: 58+04 - 33 R	INL-2	657.40	37M		2K1-2K	NW	653.92	12	1	6	1.00%						

STORM STRUCTURE LEGEND

- EXMH = Existing manhole
- FES = RRC Flared End Section
- INL-2 = Inlet Type A, 2 Dia
- INL-SP = Inlet Type A, 2 Dia (Special)
- INL-3 = Inlet Type B, 3 Dia
- CB-4 = Catch Basin Type A, 4 Dia
- CB-5 = Catch Basin Type A, 5 Dia
- MH-4 = Manhole Type A, 4 Dia
- MH-5 = Manhole Type A, 5 Dia
- MH-6 = Manhole Type A, 6 Dia
- MH-7 = Manhole Type A, 7 Dia
- RES-6 = Resistor CRASIN, 6 Dia
- RES-8 = RCP Inlet Tee
- INL-SP = Inlet Type A (Special)
- TEE = Connect to Box Culvert & cut pipe flush
- CUT = Frame & Lids Type 1
- 37M = Grate Type 37M
- 11 = Frame & Grate Type 11
- 11V = Frame & Grate Type 11V
- CL = Cast Open Lid
- OL = Cast Closed Lid
- 6X6BC = RRC Box Culvert 6' x 6' w/ End Sections (ASTM C695)
- END = Continuation By Others

F.A.U. RTE.	SECTION	COUNTY	TOTAL SHEETS	SHEET NO.
6208	07-00093-00-RP	KANKAKEE	43	10
MG2A# M2-096		CONTRACT NO.: 87342		



LEGEND

- [Hatched Box] - PAVEMENT WIDENING
- [Diagonal Lines] - PAVEMENT REMOVAL
- [Cross-hatched Box] - BUTT JOINT
- [Dashed Line] - PROPOSED STORM SEWER
- [Circle with 'S'] - PROPOSED STORM STRUCTURE ID
- [Hatched Box] - PROPOSED DRIVEWAY REPLACEMENT

M. GINGERICH, GERAUX ASSOCIATES
 240 N. Industrial Drive
 Bradley, Illinois 60815
 815-939-4921
 FAX - 815-939-9810

REVISIONS		
DATE	BY	DESCRIPTION
2/11/08	AKJ/JWP	PER IDOT REVIEW
3/27/08	JWP	PER IDOT REVIEW
4/1/08	JWP	PER REVIEWS
5/7/08	JWP	ONE PATH REVISION PER COMMENT

ILLINOIS DEPARTMENT OF TRANSPORTATION
 PLAN & PROFILE SHEETS
 CARDINAL DRIVE
 STA. 56+36 TO STA. 60+50
 SCALE: VERTICAL 1" = 2'
 HORIZONTAL 1" = 20'
 DATE: 1/4/08
 DRAWN BY: MJO/AJC
 CHECKED BY: JWP