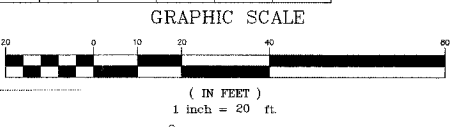


STORM SEWER STRUCTURES & PIPES

Structure Information										Out Pipe				In Pipe				In Pipe				
Structure ID	Location	Structure Type/Ø	Rim Elev	IDOT Type Fr	Lid	Pipe Segment	Direction	Invert	Pipe Size (in)	Added Spec	Pipe Type	Length (ft)	Slope	Direction	Invert	Pipe Size (in)	Direction	Invert	Pipe Size (in)			
2	STA: 62+59 - 35 R	FES								EDE				W	651.47	42						
2A	STA: 62+59 - 27 R	MH-7	656.40	1	OL	2A - 2	E	651.51	42	EDE	1	7	0.50%	W	651.53	42	S	651.56	21	N	651.56	21
2B	STA: 62+58 - 35 L	MH-6	657.10	1	OL	2B - 2A	E	651.83	42	EDE	1	60	0.50%	S	652.08	24	NW	652.83	15	W	652.35	Ex 15
2B1	STA: 62+66 - 44 L	FES																				
2C	STA: 62+52 - 36 L	MH-4	658.10	1	CL	2C - 2B	N	652.12	24		1	4	1.00%	S	652.15	15	W	654.20	24			
2C1	STA: 62+52 - 42 L	TIE																				
2C2	STA: 62+00 - 36 L	TEE																				
2C3	STA: 62+00 - 18 L	INL-3	655.80	11		2C3 - 2C2	W	652.71	12		1	17	1.00%	W	651.53	42	S	651.56	21	N	651.56	21
2C4	STA: 61+93 - 18 L	INL-2	655.80	11		2C4 - 2C3	N	652.80	12		1	5	1.00%	S	652.75	12						
2C5	STA: 61+51 - 36 L	INL-3	656.10	1	CL	2C5 - 2C4	N	652.85	15		1	47	0.50%	W	653.73	12	S	652.94	12			
2C6	STA: 61+51 - 46 L	FES																				
2C6	STA: 61+51 - 46 L	FES																				
2C7	STA: 60+97 - 36 L	INL-2	656.40	1	OL	2C7 - 2C6	N	653.21	12		1	53	0.50%	W	652.03	12	S	651.85	21			
2D	STA: 62+00 - 27 R	TEE																				
2D	STA: 62+00 - 27 R	TEE																				
2D1	STA: 62+00 - 22 R	INL-3	655.70	11		2D1 - 2D	E	652.06	12		1	3	1.00%	S	652.65	12						
2D2	STA: 61+93 - 22 R	INL-2	655.70	11		2D2 - 2D1	N	652.70	12		1	5	1.00%	S	652.65	12						
2F	STA: 61+59 - 27 R	MH-4	655.80	1	CL	2F - 2D	N	651.70	21		1	37	0.15%	E	651.72	12	S	651.83	18			
2F1	STA: 61+59 - 33 R	INL-2	654.20	37M		2F1 - 2F	W	651.76	12		1	7	0.50%	W	651.76	12						
2G	STA: 61+06 - 27 R	TEE																				
2G1	STA: 61+06 - 33 R	INL-2	654.90	37M		2G1 - 2G	W	652.24	12		1	5	1.00%	E	652.19	12	S	651.96	18			

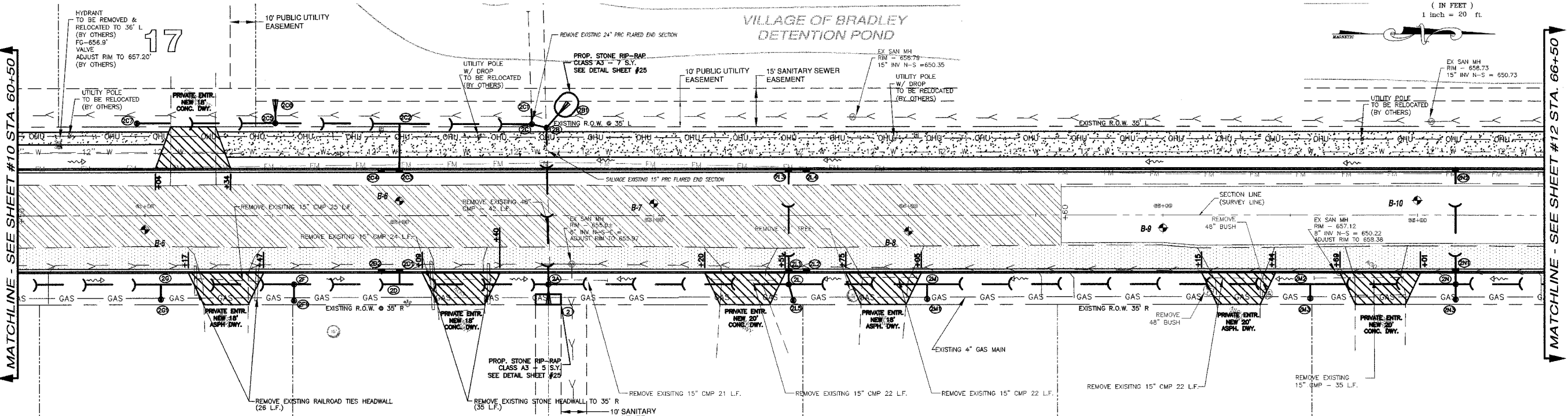
STORM SEWER STRUCTURES & PIPES CONT

Structure Information										Out Pipe				In Pipe				In Pipe				
Structure ID	Location	Structure Type/Ø	Rim Elev	IDOT Type Fr	Lid	Pipe Segment	Direction	Invert	Pipe Size (in)	Added Spec	Pipe Type	Length (ft)	Slope	Direction	Invert	Pipe Size (in)	Direction	Invert	Pipe Size (in)			
2L	STA: 63+53 - 27 R	MH-4	655.70	1	CL	2L - 2A	S	651.70	21		1	93	0.15%	W	652.24	12	NE	651.72	12	N	651.82	18
2L1	STA: 63+53 - 22 R	INL-3	655.70	11		2L1 - 2L	E	652.28	12		1	4	1.00%	N	652.64	12	W	652.30	12			
2L2	STA: 63+80 - 22 R	INL-2	656.70	11		2L2 - 2L1	S	652.70	12		1	6	1.00%									
2L3	STA: 63+53 - 18 L	INL-3	655.80	11		2L3 - 2L1	E	652.68	12		1	38	1.00%	N	652.70	12						
2L4	STA: 63+80 - 18 L	INL-2	655.80	11		2L4 - 2L3	S	652.75	12		1	5	1.00%									
2L5	STA: 63+55 - 33 R	INL-2	654.10	37M		2L5 - 2L	SW	651.77	12		1	5	1.00%									
2M	STA: 64+07 - 27 R	TEE																				
2M1	STA: 64+07 - 33 R	INL-2	655.00	37M		2M1 - 2M	W	652.49	12		1	5	1.00%									
2M2	STA: 65+58 - 27 R	TEE																				
2M3	STA: 65+58 - 33 R	INL-2	656.80	37M		2M3 - 2M2	W	653.53	12		1	5	1.00%									
2N	STA: 66+15 - 27 R	MH-4	658.90	1	CL	2N - 2M2	S	653.82	12		1	56	0.70%	W	655.63	12	E	654.63	12	N	654.90	12
2N1	STA: 66+15 - 22 R	INL-3	659.10	11		2N1 - 2N	E	655.67	12		1	4	1.00%	W	655.69	12						
2N2	STA: 66+15 - 18 L	INL-2	659.10	11		2N2 - 2N1	E	656.07	12		1	38	1.00%									
2N3	STA: 66+15 - 33 R	INL-2	657.90	37M		2N3 - 2N	W	654.88	12		1	5	1.00%									



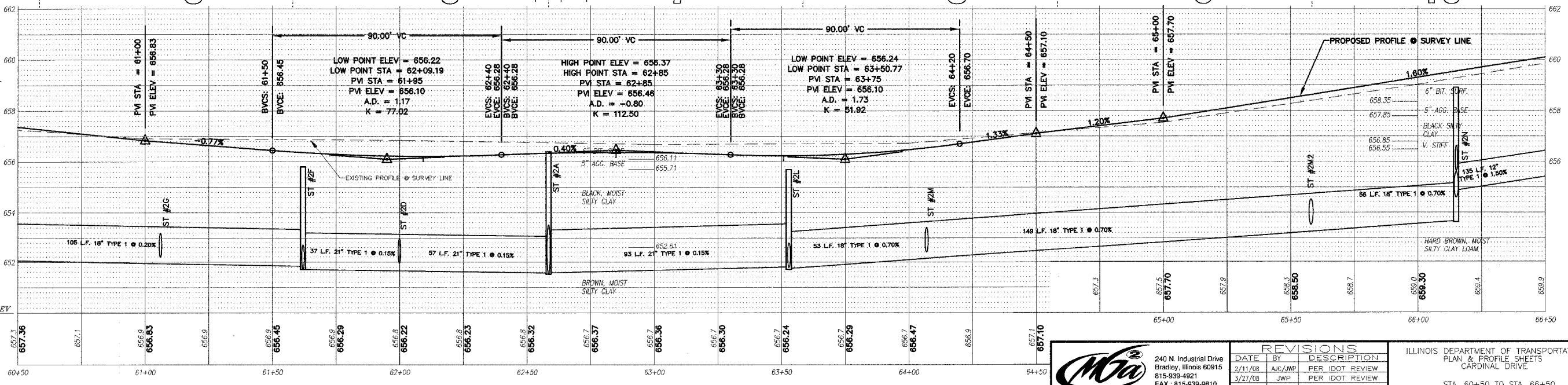
STORM STRUCTURE LEGEND

- EXM: Existing manhole
- FES: PRC Flared End Section
- INL-2: Inlet Ty A, 2 Dia
- INL-SP: Inlet Ty A, 2 Dia (Special)
- INL-3: Inlet Ty B, 3 Dia
- CB-4: Catch Basin Ty A, 4 Dia
- CB-5: Catch Basin Ty A, 5 Dia
- MH-4: Manhole Ty A, 4 Dia
- MH-5: Manhole Ty A, 5 Dia
- MH-6: Manhole Ty A, 6 Dia
- MH-7: Manhole Ty A, 7 Dia
- RES-8: Restrictor CBASIN, 8 Dia
- TEE: RCP Tee
- INL-SP: Inlet Ty A (Special)
- TIE: Connect to pipe
- CUT: Connect to Box Culvert & cut pipe flush
- 37M: Frame & Lids Type 1
- 11: Gasie Type STM
- 11V: Frame & Grate Type 11V
- CL: Cast Closed Lid
- 6X6BC: PRC Box Culvert 6' x 6' w/ End Sections (ASTM-C665)
- END: Continuation by Others



LEGEND

- PAVEMENT WIDENING
- PAVEMENT REMOVAL
- BUTT JOINT
- PROPOSED STORM SEWER
- PROPOSED STORM STRUCTURE ID
- PROPOSED DRIVEWAY REPLACEMENT



M. GINGERICH, GERAUX & ASSOCIATES

240 N. Industrial Drive
Bradley, Illinois 60915
815-939-4921
FAX: 815-939-9810

REVISIONS

DATE	BY	DESCRIPTION
2/11/08	AJC/JWP	PER IDOT REVIEW
3/27/08	JWP	PER IDOT REVIEW
4/1/08	JWP	PER IDOT REVIEW
5/7/08	JWP	ONE PATH REVISION PER COMMENT

ILLINOIS DEPARTMENT OF TRANSPORTATION
PLAN & PROFILE SHEETS
CARDINAL DRIVE

STA. 60+50 TO STA. 66+50

SCALE: VERTICAL 1" = 2'
HORIZONTAL 1" = 20'

DATE: 1/4/08 DRAWN BY: MAJ/AJC
CHECKED BY: JWP