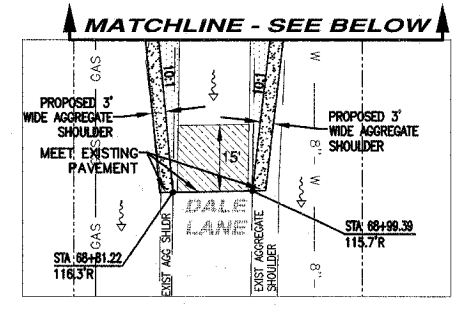


STORM SEWER STRUCTURES & PIPES

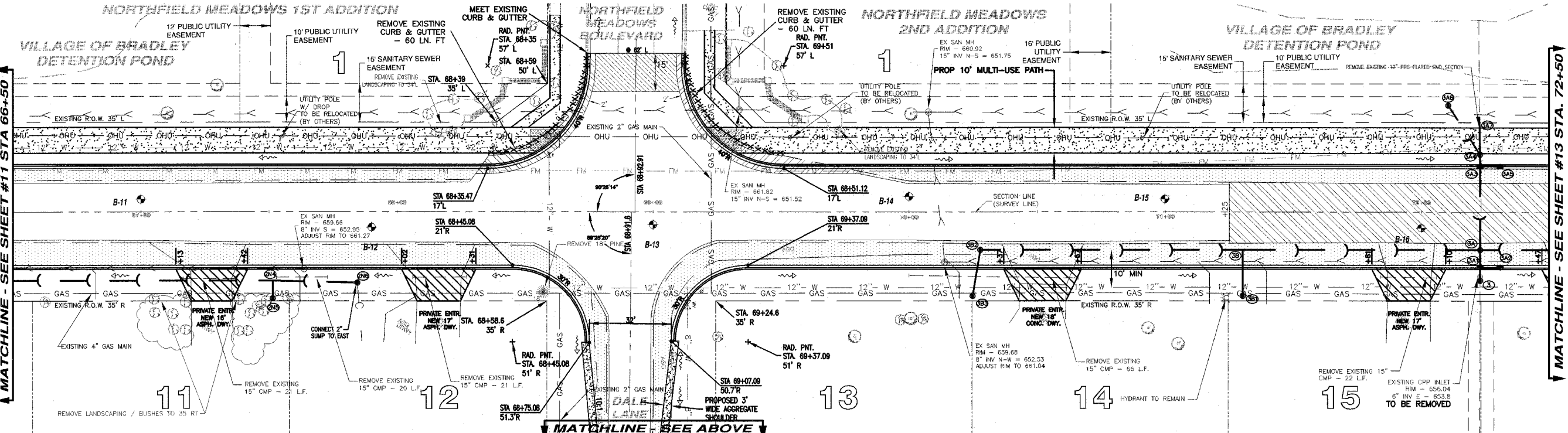
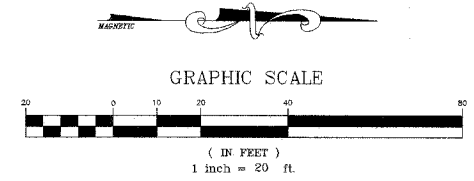
Structure Information										Out Pipe										
Structure ID	Location	Structure Type/Ø	Rim Elev	IDOT Type Fr	Lid	Pipe Segment	Direction	Invert	Pipe Size (in)	Added Spec	Pipe Type	Length (ft)	Slope	Direction	Invert	Pipe Size (in)	Direction	Invert	Pipe Size (in)	
2N4	STA: 67+51 - 27 R	TEE	659.70	37M		2N4 - 2N	S	656.93	12		1	135	1.50%	E	656.93	12	N	656.93	12	
2N5	STA: 67+51 - 34 R	INL-2	659.70			2N5 - 2N4	W	656.99	12		1	6	1.00%							
2N6	STA: 67+84 - 28 R	INL-2	661.20	1	CL	2N6 - 2N4	S	657.41	12		1	32	1.50%							
3	STA: 72+23 - 27 R	MH-5	658.40	1	OL			654.00	EX 6" CPP					W	654.18	30				
3A1	STA: 72+23 - 22 R	MH-5	659.30	11		3A1 - 3	E	654.20	30		1	3	0.30%	W	654.22	30	N	656.02	12	
3A	STA: 72+23 - 15 R	MH-5	659.43	1	CL	3A - 3A1	E	654.24	30		1	5	0.30%	W	654.26	30	S	654.66	12	
3A2	STA: 72+31 - 22 R	INL-2	659.30	11		3A2 - 3A1	E	656.08	12		1	6	1.00%							
3A3	STA: 72+23 - 18 L	MH-5	659.35	11		3A3 - 3A	E	654.36	30		1	31	0.30%	W	654.38	30	N	656.22	12	
3A4	STA: 72+23 - 22 L	MH-4	659.90	1	CL	3A4 - 3A3	E	654.39	30		1	3	0.30%				SW	655.71	12	
3A5	STA: 72+31 - 18 L	INL-2	659.35	11		3A5 - 3A3	S	656.28	12		1	6	1.00%							
3A6	STA: 72+11 - 42 L	INL-3	658.80	37M		3A6 - 3A4	NE	655.93	12		1	22	1.00%					W	656.43	12
3A7	STA: 72+23 - 37 L	TIE				3A7 - 3A4	E	656.50	12		1	14	0.50%							
3B	STA: 71+30 - 15 R	TEE				3B - 3A	N	655.02	12		2	91	0.40%	E	655.02	12	S	655.02	12	
3B1	STA: 71+30 - 33 R	INL-2	658.20	37M		3B1 - 3B	W	655.19	12		1	17	1.00%							
3B2	STA: 70+28 - 15 R	MH-4	661.00	1	CL	3B2 - 3B	N	655.42	12		2	101	0.40%	E	656.12	12				
3B3	STA: 70+25 - 33 R	INL-2	659.30	37M		3B3 - 3B2	W	656.29	12		1	17	1.00%							

STORM STRUCTURE LEGEND

- EXM: Existing Manhole
- FES: PRG Flared End Section
- INL-2: Inlet T/A 2 Dia
- INL-SP: Inlet T/A 2 Dia (Special)
- INL-3: Inlet T/A 3 Dia
- CB-4: Catch Basin T/A 4 Dia
- CB-5: Catch Basin T/A 5 Dia
- MH-4: Manhole T/A 4 Dia
- MH-5: Manhole T/A 5 Dia
- MH-6: Manhole T/A 6 Dia
- MH-7: Manhole T/A 7 Dia
- RES-6: Resistor CB/ASIN, 6 Dia
- TEE: Tee
- INL-SP: Inlet Type A (Special)
- TIE: Tie
- CON: Connect to pipe
- CON: Connect to Box Culvert & out pipe flush
- OUT: Out
- 1: Frame & Lid Type 1
- 37M: Grate Type 37M
- 11: Frame & Grate Type 11
- 11V: Frame & Grate Type 11V
- CL: Cast Open Lid
- CL: Cast Closed Lid
- 600BC: PRG Box Culvert 6' x 6' w/ End Sections (AS/NZS4580)
- END: Continuation by Others

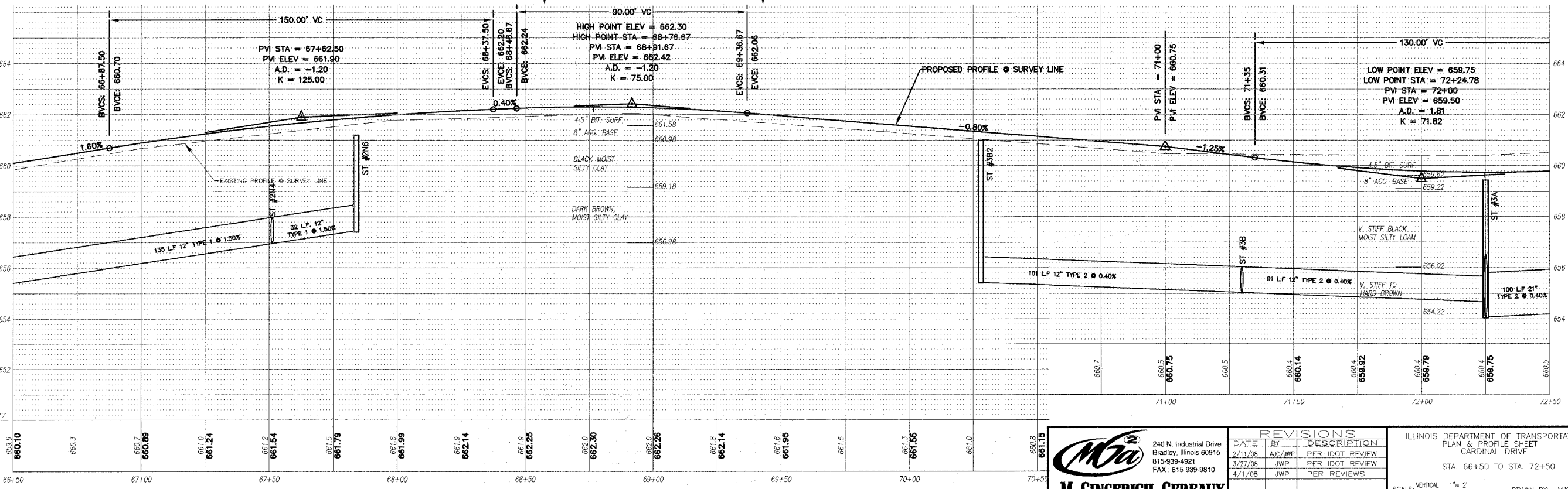


F.A.U. RTE.	SECTION	COUNTY	TOTAL SHEETS	SHEET NO.
6208	07-00093-00-RP	KANKAKEE	43	12
MG2A# M2-096			CONTRACT NO.: 87342	



LEGEND

- PAVEMENT WIDENING
- PAVEMENT REMOVAL
- BUTT JOINT
- PROPOSED STORM SEWER
- PROPOSED STORM STRUCTURE ID
- PROPOSED DRIVEWAY REPLACEMENT



MIA
M. GINGERICH, GERAUX & ASSOCIATES
 240 N. Industrial Drive
 Bradley, Illinois 60915
 815-939-4921
 FAX: 815-939-9810

REVISIONS

DATE	BY	DESCRIPTION
2/1/08	AJK/JWP	PER IDOT REVIEW
3/27/08	JWP	PER IDOT REVIEW
4/1/08	JWP	PER REVIEWS

ILLINOIS DEPARTMENT OF TRANSPORTATION
 PLAN & PROFILE SHEET
 CARDINAL DRIVE
 STA. 66+50 TO STA. 72+50
 SCALE: VERTICAL 1" = 2'
 HORIZONTAL 1" = 20'
 DATE: 1/4/08
 DRAWN BY: MJO/AJC
 CHECKED BY: JWP