

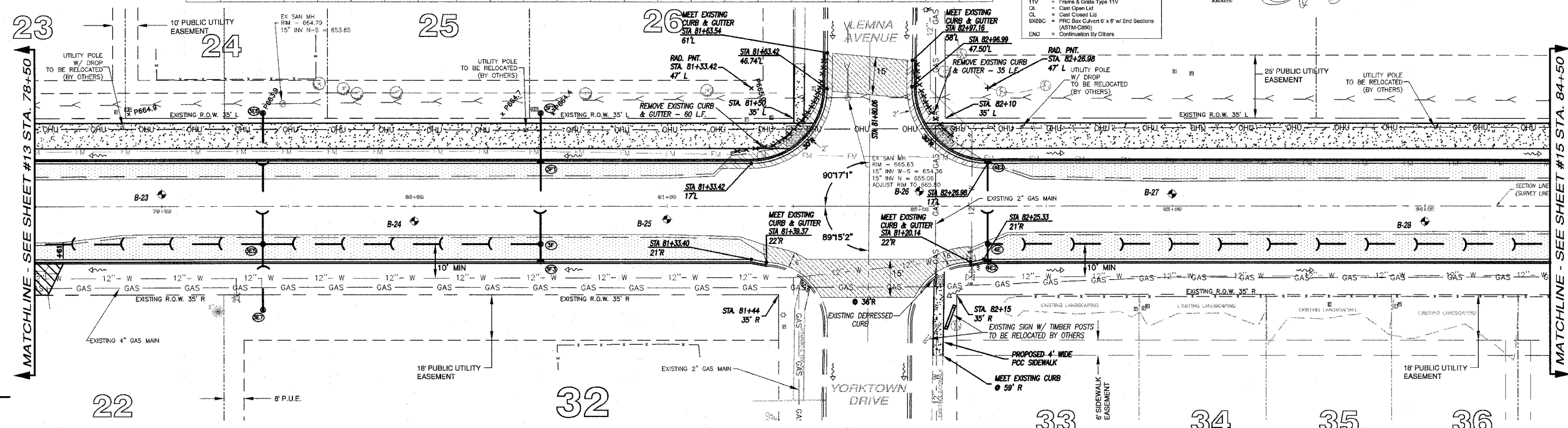
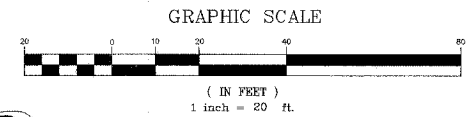
STORM SEWER STRUCTURES & PIPES

Structure ID	Location	Structure Type	Rim Elev	IDOT Type	Lid	Out Pipe										In Pipe									
						Pipe Segment	Direction	Invert	Pipe Size (in)	Added Spec	Pipe Type	Length (ft)	Slope	Direction	Invert	Pipe Size (in)	Direction	Invert	Pipe Size (in)	Direction	Invert	Pipe Size (in)			
3E5	STA: 79+40 - 15 R	MI-4	665.05	1	CL	3E5-3E	S	658.58	16		2	218	0.20%	W	659.58	12	E	658.60	12	N	660.58	15			
3E6	STA: 79+40 - 37 L	INL-2	663.90	37M		3E6-3E5	E	660.09	12		1	51	1.00%												
3E7	STA: 79+40 - 41 R	INL-2	661.40	37M		3E7-3E5	W	658.85	12		1	25	1.00%												
3F	STA: 80+50 - 15 R	INL-3	664.72	1	CL	3F-3E5	S	661.13	15		1	109	0.50%	W	661.15	12	E	661.51	12						
3F1	STA: 80+50 - 18 L	INL-3	664.75	11		3F1-3F	E	661.47	12		1	32	1.00%	NW	661.49	12									
3F2	STA: 80+50 - 37 L	INL-2	664.40	37M		3F2-3F1	SE	661.68	12		1	19	1.00%												
3F3	STA: 80+50 - 22 R	INL-2	664.65	11		3F3-3F	W	661.57	12		1	6	1.00%												
4E	STA: 82+27 - 15 R	INL-3	665.60	1	CL	4E-4D	N	662.25	12		1	272	0.50%	W	662.27	12	E	662.34	12						
4E1	STA: 82+27 - 18 L	INL-2	665.45	11		4E1-4E	E	662.59	12		1	32	1.00%												
4E2	STA: 82+27 - 22 R	INL-2	665.40	11		4E2-4E	NW	662.40	12		1	6	1.00%												

STORM STRUCTURE LEGEND

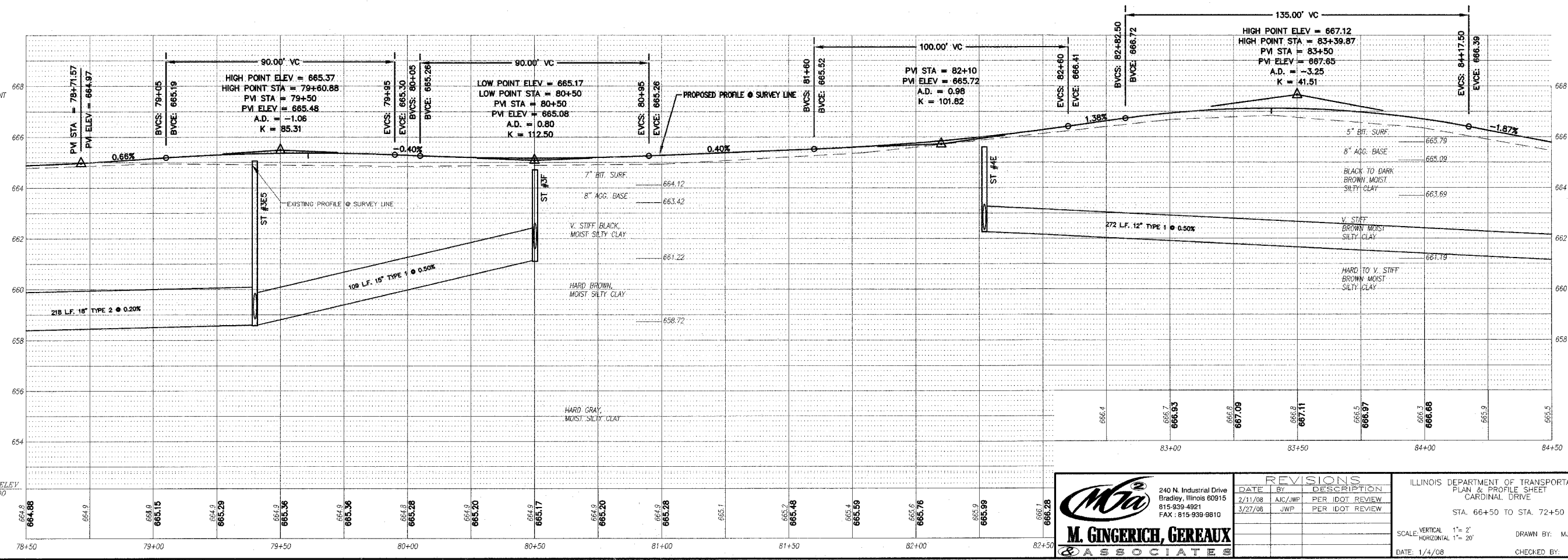
- EXMH = Existing manhole
- FES = PRC Flared End Section
- INL-2 = Inlet Type A, 2' Dia
- INL-3 = Inlet Type A, 2' Dia (Special)
- CB-4 = Catch Basin Type A, 4' Dia
- CB-3 = Catch Basin Type A, 3' Dia
- MI-4 = Manhole Type A, 4' Dia
- MI-5 = Manhole Type A, 5' Dia
- MI-6 = Manhole Type A, 6' Dia
- MI-7 = Manhole Type A, 7' Dia
- RES-6 = Rectangular Catch Basin, 6' Dia
- TEE = RCP Inlet Tee
- INL-SP = Inlet Type A (Special)
- TIE = Connected to pipe
- CUT = Connected to Box Culvert & out pipe flush
- 1 = Frame & Lid Type 1
- 37M = Grate Type 37M
- 11 = Frame & Grate Type 11
- 11V = Frame & Grate Type 11V
- CL = Cast Open Lid
- CL = Cast Closed Lid
- SA8BC = PRC Box Culvert 6' x 6' w/ End Sections (ASTM-C206)
- END = Continuation by Others

F.A.U. RTE.	SECTION	COUNTY	TOTAL SHEETS	SHEET NO.
6208	07-00093-00-RP	KANKAKEE	43	14
MG2A# M2-096			CONTRACT NO.: 87342	



LEGEND

- PAVEMENT WIDENING
- PAVEMENT REMOVAL
- BUTT JOINT
- PROPOSED STORM SEWER
- PROPOSED STORM STRUCTURE ID
- PROPOSED DRIVEWAY REPLACEMENT



**M. GINGERICH, GERAUX & ASSOCIATES**

240 N. Industrial Drive  
Bradley, Illinois 60915  
815-939-4921  
FAX: 815-939-9810

REVISIONS

DATE	BY	DESCRIPTION
2/11/08	AJC/JWP	PER IDOT REVIEW
3/27/08	JWP	PER IDOT REVIEW

ILLINOIS DEPARTMENT OF TRANSPORTATION  
PLAN & PROFILE SHEET  
CARDINAL DRIVE  
STA. 66+50 TO STA. 72+50

SCALE: VERTICAL 1" = 2'  
HORIZONTAL 1" = 20'

DATE: 1/4/08

DRAWN BY: MJU/AJC  
CHECKED BY: JWP