

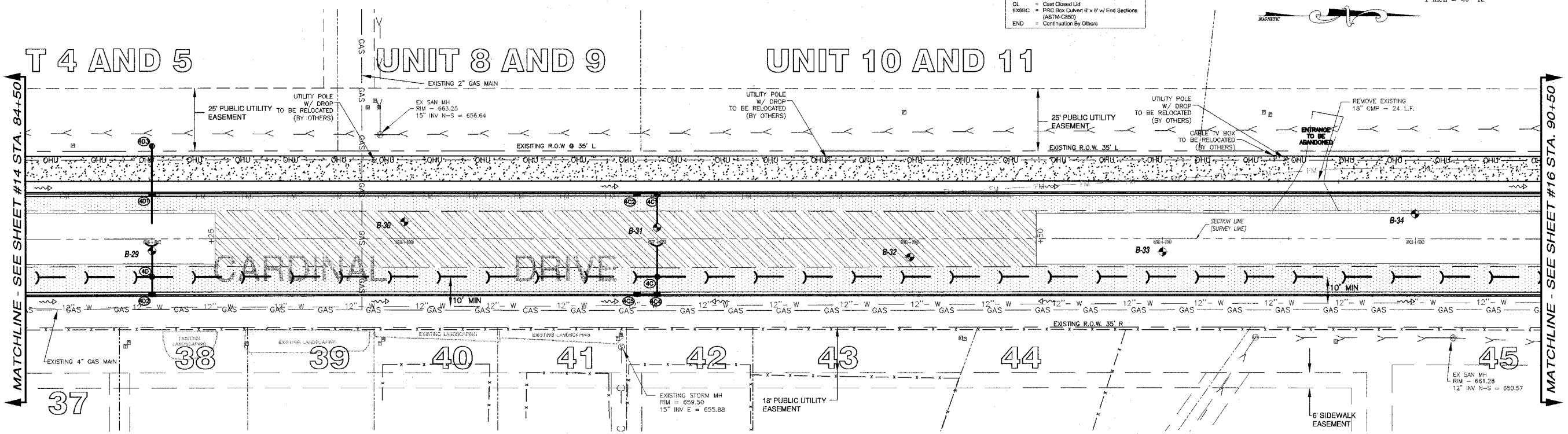
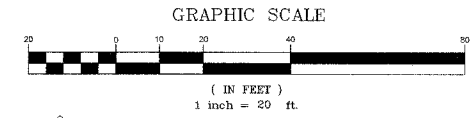
STORM SEWER STRUCTURES & PIPES

Structure ID	Location	Structure Information			Out Pipe				In Pipe													
		Type/Ø	Rim Elev	IDOT Type Fr	Lid	Pipe Segment	Direction	Invert	Pipe Size (in)	Added Spec	Pipe Type	Length (ft)	Slope	Direction	Invert	Pipe Size (in)	Direction	Invert	Pipe Size (in)			
4C	STA: 87+00 - 15 R	MH-4	661.15	1	CL	4C-4B	N	657.88	18		398	0.50%	W	657.90	12	E	657.90	12	S	657.90	12	
4C1	STA: 87+00 - 18 L	INL-2	661.05	11		4C1-4C	E	658.22	12		32	1.00%	S	658.24	12							
4C2	STA: 86+92 - 18 L	INL-2	661.05	11		4C2-4C1	N	658.31	12		7	1.00%										
4C4	STA: 87+00 - 22 R	INL-3	660.95	11		4C4-4C	W	657.96	12		6	1.00%	S	657.98	12							
4C5	STA: 86+92 - 22 R	INL-2	660.95	11		4C5-4C4	N	658.05	12		7	1.00%										
4D	STA: 85+00 - 15 R	INL-3	664.50	1	CL	4D-4C	N	660.87	12		198	1.50%	W	661.17	12	E	661.34	12	S	660.89	12	
4D1	STA: 85+00 - 18 L	INL-3	664.50	11		4D1-4D	E	661.49	12		32	1.00%	W	661.51	12							
4D2	STA: 85+00 - 22 R	INL-2	664.40	11		4D2-4D	W	661.40	12		6	1.00%										
4D3	STA: 85+00 - 37 L	INL-2	664.30	37M		4D3-4D1	E	661.70	12		19	1.00%										

STORM STRUCTURE LEGEND

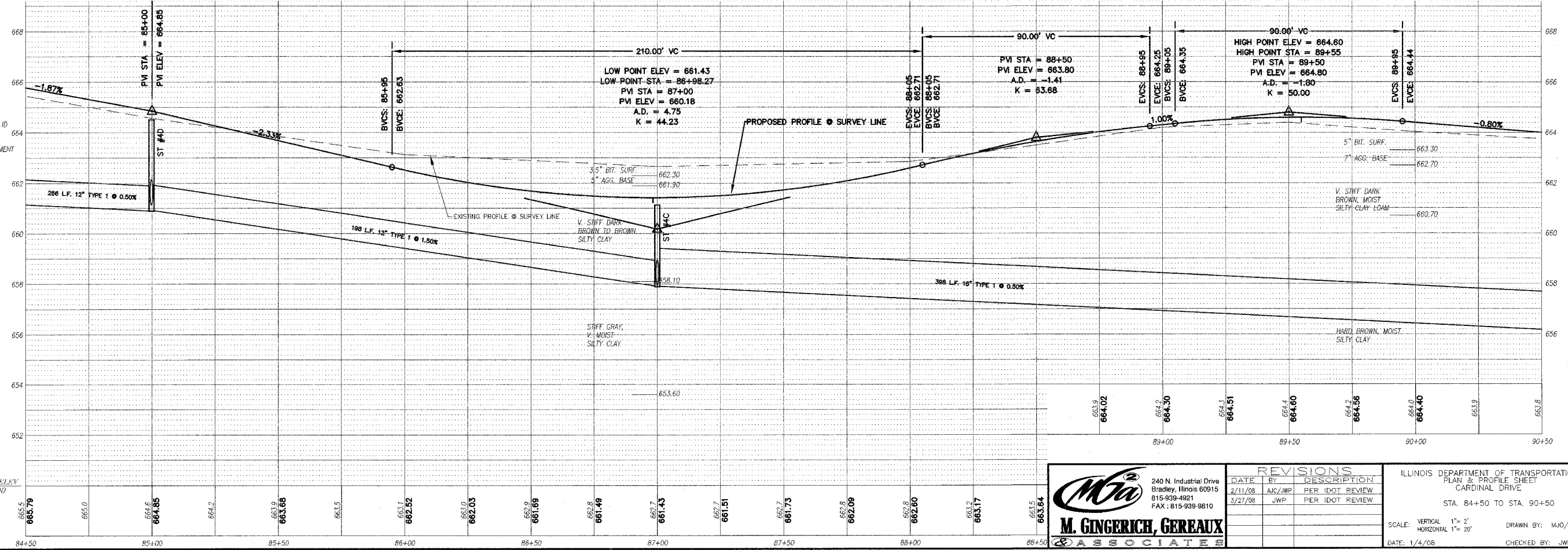
- EXM = Existing manhole
- FES = PRC Flared End Section
- INL-2 = Inlet Type A, 2' Dia
- INL-SP = Inlet Type A, 2' Dia (Special)
- INL-3 = Inlet Type B, 3' Dia
- CB-4 = Catch Basin Type A, 4' Dia
- CB-5 = Catch Basin Type A, 5' Dia
- MH-4 = Manhole Type A, 4' Dia
- MH-5 = Manhole Type A, 5' Dia
- MH-7 = Manhole Type A, 7' Dia
- RES-6 = Resistor GASIN, 6' Dia
- TEF = RCP Inlet Tee
- INL-SP = Inlet Type A (Special)
- TIE = Connect to pipe
- CUT = Connect to Box Culvert & cut pipe flush
- STM = Gate Type STM
- 11 = Frame & Grate Type 11
- 11V = Frame & Grate Type 11V
- CL = Cast Open Lid
- CL = Cast Closed Lid
- EX88C = PRC Box Culvert 8' x 8' w/ End Sections (ASTM A895)
- END = Continuation By Others

F.A.U. RTE.	SECTION	COUNTY	TOTAL SHEETS	SHEET NO.
6208	07-00093-00-RP	KANKAKEE	43	15
MG2A# M2-096		CONTRACT NO.: 87342		



LEGEND

- PAVEMENT WIDENING
- PAVEMENT REMOVAL
- BUTT JOINT
- PROPOSED STORM SEWER
- PROPOSED STORM STRUCTURE ID
- PROPOSED DRIVEWAY REPLACEMENT



**M. GINGERICH, GERAUX & ASSOCIATES**  
 240 N. Industrial Drive  
 Bradley, Illinois 60915  
 815-939-4921  
 FAX: 815-939-9810

REVISIONS

DATE	BY	DESCRIPTION
2/11/08	AJC/WJP	PER IDOT REVIEW
3/27/08	JWP	PER IDOT REVIEW

ILLINOIS DEPARTMENT OF TRANSPORTATION  
 PLAN & PROFILE SHEET  
 CARDINAL DRIVE  
 STA. 84+50 TO STA. 90+50  
 SCALE: VERTICAL 1" = 2'  
 HORIZONTAL 1" = 20'  
 DATE: 1/4/08  
 DRAWN BY: MJO/AJC  
 CHECKED BY: JWP