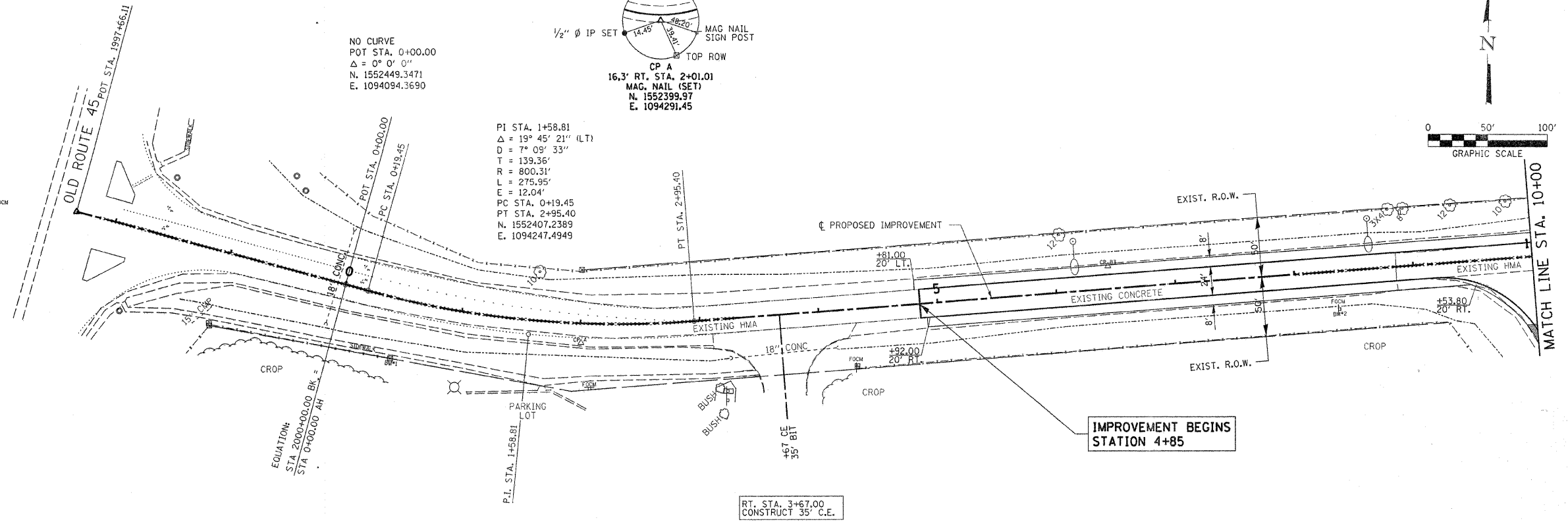


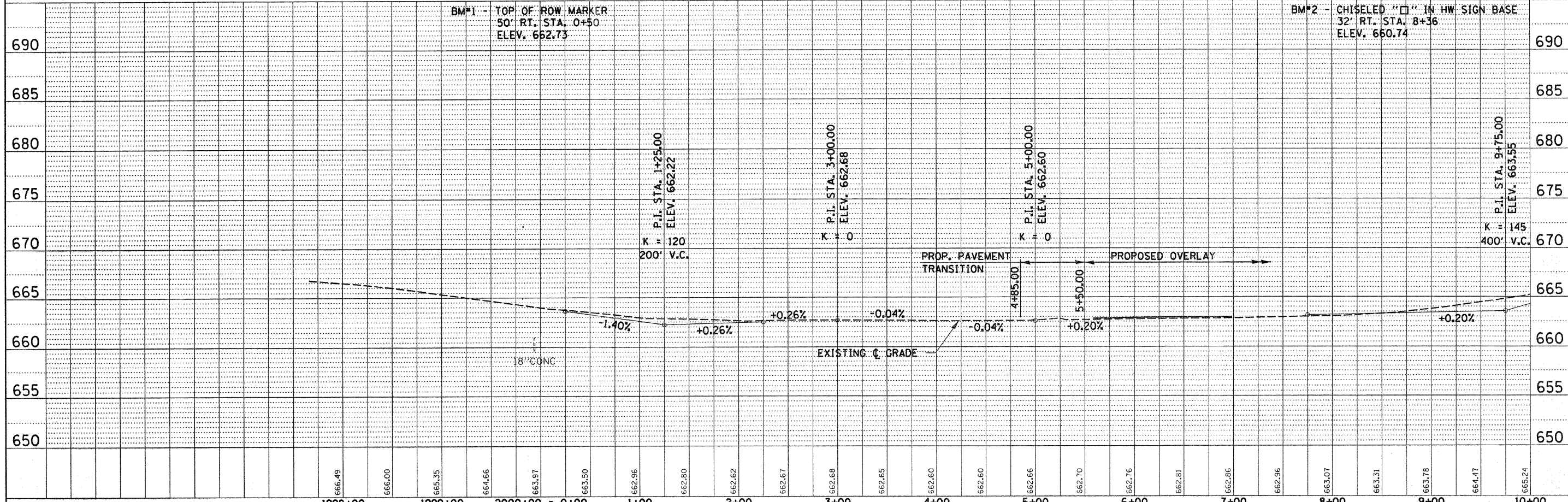
NO CURVE  
 POT STA. 0+00.00  
 $\Delta = 0^\circ 0' 0''$   
 N. 1552449.3471  
 E. 1094094.3690

PI STA. 1+58.81  
 $\Delta = 19^\circ 45' 21''$  (LT)  
 $D = 7^\circ 09' 33''$   
 $T = 139.36'$   
 $R = 800.31'$   
 $L = 275.95'$   
 $E = 12.04'$   
 PC STA. 0+19.45  
 PT STA. 2+95.40  
 N. 1552407.2389  
 E. 1094247.4949



IMPROVEMENT BEGINS  
 STATION 4+85

RT. STA. 3+67.00  
 CONSTRUCT 35' C.E.



BM#1 - TOP OF ROW MARKER  
 50' RT. STA. 0+50  
 ELEV. 662.73

BM#2 - CHISELED "X" IN HW SIGN BASE  
 32' RT. STA. 8+36  
 ELEV. 660.74

P.I. STA. 1+25.00  
 ELEV. 662.22  
 200' V.C.

P.I. STA. 3+00.00  
 ELEV. 662.68

P.I. STA. 5+00.00  
 ELEV. 662.60

P.I. STA. 9+75.00  
 ELEV. 663.55  
 400' V.C.

DATE	
BY	
PLAN	
SURVEYED	CHECKED
NOTE BOOK	ALIGNED
NO.	FILED
	FILED

DATE	
BY	
PROFILE	
SURVEYED	CHECKED
NOTE BOOK	ALIGNED
NO.	FILED
	FILED

FILE NAME = 46002-shr-pp01.dgn	USER NAME =	DESIGNED -	REVISED -	STATE OF ILLINOIS DEPARTMENT OF TRANSPORTATION	HAMPTON, LENZINI & RENWICK, INC. CIVIL & STRUCTURAL ENGINEERS LAND SURVEYORS	PLAN & PROFILE F.A.S. 321 / CH 4	F.A.S. SECTION COUNTY TOTAL SHEETS SHEET NO. 321 05-00205-02-RS IROUOIS 76 9
PLOT SCALE =	PLOT DATE = 5/13/2008	DRAWN -	REVISED -	SCALE:	SHEET NO. OF SHEETS	STA. 4+85.00 TO STA. 10+00.00	CONTRACT NO. 87363
		CHECKED -	REVISED -				FED. ROAD DIST. NO. ILLINOIS FED. AID PROJECT
		DATE -	REVISED -				