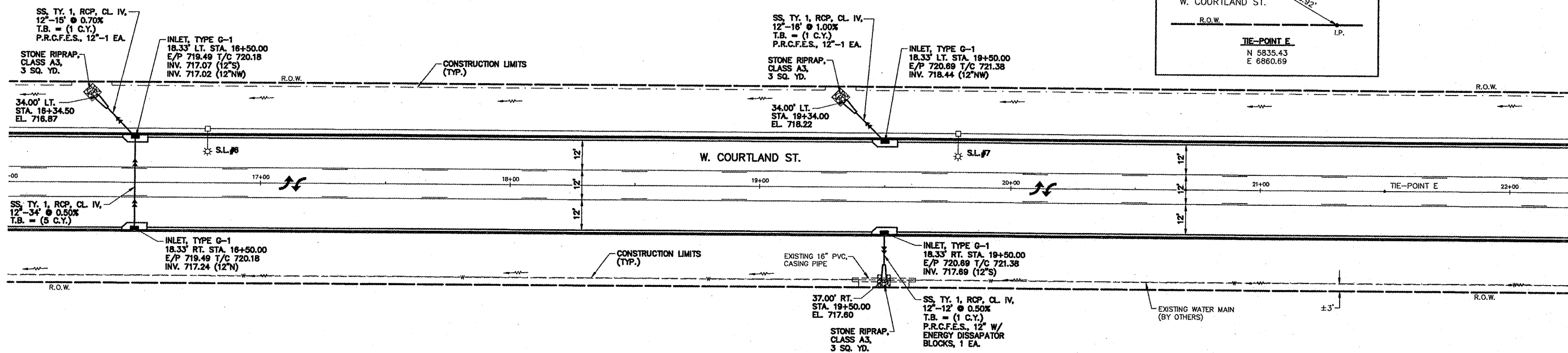
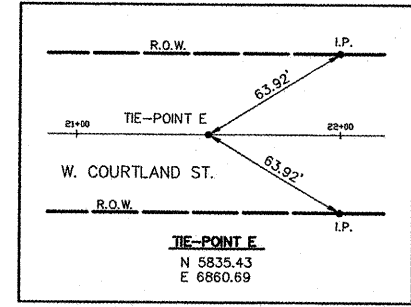


NOTE: ALL EXIST. UTILITIES ARE APPROXIMATE AND SHOWN FOR INFORMATION ONLY AND ARE TO BE VERIFIED IN THE FIELD BY THE CONTRACTOR.
 STORM SEWER QUANTITIES ARE MEASURED FROM INSIDE WALL OF STRUCTURE TO INSIDE WALL OF STRUCTURE.

ROUTE NO.	SECTION	COUNTY	TOTAL SHEETS	THIS SHEET
F.A.U. 0755	*	TAZEWELL	39	7
FED. ROAD DIST. NO. 7		ILLINOIS	PROJECT M-5093-112	
*04-00114-00-PV CONTRACT NO. 89351				



SCALES:
 1" = 20' HOR
 1" = 2' VER

BENCH MARK: HALF BOLT ON SECOND STEEL POWER POLE, NORTH OF W. JACKSON ST. EL. 716.62

