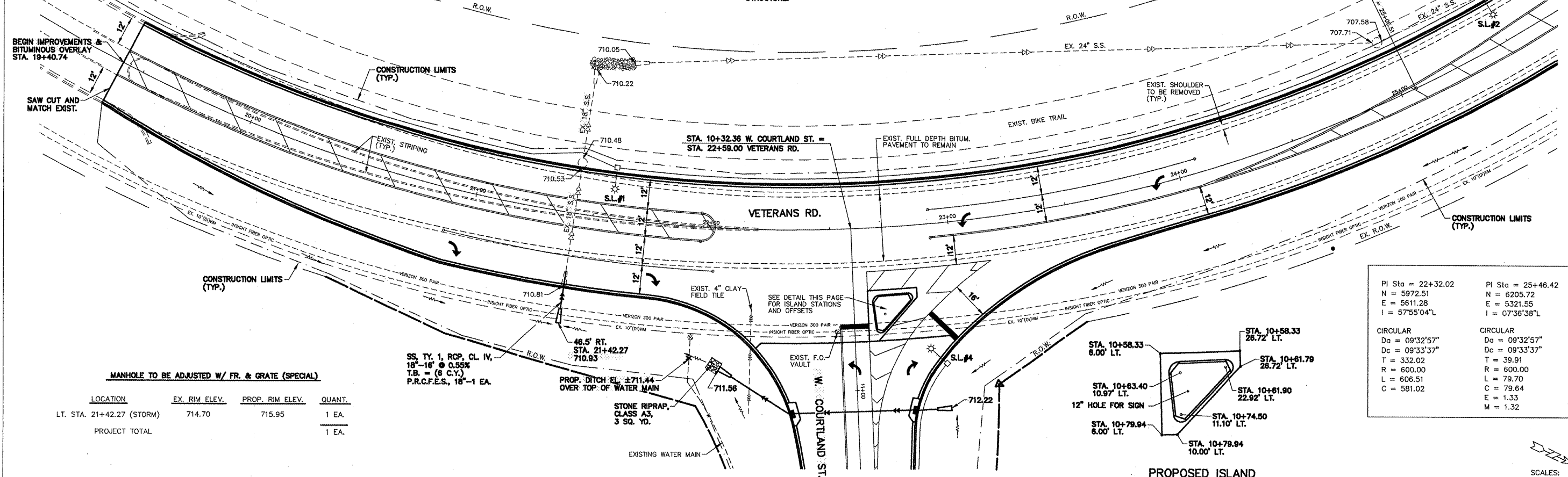


ROUTE NO.	SECTION	COUNTY	TOTAL SHEETS	SHEET
F.A.U. 6755	*	TAZEWELL	39	12
FED. ROAD DIST. NO. 7				
*04-0014-00-PV				
CONTRACT NO. 89351				

NOTE: ALL EXIST. UTILITIES ARE APPROXIMATE AND SHOWN FOR INFORMATION ONLY AND ARE TO BE VERIFIED IN THE FIELD BY THE CONTRACTOR.
 STORM SEWER QUANTITIES ARE MEASURED FROM INSIDE WALL OF STRUCTURE TO INSIDE WALL OF STRUCTURE.

BEGIN IMPROVEMENTS & BITUMINOUS OVERLAY STA. 19+40.74

SAW CUT AND MATCH EXIST.



MANHOLE TO BE ADJUSTED W/ FR. & GRATE (SPECIAL)

LOCATION	EX. RIM ELEV.	PROP. RIM ELEV.	QUANT.
LT. STA. 21+42.27 (STORM)	714.70	715.95	1 EA.
PROJECT TOTAL			1 EA.

PI Sta = 22+32.02	PI Sta = 25+46.42
N = 5972.51	N = 6205.72
E = 5811.28	E = 5321.55
I = 57°55'04\"/>	

CIRCULAR	CIRCULAR
Da = 09°32'57\"/>	

PROPOSED ISLAND STATION & OFFSETS

SCALES:
 1" = 20' HOR
 1" = 2' VER

