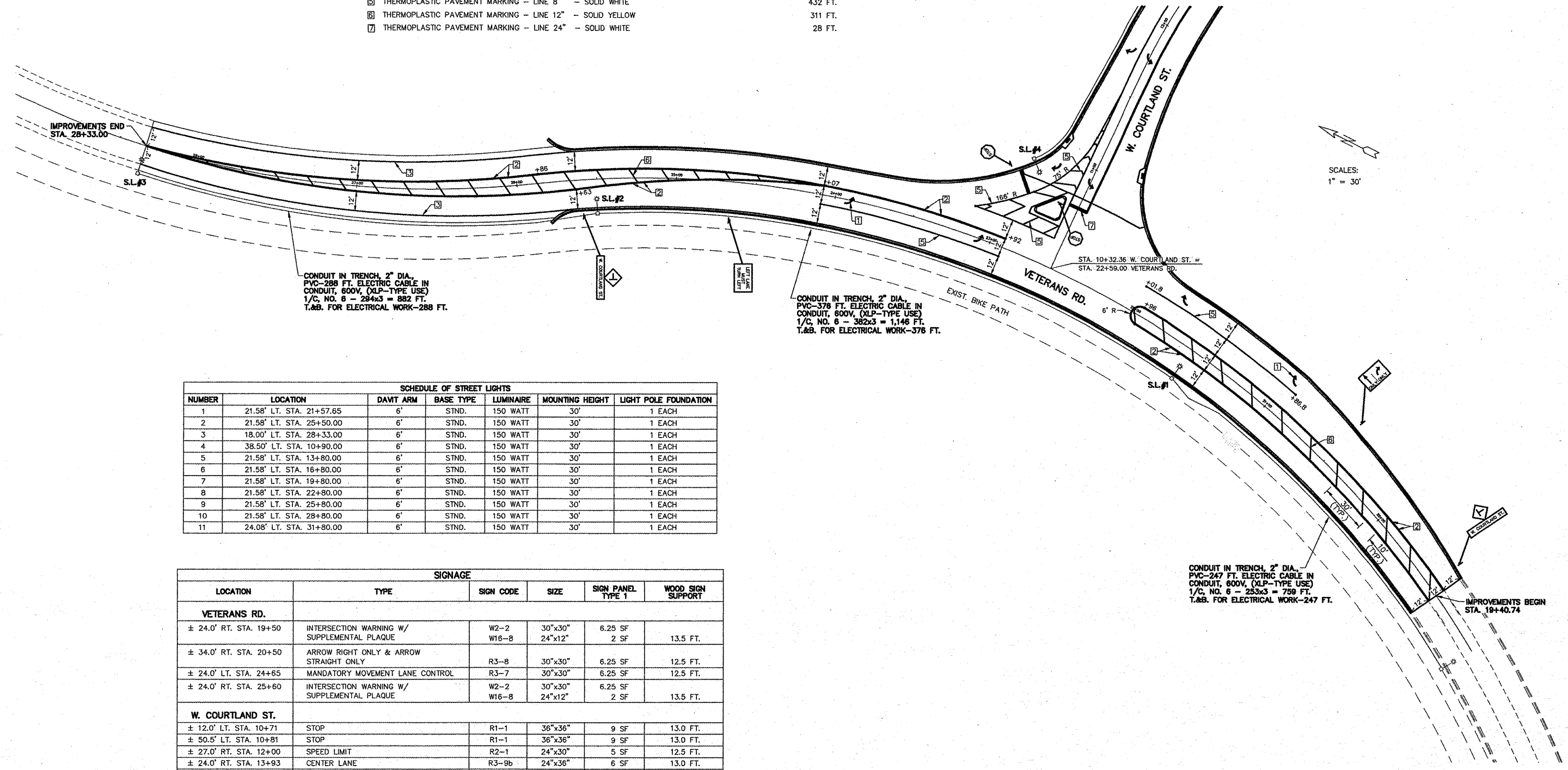


PAVEMENT MARKING LEGEND & QUANTITIES - VETERANS RD.
STA. 19+40.74 TO STA. 28+33.00

- | | | |
|---|--|-----------|
| 1 | HEAT FUSED PREFORMED THERMOPLASTIC PAVEMENT MARKING - LETTERS AND SYMBOLS, WHITE | 62.4 S.F. |
| 2 | THERMOPLASTIC PAVEMENT MARKING - LINE 4" - SOLID YELLOW | 2,980 FT. |
| 3 | THERMOPLASTIC PAVEMENT MARKING - LINE 4" - SOLID WHITE | 540 FT. |
| 4 | THERMOPLASTIC PAVEMENT MARKING - LINE 4" - SKIP DASH YELLOW | 0 FT. |
| 5 | THERMOPLASTIC PAVEMENT MARKING - LINE 8" - SOLID WHITE | 432 FT. |
| 6 | THERMOPLASTIC PAVEMENT MARKING - LINE 12" - SOLID YELLOW | 311 FT. |
| 7 | THERMOPLASTIC PAVEMENT MARKING - LINE 24" - SOLID WHITE | 28 FT. |



SCHEDULE OF STREET LIGHTS						
NUMBER	LOCATION	DAVIT ARM	BASE TYPE	LUMINAIRE	MOUNTING HEIGHT	LIGHT POLE FOUNDATION
1	21.58' LT. STA. 21+57.65	6'	STND.	150 WATT	30'	1 EACH
2	21.58' LT. STA. 25+50.00	6'	STND.	150 WATT	30'	1 EACH
3	18.00' LT. STA. 28+33.00	6'	STND.	150 WATT	30'	1 EACH
4	38.50' LT. STA. 10+90.00	6'	STND.	150 WATT	30'	1 EACH
5	21.58' LT. STA. 13+80.00	6'	STND.	150 WATT	30'	1 EACH
6	21.58' LT. STA. 16+80.00	6'	STND.	150 WATT	30'	1 EACH
7	21.58' LT. STA. 19+80.00	6'	STND.	150 WATT	30'	1 EACH
8	21.58' LT. STA. 22+80.00	6'	STND.	150 WATT	30'	1 EACH
9	21.58' LT. STA. 25+80.00	6'	STND.	150 WATT	30'	1 EACH
10	21.58' LT. STA. 28+80.00	6'	STND.	150 WATT	30'	1 EACH
11	24.08' LT. STA. 31+80.00	6'	STND.	150 WATT	30'	1 EACH

SIGNAGE					
LOCATION	TYPE	SIGN CODE	SIZE	SIGN PANEL TYPE 1	WOOD SIGN SUPPORT
VETERANS RD.					
± 24.0' RT. STA. 19+50	INTERSECTION WARNING W/ SUPPLEMENTAL PLAQUE	W2-2 W16-8	30"x30" 24"x12"	6.25 SF 2 SF	13.5 FT.
± 34.0' RT. STA. 20+50	ARROW RIGHT ONLY & ARROW STRAIGHT ONLY	R3-8	30"x30"	6.25 SF	12.5 FT.
± 24.0' LT. STA. 24+65	MANDATORY MOVEMENT LANE CONTROL	R3-7	30"x30"	6.25 SF	12.5 FT.
± 24.0' RT. STA. 25+80	INTERSECTION WARNING W/ SUPPLEMENTAL PLAQUE	W2-2 W16-8	30"x30" 24"x12"	6.25 SF 2 SF	13.5 FT.
W. COURTLAND ST.					
± 12.0' LT. STA. 10+71	STOP	R1-1	36"x36"	9 SF	13.0 FT.
± 50.5' LT. STA. 10+81	STOP	R1-1	36"x36"	9 SF	13.0 FT.
± 27.0' RT. STA. 12+00	SPEED LIMIT	R2-1	24"x30"	5 SF	12.5 FT.
± 24.0' RT. STA. 13+93	CENTER LANE	R3-9b	24"x36"	6 SF	13.0 FT.
± 24.0' LT. STA. 14+00	ARROW RIGHT ONLY & ARROW LEFT ONLY	R3-8	30"x30"	6.25 SF	12.5 FT.
± 24.0' LT. STA. 15+00	STOP SIGN AHEAD W/ SUPPLEMENTAL PLAQUE	W3-1a W16-8	36"x36" 24"x12"	9 SF 2 SF	14.0 FT.
± 27.5' LT. STA. 32+00	SPEED LIMIT	R2-1	24"x30"	5 SF	12.5 FT.
± 24.8' RT. STA. 32+00	SPEED LIMIT	R2-1	24"x30"	5 SF	12.5 FT.
± 27.0' LT. STA. 41+00	CENTER LANE	R3-9b	24"x36"	6 SF	13.0 FT.
± 25.0' RT. STA. 41+10	ARROW RIGHT ONLY, ARROW STRAIGHT ONLY & ARROW LEFT ONLY	R3-8b	36"x30"	7.50 SF	12.5 FT.
± 27.0' LT. STA. 42+50	SPEED LIMIT	R2-1	24"x30"	5 SF	12.5 FT.
PROJECT TOTALS				103.75 SF	193.0 FT.