

T.R.	SECTION	COUNTY	TOTAL SHEETS	SHEET NO.
50	04-12112-00-BR 04-10100-00-BR	*	20	1
STA. TO STA.				
FED. ROAD DIST. NO.		ILLINOIS	FED. AID PROJECT	
* CHRISTIAN - SHELBY				

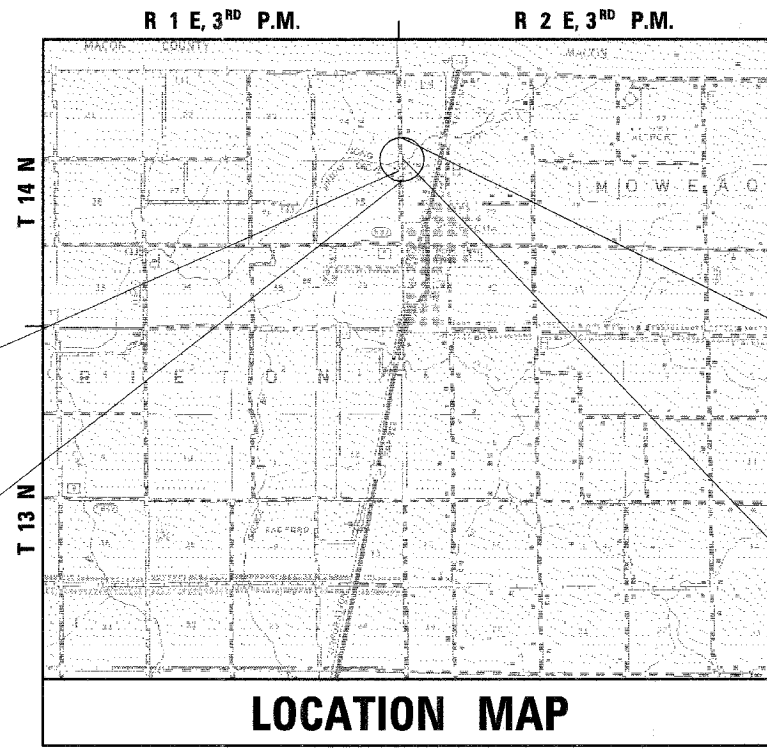
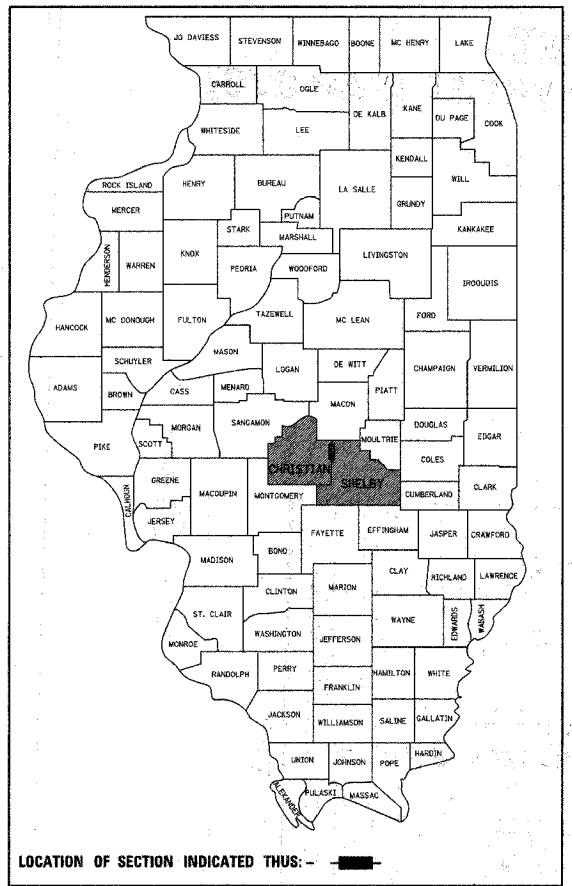
# STATE OF ILLINOIS DEPARTMENT OF TRANSPORTATION PLANS FOR PROPOSED HIGHWAY BRIDGE PROGRAM

**TOWNSHIP ROAD 50 (SHELBY)  
SECTION 04-12112-00-BR CHRISTIAN COUNTY  
SECTION 04-10100-00-BR SHELBY COUNTY  
PRAIRIETON & MOWEAQUA TOWNSHIPS  
STRUCTURE NO.s 011-3407 & 011-3403  
PROJECT NO. BROS-0021 (159)  
JOB NUMBER C-96-237-08**

INDEX OF SHEETS	
SHEET NO.	DESCRIPTION
1	COVER SHEET
2	SUMMARY OF QUANTITIES, SCHEDULE OF QUANTITIES AND GENERAL NOTES
3	TYPICAL SECTIONS, ENTRANCE DETAILS RIPRAP LAYOUT DETAILS & LAYOUT TIES
4	PLAN AND PROFILE
5-10	CROSS SECTIONS
11-15	BRIDGE PLANS-SN 011-3407
16-20	BRIDGE PLANS-SN 011-3403

IDOT HIGHWAY STANDARDS	
000001-05	STANDARD SYMBOLS, ABBREVIATIONS AND PATTERNS
280001-04	TEMPORARY EROSION CONTROL SYSTEMS
515001-02	NAME PLATE FOR BRIDGES
542401	METAL END SECTIONS FOR PIPE CULVERTS
BLR 26	STEEL PLATE BEAM GUARDRAIL (27 1/2" HGT.)
630301-04	SHOULDER WIDENING FOR TYPE 1 (SPECIAL)
635006-02	TERMINAL MARKER PLACEMENT
701301-02	LANE CLOSURE, 2L, 2W, SHORT TIME OPERATIONS
701901	TRAFFIC CONTROL DEVICES
BLR 21-7	TYPICAL APPLICATION OF TRAFFIC CONTROL DEVICES FOR CONSTRUCTION ON RURAL LOCAL HIGHWAYS
BLR 24-1	MAIL BOX TURNOUT FOR LOCAL ROADS
BLR 27	TRAFFIC BARRIER TERMINAL, TYPE 5A

UTILITY CONTACTS		
<b>CONSOLIDATED COMMUNICATIONS.</b> MR. GERRY MEYERS 121 SOUTH 17th STREET MATTOON, IL 61938 (217) 235-3311	<b>SHELBY ELECTRIC COOPERATIVE</b> MR. JIM MATLOCK P.O. BOX 560 SHELBYVILLE, IL 62565 (217) 774-3986	<b>VILLAGE OF MOWEAQUA WATER DEPT.</b> 122 N. MAIN ST. MOWEAQUA, IL 62550 217-768-3436



**STA. 15 + 74.50 - SPECIAL BRIDGE DESIGN**  
1 - SPAN 33" P.P.C. DECK BEAMS ON PILE BENT ABUTMENTS.  
75'-0" BK TO BK OF ABUTMENTS, 73'-0" CLEAR WIDTH, 35° SKEW.  
STRUCTURE NO. 011-3407  
REPLACES 087-3285

**BEGIN IMPROVEMENT STA. 11 + 00**

**END IMPROVEMENT STA. 24 + 15**

**STA. 19 + 55.00 - SPECIAL BRIDGE DESIGN**  
1 - SPAN 33" P.P.C. DECK BEAMS ON PILE BENT ABUTMENTS.  
67'-0" BK TO BK OF ABUTMENTS, 24'-0" CLEAR WIDTH, 0° SKEW.  
STRUCTURE NO. 011-3403  
REPLACES 087-3070

SCALES	
PLAN	0 50 100
PROFILE HORIZ.	0 50 100
PROFILE VERT.	0 5 10
CROSS SECTIONS HORIZ.	0 10 20
CROSS SECTIONS VERT.	0 5 10

FULL SIZE PLANS HAVE BEEN PREPARED USING STANDARD ENGINEERING SCALES, REDUCED SIZED PLANS WILL NOT CONFORM TO STANDARD SCALES. WHEN MAKING MEASUREMENTS ON REDUCED PLANS, THE ABOVE SCALES MAY BE USED.

PLANS PREPARED BY:

**IE Consultants, Inc.**  
6420 South Sixth Street Road  
Springfield, Illinois 62712  
Tel: (217) 529-8027  
Fax: (217) 529-4543  
e-mail: iespringfield@ie-consultants.com

481 W. Boughton Road - Suite 301  
Bolingbrook, Illinois 60440  
Tel: (630) 769-3853  
Fax: (630) 759-4275  
e-mail: iebolingbrook@ie-consultants.com

CONTRACT NO. **93466**

APPROXIMATE SCALE: 1" = 1 MILE  
NET LENGTH OF PROJECT = 1,315.00 FEET 0.249 MILES  
HIGHWAY CLASSIFICATION = LOCAL ROAD  
CURRENT ADT < 150

**DAVID BOOHER**  
REGISTERED PROFESSIONAL ENGINEER OF ILLINOIS  
DATE: 4-2-08  
EXPIRES 11/30/2009

APPROVED 4/3 20 08  
*Craig D. Fure*  
COUNTY ENGINEER, CHRISTIAN COUNTY

APPROVED 4-3 20 08  
*Ed Cratz*  
ROAD COMMISSIONER, PRAIRIETON TOWNSHIP

APPROVED 08 April 20 08  
*S. L. ...*  
COUNTY ENGINEER, SHELBY COUNTY

APPROVED 08 April 20 08  
*Robert ...*  
ROAD COMMISSIONER, MOWEAQUA TOWNSHIP

PASSED APRIL 11 20 08  
*Jim ...*  
DISTRICT SIX ENGINEER OF LOCAL ROADS & STREETS

PASSED April 11, 20 08  
*W.P. ...*  
DISTRICT SIX CONSTRUCTION ENGINEER

Releasing For Bid Based on Limited Review  
APRIL 11 20 08  
*Christine M. Reed*  
DEPUTY DIRECTOR OF HIGHWAYS,  
REGION FOUR ENGINEER  
STATE OF ILLINOIS  
DEPARTMENT OF TRANSPORTATION

THE STATE OF ILLINOIS DEPARTMENT OF TRANSPORTATION

CALL **J.U.L.I.E.** (JOINT UTILITY LOCATING INFORMATION FOR EXCAVATORS)  
48 Hours (2 working days) Before You Dig.  
TOLL FREE: 1 (800) 892-0123

FILE: G:\565027\CD\93466\27CS\_SHT 4/2/2008 5:35:58 PM