

T.R. RTE.	SECTION	COUNTY	TOTAL SHEETS	SHEET NO.
234 A	04-20118-00-BR	SHELBY	24	1

CONTRACT NO. 95557

INDEX OF SHEETS

- 1 TITLE SHEET
- 2-3 DETAILS SHEETS
- 4 PLAN & PROFILE
- 5-6 CROSS SECTIONS
- 7 EROSION CONTROL PLAN
- 8 GENERAL PLAN & ELEVATION
- 9-24 BRIDGE DETAILS

HIGHWAY STANDARDS

- 000001-05 STANDARD SYMBOLS, ABBREVIATIONS AND PATTERNS
- 280001-04 TEMPORARY EROSION CONTROL SYSTEMS
- 635006-02 REFLECTOR AND TERMINAL MARKER PLACEMENT
- 701901 TRAFFIC CONTROL DEVICES
- BLR 21-7 TYPICAL APPLICATION OF TRAFFIC CONTROL DEVICES FOR CONSTRUCTION ON RURAL LOCAL HIGHWAYS

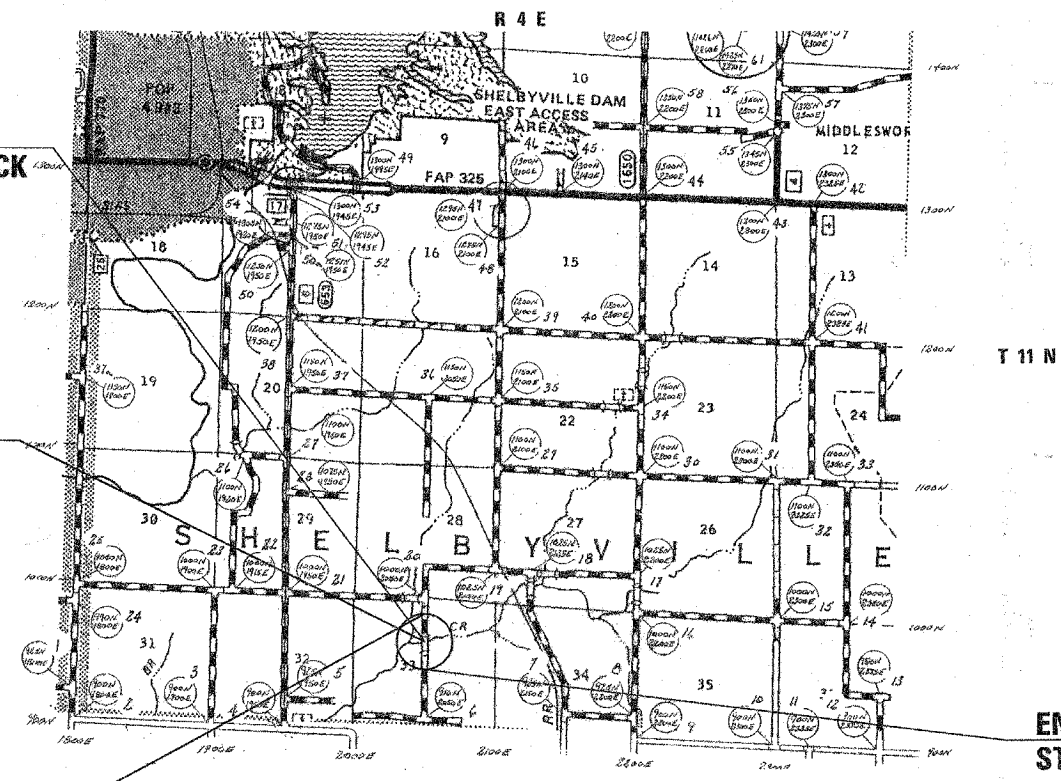
STATE OF ILLINOIS
DEPARTMENT OF TRANSPORTATION
**PLANS FOR PROPOSED
HIGHWAY BRIDGE PROGRAM**

SHELBYVILLE ROAD DISTRICT
SECTION 04-20118-00-BR
PROJECT BROS - 173 (160)
SHELBY COUNTY
T. R. ROUTE 234A OVER JORDAN CREEK TRIB.
JOB NO. C - 97 - 079 - 08
PROPOSED STRUCTURE NO. 087- 3547



EXISTING STRUCTURE STA 54+52
2 SPAN DECK GIRDER, STEEL PAN DECK
WITH ASPHALT SURFACE
ON CLOSED CONCRETE ABUTMENTS
AND A TIMBER PILE BENT PIER
STRUCTURE # - 087-3170

PROPOSED STRUCTURE STA 54+35
3 SPAN PRECAST PRESTRESSED
CONCRETE DECK BEAM BRIDGE
ON PILE BENT ABUTMENTS & PIERS
91'-6" BK-BK 24'-0" FACE TO FACE
0 DEGREE SKEW
STRUCTURE # - 087-3547



BEGIN PROJECT
STA 49+50

PROJECT LOCATION MAP
TOTAL PROJECT LENGTH = 800 FOOT = 0.15 MILES

END PROJECT
STA 57+50

DESIGN INFORMATION

DESIGN CLASSIFICATION: LOCAL ROAD (RURAL)
CURRENT ADT: 75
DESIGN ADT: 100
DESIGN YEAR: 2028
DESIGN SPEED 30 M.P.H.

J.U.L.I.E.
JOINT UTILITY LOCATION INFORMATION FOR EXCAVATION
1-800-892-0123 (TOLL FREE)

PLANS PREPARED BY:
SHELBY CO HWY DEPT
R. R. 3 BOX 38A
SHELBYVILLE IL 62565
217-774-2721

PLANS PREPARED BY:

S. Alan Spesard
S. ALAN SPESARD, COUNTY ENGINEER, PE
ILLINOIS PROFESSIONAL ENGINEER 062-052965
EXPIRES 11-30-09



5/28/2008
DATE

APPROVED *Robin Roberts* May 28 20 08
HIGHWAY COMMISSIONER
SHELBYVILLE TOWNSHIP

APPROVED *S. Alan Spesard* May 28 20 08
COUNTY ENGINEER SHELBY COUNTY

PASSED *Maureen Kostel* 6-2 20 08
District Seven Engineer of
Local Roads and Streets

June 3 20 08
RELEASING FOR
BID BASED ON
LIMITED REVIEW *Pete Z. Dushoff*
DEPUTY DIRECTOR OF HIGHWAYS, REGION ENGINEER
REGION FOUR ENGINEER

STATE OF ILLINOIS
DEPARTMENT OF TRANSPORTATION