

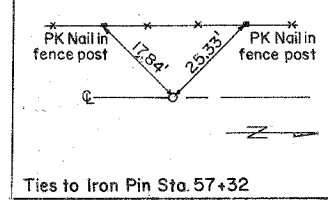
PARCEL No. 4
 RUBY MILLER
 (Part of the S. 40 rods of the SE. 1/4, of the NW. 1/4, of Sect. 33, T. 11N., R. 4E., 3rd P.M.)

Pipe Culvert, C.I.D., Ty. I, 15"
 72 Feet Length
 U.S.F.L. = 30' Lt. Sta. 50+69, Elev. = 596.92
 D.S.F.L. = 30' Lt. Sta. 51+41, Elev. = 589.90

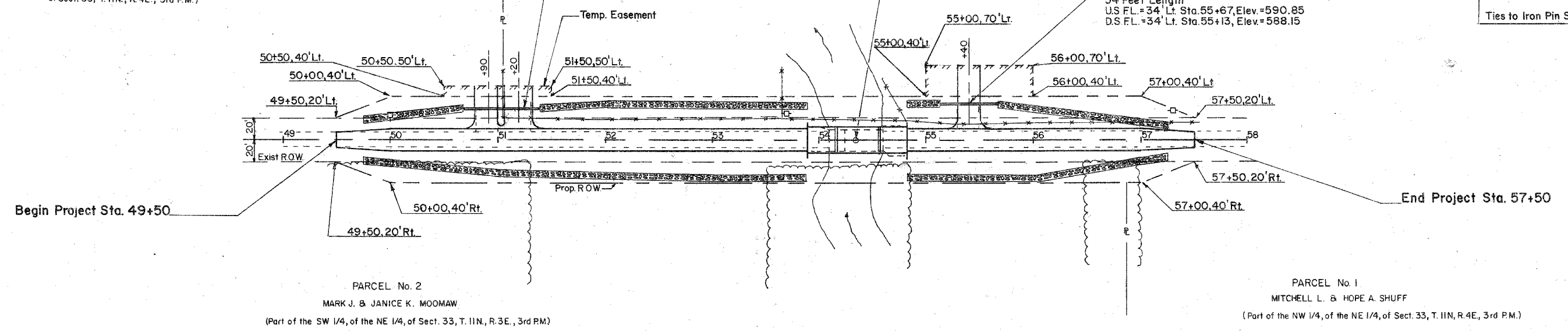
PARCEL No. 3
 CURTIS D. & PAMELA M. RINCKER
 (Part of the E. 1/2, of the NW. 1/4, of Sect. 33, T. 11N., R. 4E., 3rd P.M.)

Sta. 54+35 @ Rdwy at @ Structure
 Proposed Structure = 3 Span Precast
 Prestressed Concrete Deck Beams (17)
 on Pile Bent Abutments and Piers
 91'-6" Bk. - Bk. Abutments, 24'-0" Clear
 Deck Width, Type S-1 Railing, 0° Skew

Pipe Culvert, C.I.D., Ty. I, 15"
 54 Feet Length
 U.S.F.L. = 34' Lt. Sta. 55+67, Elev. = 590.85
 D.S.F.L. = 34' Lt. Sta. 55+13, Elev. = 588.15



PARCEL No. 1
 MITCHELL L. & HOPE A. SHUFF
 (Part of the NW. 1/4, of the NE. 1/4, of Sect. 33, T. 11N., R. 4E., 3rd P.M.)



Note: Transition Existing to Proposed Roadway Width
 Sta. 49+50 to 50+00, Sta. 57+00 to 57+50

