

ROUTE	SECTION	COUNTY	TOTAL SHEETS	SHEET NO.
F.A.S. 1705	08-00110-00-BR	JASPER	15	1
		ILLINOIS	PROJECT BRS-1705(102)	

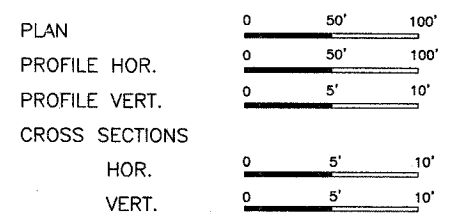
STATE OF ILLINOIS  
DEPARTMENT OF TRANSPORTATION  
DIVISION OF HIGHWAYS  
PLANS FOR PROPOSED  
HIGHWAY BRIDGE PROGRAM  
SECTION 08-00110-00-BR JASPER COUNTY  
PROJECT BRS-1705(102)  
JOB NO. C-97-106-08  
F.A.S. 1705

CONTRACT NO. 95559  
Joint Utility Locating Information for Excavators  
JULIE 1-800-892-0123

INDEX OF SHEETS

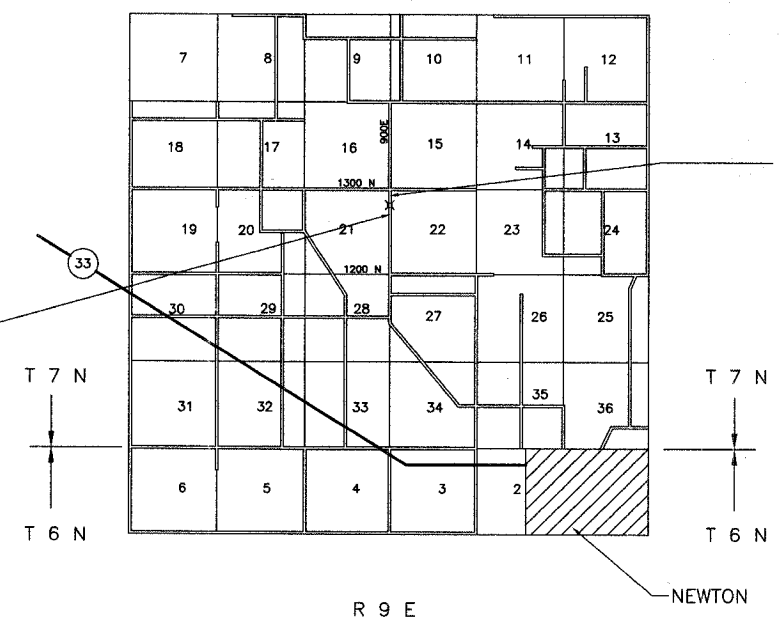
SHEET	ITEM
1	COVER SHEET
2	SUMMARY OF QUANTITIES
3	ROADWAY PLAN AND PROFILE
4	EROSION CONTROL PLAN
5	GENERAL PLAN AND ELEVATION
6	SUPERSTRUCTURE
7	SUPERSTRUCTURE DETAILS
8	STEEL RAILING, TYPE S-1
9	ABUTMENT DETAILS
10	PILE DETAILS
11	BORING LOGS
12-15	CROSS SECTIONS

- STANDARD DRAWINGS
- STANDARD 000001-05
  - STANDARD 280001-04
  - STANDARD 515001-02
  - STANDARD 666001
  - STANDARD 701901
  - STANDARD BLR 21-7
  - STANDARD BLR 22-5
  - STANDARD BLR 23-2
  - STANDARD BLR 26
  - STANDARD BLR 27



SECTION 08-00110-00-BR BEGINS STA. 0+50.00

SINGLE SPAN PRECAST PRESTRESSED CONCRETE DECK BEAM BRIDGE  
61'-6" BK. - BK. ABUTMENTS  
STEEL PILE / SPILLTHROUGH ABUTMENTS  
28' DECK



SECTION 08-00110-00-BR ENDS STA. 9+50.00

FUNCTIONAL CLASSIFICATION - RURAL MAJOR COLLECTOR  
ADT = 375  
DESIGN SPEED = 40 MPH

NET LENGTH SECTION 08-00110-00-BR = 900.00 Ft. = 0.170 Mi.

*Robert A. Charlton*  
Ill. Reg. Prof. Eng. #29175  
License Expires 11/30/09  
5/1/08

CHARLESTON ENGINEERING INC. A CHARLESTON  
105 N. KITCHELL  
P.O. BOX 397  
OLNEY, ILLINOIS 62450  
PH. 618-392-0736

2018 REGISTERED PROFESSIONAL ENGINEER OF ILLINOIS

APPROVED May 9 2008  
*Richard A. Pittman*  
COUNTY ENGINEER

PASSED 5-21 2008  
*Margaret East*  
DISTRICT SEVEN ENGINEER OF LOCAL ROADS AND STREETS

Releasing For Bid Based on Limited Review MAY 27 2008  
*Roger Z. Dinkel*  
DEPUTY DIRECTOR OF HIGHWAYS  
REGION FOUR ENGINEER

STATE OF ILLINOIS  
DEPARTMENT OF TRANSPORTATION