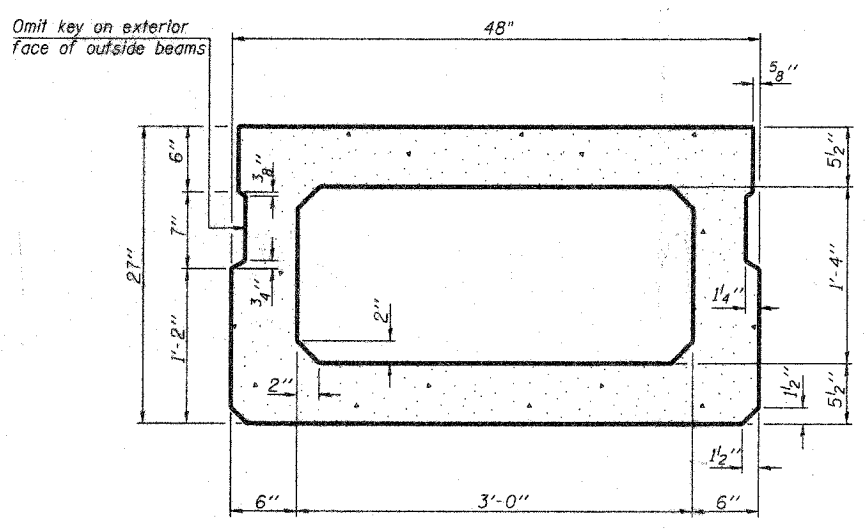
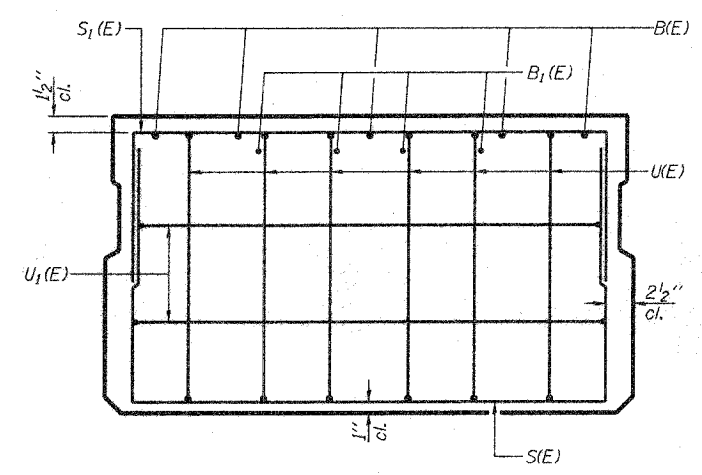


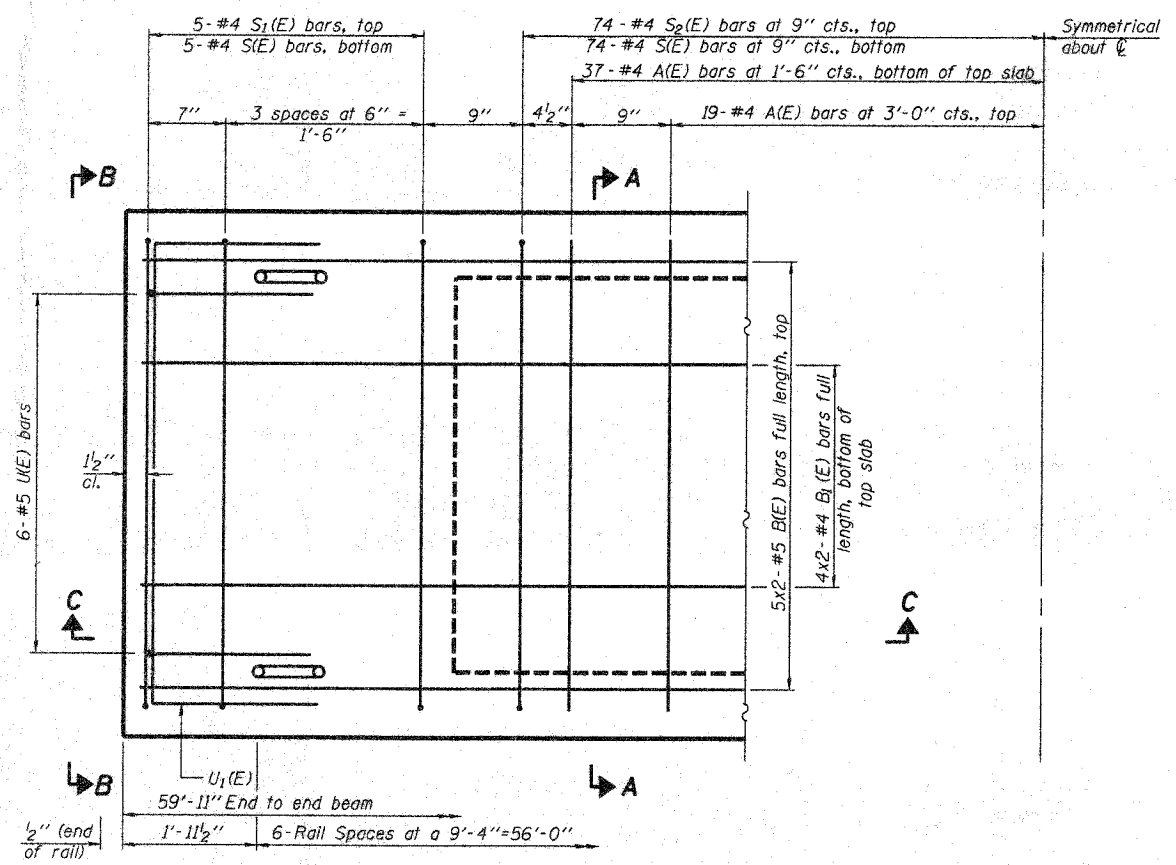
**SECTION C-C**



**SECTION A-A**  
(Showing dimensions)

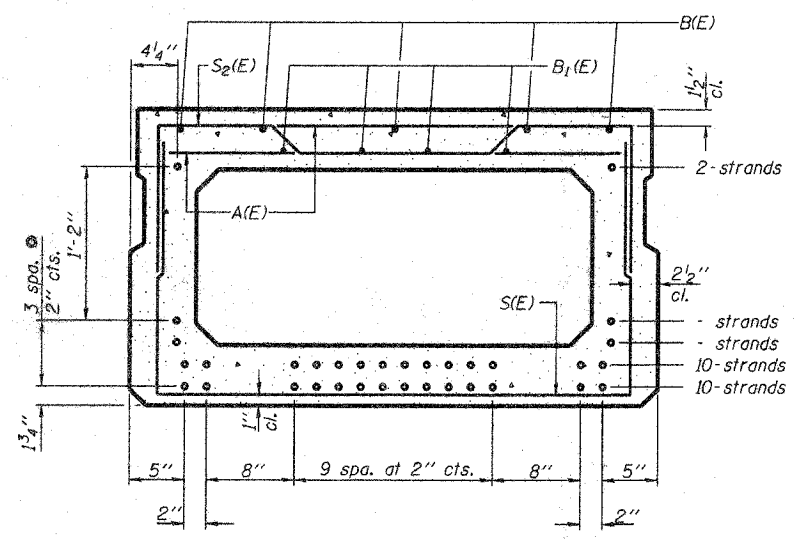


**VIEW B-B**



**PLAN VIEW**

Note: Spacing of S(E) and S2(E) bars may be adjusted up to 4" in the immediate area of the transverse tie diaphragms to miss the block outs for the transverse ties.  
Bars indicated thus 5x2-#5 ect. indicates 5 lines of bars with 2 lengths per line.



**SECTION A-A**

(Showing reinforcement and permissible strand locations)  
Note: Place the number of strands specified in each row symmetrically about the centerline of beam in the permissible strand locations shown.

**BAR LIST**  
**ONE BEAM ONLY**  
(For information only)

Bar	No.	Size	Length	Shape
A(E)	56	#4	3'-7"	—
B(E)	10	#5	30'-11"	—
B1(E)	8	#4	30'-8"	—
S(E)	72	#4	7'-5"	U
S1(E)	10	#4	7'-3"	U
S2(E)	74	#4	7'-6"	U
U(E)	12	#5	4'-6"	U
U1(E)	4	#4	6'-0"	U

Note: See sheet 3 of 7 for additional details and Bill of Material.

**27" X 48" PPC DECK BEAM**

**MIN. BAR LAP**

- #4 1'-8"
- #5 2'-2"

**ESI CONSULTANTS, LTD**  
756 WINDSOR ROAD  
CHARLESTON, IL 61920  
(217) 348-1000  
WWW.ESICONSULTANTSRLTD.COM  
ILLINOIS DEPARTMENT OF PROFESSIONAL REGULATION REGISTRATION #184-003885

**SUPERSTRUCTURE**  
**F.A.S. 1705**  
**OVER TURKEY CREEK**  
**SECTION 08-00110-00-BR**  
**JASPER COUNTY**  
**STATION 5+00**

DATE: 05-07-08 DRAWN BY: ADG CHECKED BY: DF