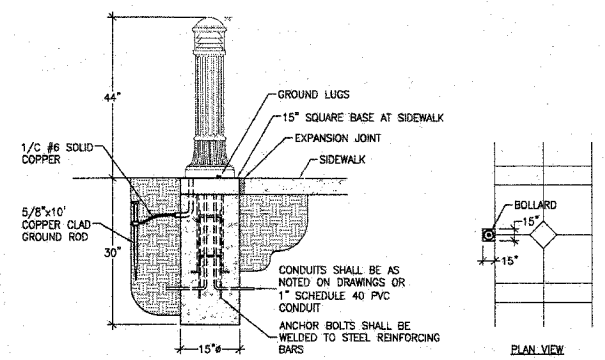
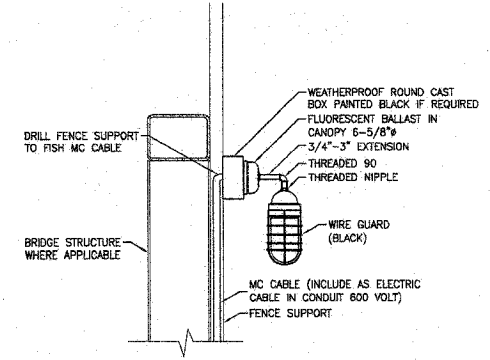


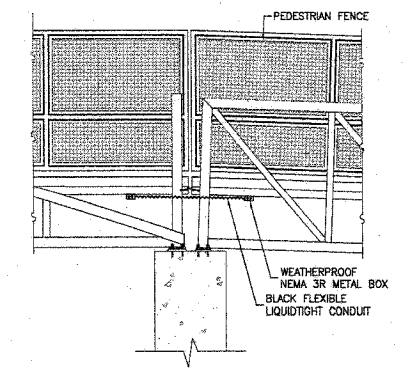
**FIXTURE SA 'IN SIDEWALK' MOUNTING DETAIL**  
NO SCALE



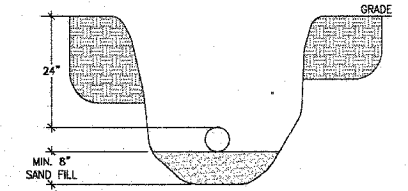
**FIXTURE SA 'NEXT TO SIDEWALK' MOUNTING DETAIL**  
NO SCALE



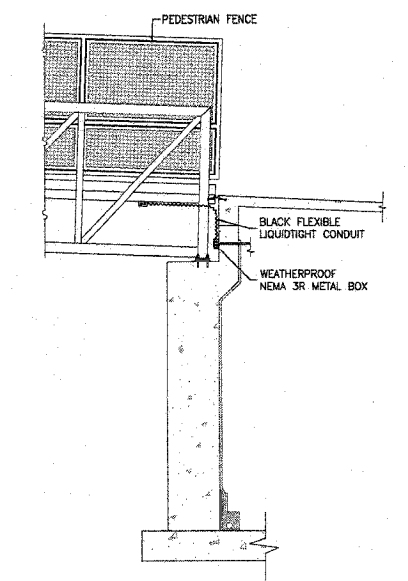
**FIXTURE SB DETAIL**  
NO SCALE



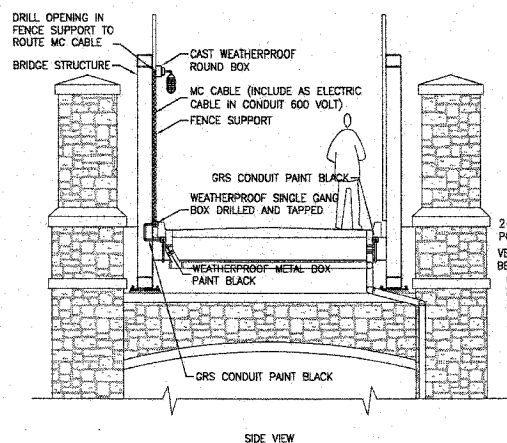
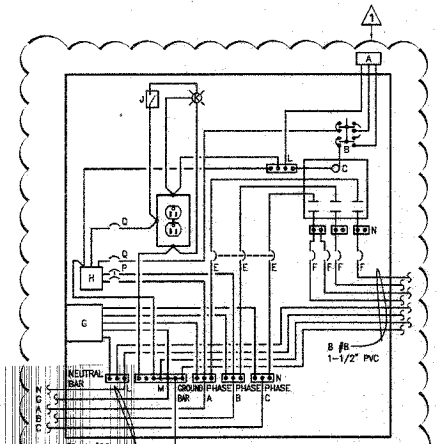
**PIER CONDUIT DETAIL**  
NO SCALE



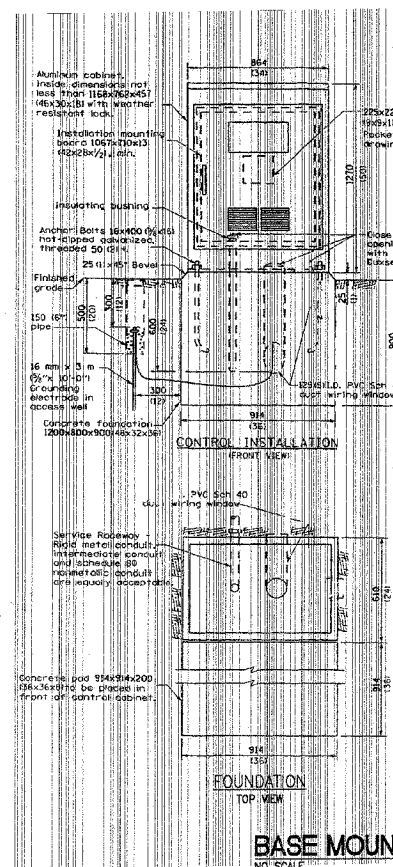
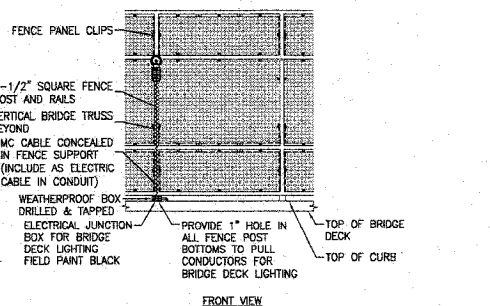
**TYPICAL CONDUIT BURIAL DETAIL**  
NO SCALE  
DO NOT PENETRATE LEVEL FOR INSTALLATION. ALL CONDUIT INSTALLED IN FILL IF LESS THAN 24" BURIAL INSTALL 2" CONCRETE COVER.



**ABUTMENT CONDUIT DETAIL**  
NO SCALE



**FIXTURE SB BRANCH CIRCUIT DETAIL**  
NO SCALE



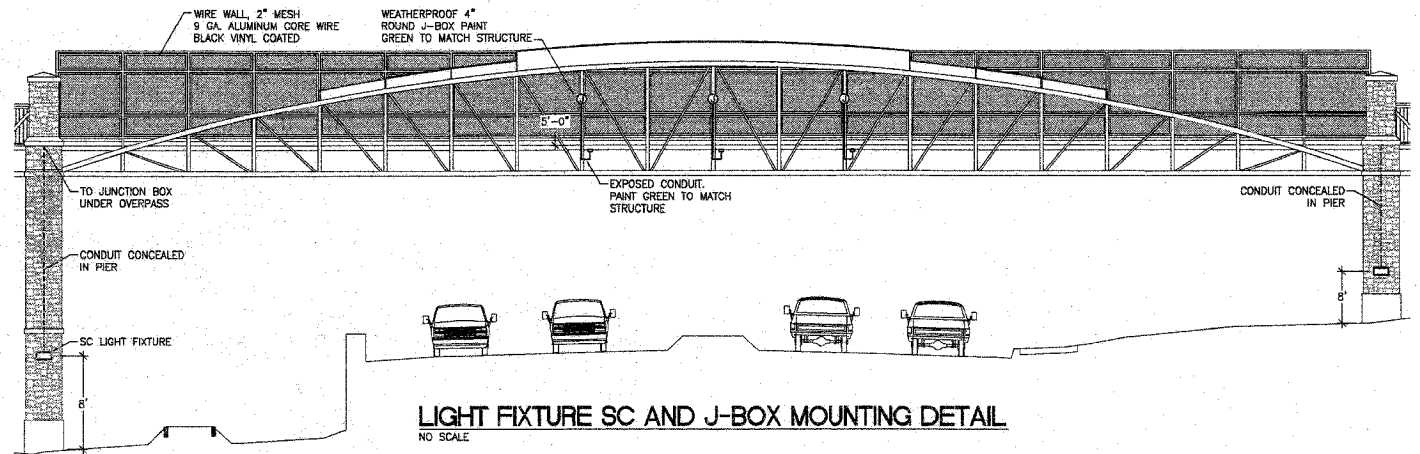
**BASE MOUNTED RELAY CONTROLLER**  
NO SCALE

**MATERIALS:**

- A. PHOTOCELL W/ INTEGRAL SURGE ARRESTER.
- B. THREE POSITION SELECTOR SWITCH HAND/OFF/AUTO.
- C. 100 AMP ELECTRICALLY HELD CONTACTOR, 120 VOLT OPERATING COIL.
- D. 15 AMP SINGLE POLE CIRCUIT BREAKER.
- E. 100 AMP, 3 POLE MAIN CIRCUIT BREAKER, 480 VOLT.
- F. 20 AMP SINGLE POLE BRANCH CIRCUIT BREAKER (TYP.) SPARE C.B. REQUIRED BUT NOT SHOWN, 480 VOLT.
- G. SURGE ARRESTER WITH DISC FUSED.
- H. TRANSFORMER (SEE NOTES) 1 KVA, 240/480 VOLT PRIMARY, 120/240 VOLT SECONDARY, SINGLE PHASE.
- I. GFCI DUPLEX RECEPTACLE.
- J. SINGLE POLE, SINGLE THROW SWITCH.
- K. SHIELDED SECURITY FIXTURE WITH 100W LAMP.
- L. NEUTRAL BAR.
- M. EQUIPMENT GROUND BAR.
- N. TERMINAL BLOCK (TYP.)
- O. 20 AMP, 2 POLE BREAKER, 480 VOLT.
- P. 20 AMP, SINGLE POLE BREAKER, 120 VOLT.

**GENERAL NOTES:**

1. WIRING SHALL BE PANEL BOARD FASHION. ALL BENDS SHALL BE RIGHT ANGLES. ALL RUNS SHALL BE VERTICAL OR PARALLEL TO PANEL BOARD. WIRES SHALL BE GROUPED OR LACED.
2. ALL CONTROL INSTALLATION COMPONENTS SHALL BE U.L. LISTED.
3. RACEWAYS SHALL TERMINATE 75 (3) ABOVE TOP OF CONCRETE FOUNDATION.
4. LABEL EQUIPMENT GROUND BUSS AND NEUTRAL BUSS.
5. ALL DIMENSIONS ARE IN MILLIMETERS (INCHES) UNLESS OTHERWISE SHOWN.



**LIGHT FIXTURE SC AND J-BOX MOUNTING DETAIL**  
NO SCALE

Revised 7-18-08

REVISIONS  
DATE REVISIONS BY

**HORNER & SHIFRIN, INC.**  
ENGINEERS  
5200 OAKLAND AVE. • ST. LOUIS, MO 63110-1490  
314-531-4371 • FAX 314-531-6966  
www.HornerShifrin.com

ALTON, ILLINOIS  
PEDESTRIAN OVERPASS AT LANGDON ST.

DWG. NO. E3  
PEDESTRIAN P-P ALT #1 DWG  
REF. BK 5080 PG 1  
JOB NO. 406924  
DSN. BY: JAB  
DWN. BY: JAB  
CHK. BY: JAB  
DATE: 03/28/08  
SCALE: N/A  
SHEET 20 OF 54