

FOR UTILITY LOCATION PURPOSES, THIS PROJECT IS LOCATED IN THE N.E. AND S.E. QUARTERS OF SECTION 14, TOWNSHIP 5 NORTH, RANGE 10 WEST OF THE THIRD PRINCIPAL MERIDIAN.

AGENCIES KNOWN TO HAVE UNDERGROUND FACILITIES WITHIN THE LIMITS OF THIS IMPROVEMENT ARE SHOWN BELOW (MEMBERS OF JULIE, PHONE (800) 892-0123, ARE INDICATED BY *).

* AMEREN ILE
700 OAKWOOD AVENUE
P.O. BOX 478
ALTON, IL 62002
(618) 463-4043 (GAS)
(618) 463-4051 (ELECTRIC)

CITY OF ALTON
PUBLIC WORKS DEPARTMENT
#2 EMMA L. KAUS LANE
ALTON, IL 62002
(618) 463-3530

* ILLINOIS AMERICAN WATER CO.
4436 INDUSTRIAL DRIVE
P.O. BOX 186
ALTON, IL 62002
(618) 466-2131

STATE OF ILLINOIS DEPARTMENT OF TRANSPORTATION DIVISION OF HIGHWAYS FEDERAL AID HIGHWAY PEDESTRIAN OVERPASS

F.A.P. ROUTE 304 / US 67
SECTION 06-00224-00-BR
PROJECT TE-00D8(109)
CITY OF ALTON
MADISON COUNTY
JOB C-98-392-06

SECTION	COUNTY	TOTAL SHEETS	SHEET NO.
*	MADISON	54	1

FEDERAL AID PROJECT
* 06-00224-00-BR
CONTRACT NO. 97326

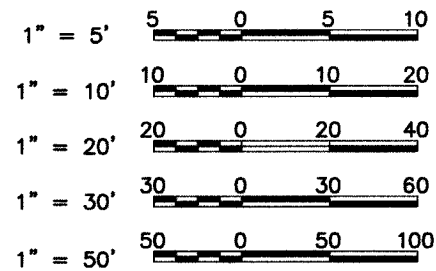
INDEX TO SHEETS

1. COVER SHEET, INDEX TO SHEETS
2. GENERAL NOTES, LEGEND & CONTROL POINTS, HIGHWAY STANDARDS
3. SUMMARY OF QUANTITIES, TYPICAL SECTIONS
4. SCHEDULES OF QUANTITIES
- 5.-6. PLAN AND PROFILE
- 7.-9. TRAFFIC CONTROL PLANS
10. EROSION CONTROL PLAN
11. COMBINED SEWER REPLACEMENT PLAN AND PROFILE
- 12.-13. DETAILED GRADING AND DRAINAGE PLANS
14. DEMOLITION PLAN
15. DELETED
- 16.-17. LANDSCAPING PLANS
- 18.-20. LIGHTING DETAILS
- 21.-46. STRUCTURE PLANS
- 47.-48. DETAILS
49. RAILROAD TRACK PROFILES
- 50.-54A. CROSS SECTIONS

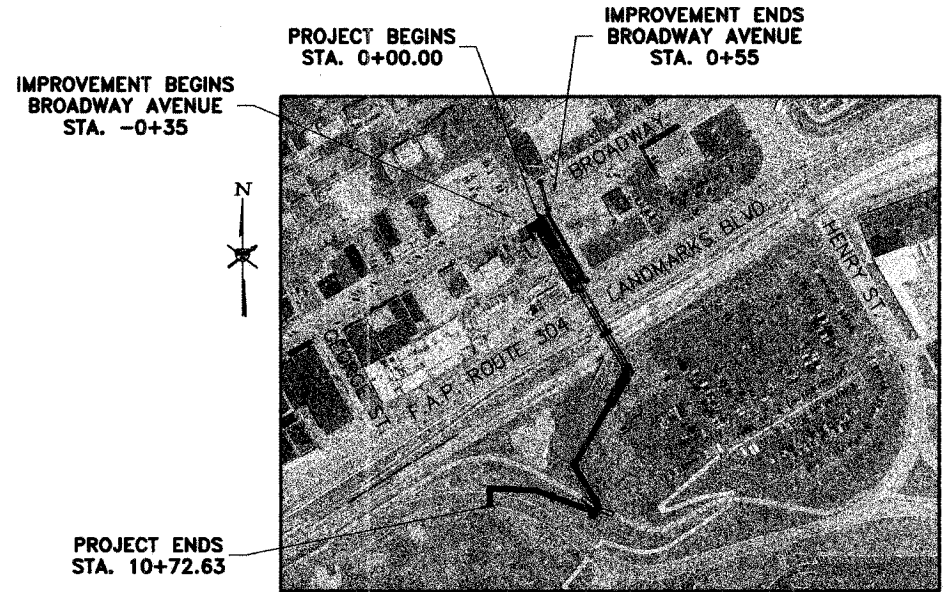
HIGHWAY STANDARDS

SEE SHEET NO. 2

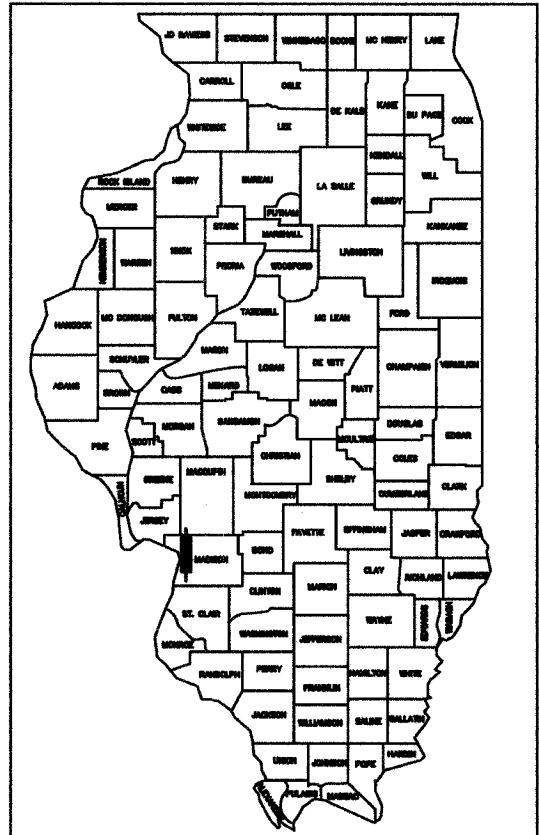
SCALES



FULL SIZE PLANS HAVE BEEN PREPARED USING STANDARD ENGINEERING SCALES. REDUCED SIZED PLANS WILL NOT CONFORM TO STANDARD SCALES. IN MAKING MEASUREMENTS ON REDUCED PLANS THE ABOVE SCALES MAY BE USED.



LATITUDE 38°-53'-21"
LONGITUDE 90°-10'-58"
UPRR MP 257.79; SPRINGFIELD SUBDIVISION
NSRR MP A-0.37; T & E LINE SUBDIVISION
NET LENGTH OF IMPROVEMENT BROADWAY AVENUE = 90 FEET = 0.017 MILES
TOTAL NET LENGTH OF PROJECT = 1,072.63 FEET = 0.203 MILES



LOCATION OF SECTION INDICATED THIS:-

ILLINOIS DEPARTMENT OF TRANSPORTATION

Approved: APR 09 2008
Donna E. Janda
City of Alton, Mayor

Passed: 6/4/08
[Signature]
District #8 Engineer of Local Roads & Streets

Releasing for Bid Based on Limited Review: 6/4/08
[Signature]
Deputy Director of Highways/Region #5 Engineer



Larry D. Anderson

DATE SIGNED 4/09/08
EXPIRATION DATE 11/30/09

SMS ENGINEERS
Sheppard Morgan & Schwaab, Inc.
CONSULTING ENGINEERS & LAND SURVEYORS
216 Market Street
Alton, Illinois 62002
P.O. Box 2
618/482-9755

10 Central Industrial Dr
Northgate Center
Granite City, IL 62040
618/877-8700

S:\land projects\ALTON (40824) (1)dwg\pedestrian Cover Sheet.dwg, 4/3/2008 8:17:21 AM, jman, 1:1