

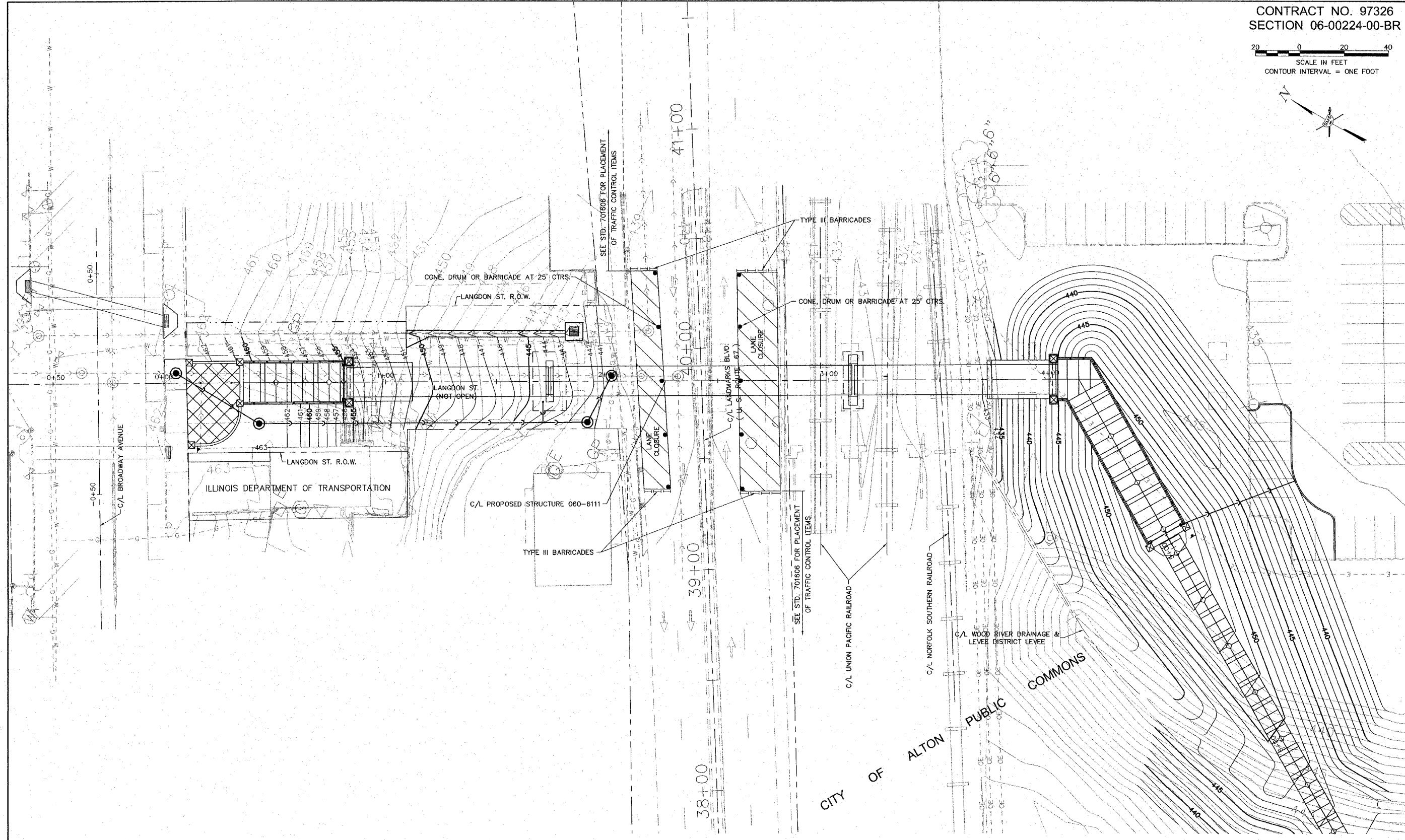
NO.	DESCRIPTION

Sheppard, Morgan & Schwaab, Inc.  
CONSULTING ENGINEERS AND LAND SURVEYORS  
210 Market Street, P.O. Box E, Alton, IL 62002, 618462-9795, E-mail: mail@smsengineers.com  
10 Canaloua Drive, Granite City, IL 62040, 618377-9700, E-mail: mail@smsengineers.com  
DESIGN FIRM # 184-000992



ALTON, ILLINOIS  
PEDESTRIAN OVERPASS AT LANGDON ST.  
TRAFFIC CONTROL PLAN

DWG. NO. C-6  
TRAFFIC CONTROL DWG  
REF. BK. 6030 PG. 1  
JOB NO. 408924.1  
DSN. BY: CLS  
DWN. BY: CAD  
CHK. BY: CLS  
DATE: MARCH 31, 2008



Standard project:ALTON\_408924\_1\dwg\Traffic Control.dwg, 5/15/2008 8:59:44 AM, jman, 1/20