

**KEYED NOTES (THIS SHEET ONLY):**

- 1 SEE "IN-SIDEWALK BASE" DETAIL DRAWING SHEET 20 OF 54.
- 2 SEE DETAIL ON DRAWING E3 SHEET 20 OF 54 FOR MOUNTING HEIGHT, CONCEAL CONDUIT TO BRIDGE DECK.
- 3 SEE DETAIL ON DRAWING E3 SHEET 20 OF 54 FOR MOUNTING HEIGHT OF WEATHERPROOF JUNCTION BOX. LEAVE 12" PIGTAIL FOR FUTURE. SURFACE GALVANIZED-RIGID STEEL CONDUIT ON BRIDGE STRUCTURE. PAINT CONDUIT TO MATCH BRIDGE STRUCTURE.
- 4 SEE ABUTMENT DETAIL ON DRAWING E3 SHEET 20 OF 54.
- 5 MOUNT FIXTURES ON EVERY FORTH FENCE POST. SEE DETAIL ON DRAWING E3 SHEET 20 OF 54 TYPICAL.

**GENERAL NOTE:**

- ALL CONDUCTORS SHALL BE #8 AWG.
- DO NOT PENETRATE EXISTING LEVEL SOIL FOR INSTALLATION FIXTURES & CONDUITS.

**ELECTRIC ENGINEERING SYMBOLS**

- WALL MOUNTED FIXTURE
- ⊙ BOLLARD
- CONDUIT EXPOSED
- - - CONDUIT CONCEALED IN FLOOR/BELOW SLAB/BELOW GRADE
- ~~~~~ LIQUIDTIGHT FLEXIBLE CONDUIT
- |||| WIRE IN CONDUIT LEFT TO RIGHT  
1 GROUND, 1 NEUTRAL, 3 HOTS
- ⊙ WEATHERPROOF JUNCTION BOX
- 1 KEYED NOTE

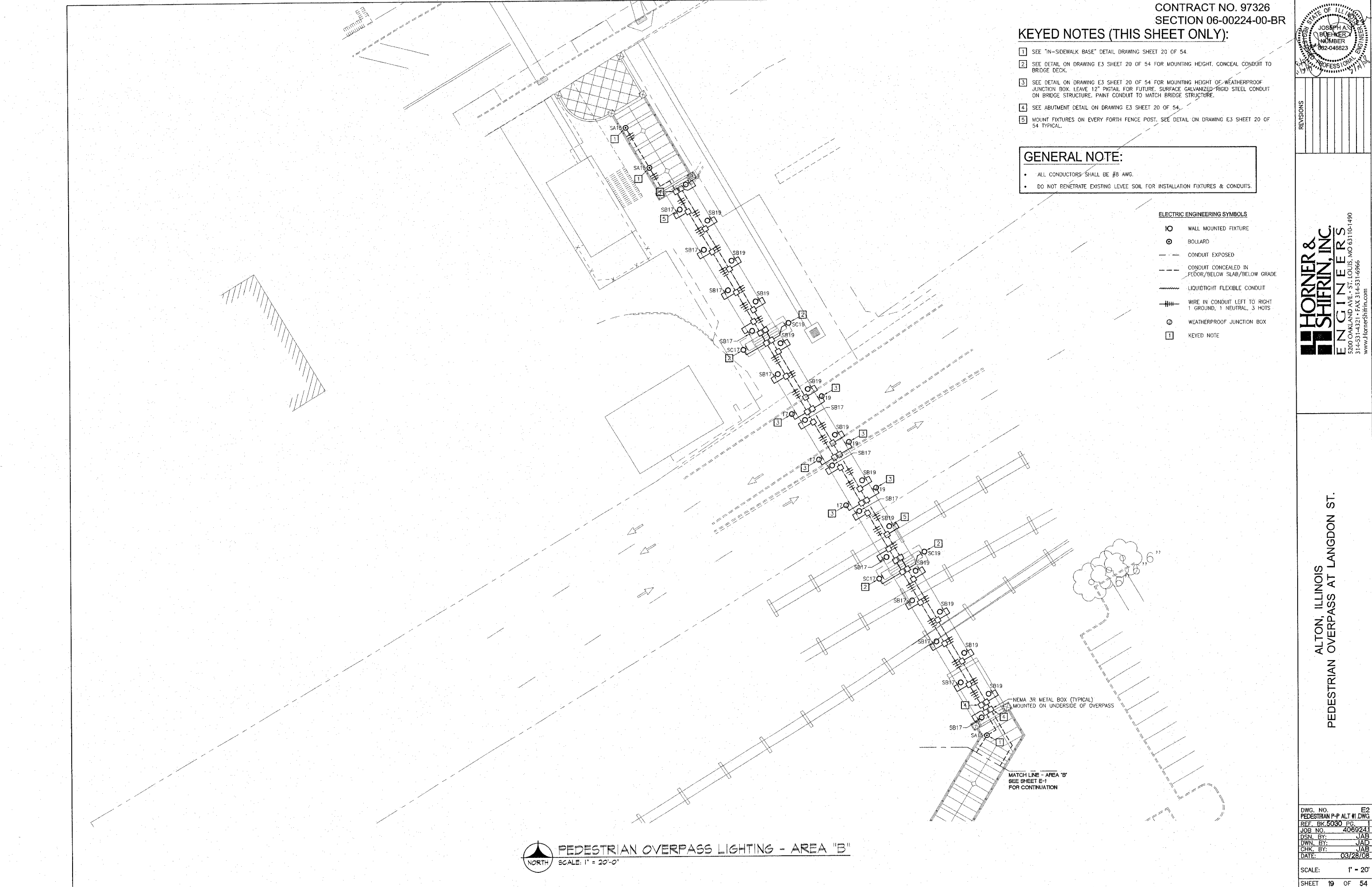
REVISIONS

**HORNER & SHIRIN, INC.**  
ENGINEERS  
5200 OAKLAND AVE. • ST. LOUIS, MO 63110-1490  
314-531-4321 • FAX 314-531-6966  
www.HornerShirin.com

ALTON, ILLINOIS  
PEDESTRIAN OVERPASS AT LANGDON ST.

DWG. NO.	E2
PEDESTRIAN P-P ALT #1 DWG	
REF. BK 5030 PG.	1
JOB NO.	4069241
DSN. BY:	JAB
DWN. BY:	JAB
CHK. BY:	JAB
DATE:	03/28/08

SCALE: 1" = 20'  
SHEET 19 OF 54



**PEDESTRIAN OVERPASS LIGHTING - AREA "B"**  
SCALE: 1" = 20'-0"