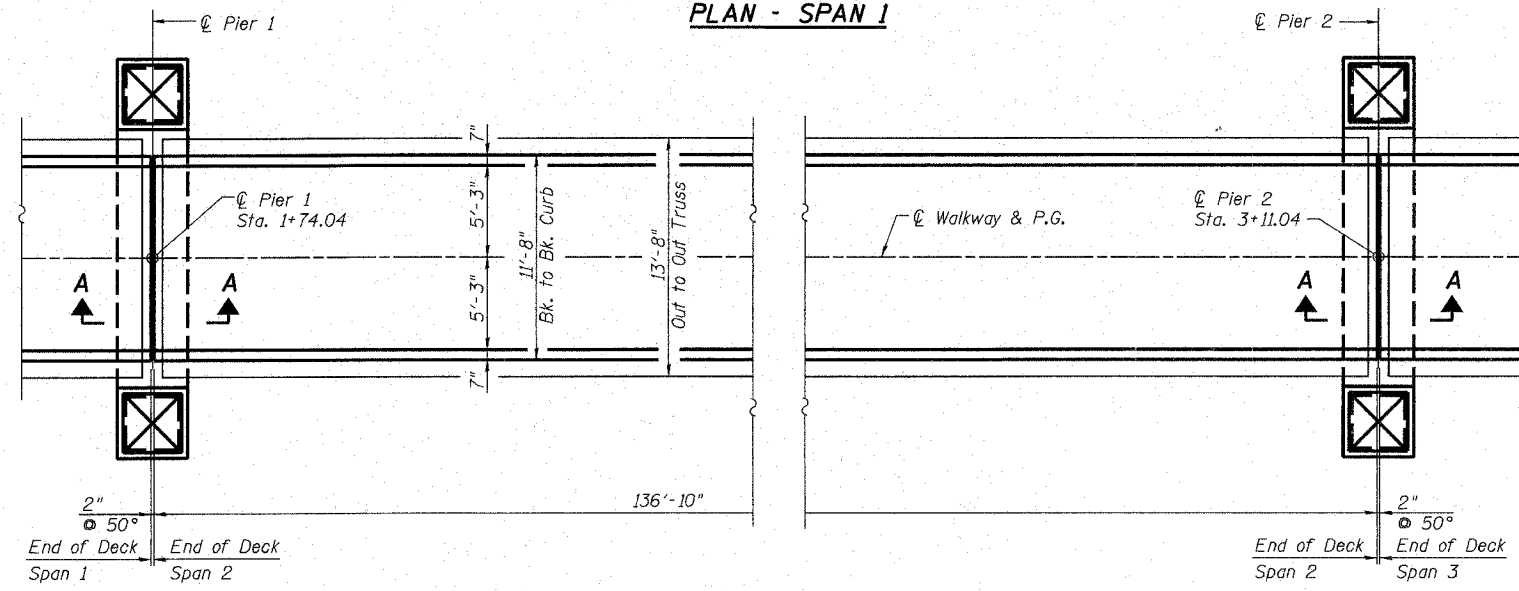
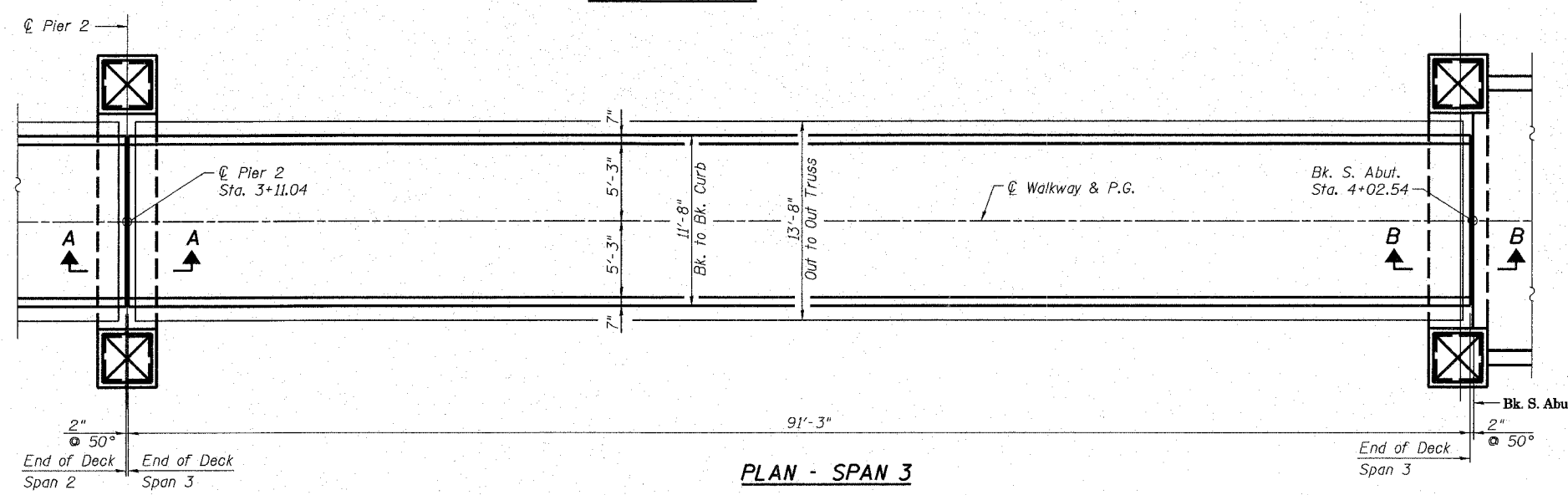


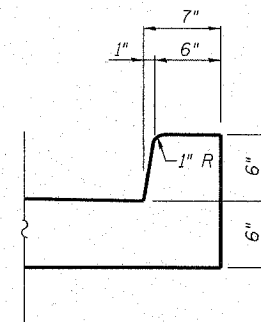
**PLAN - SPAN 1**



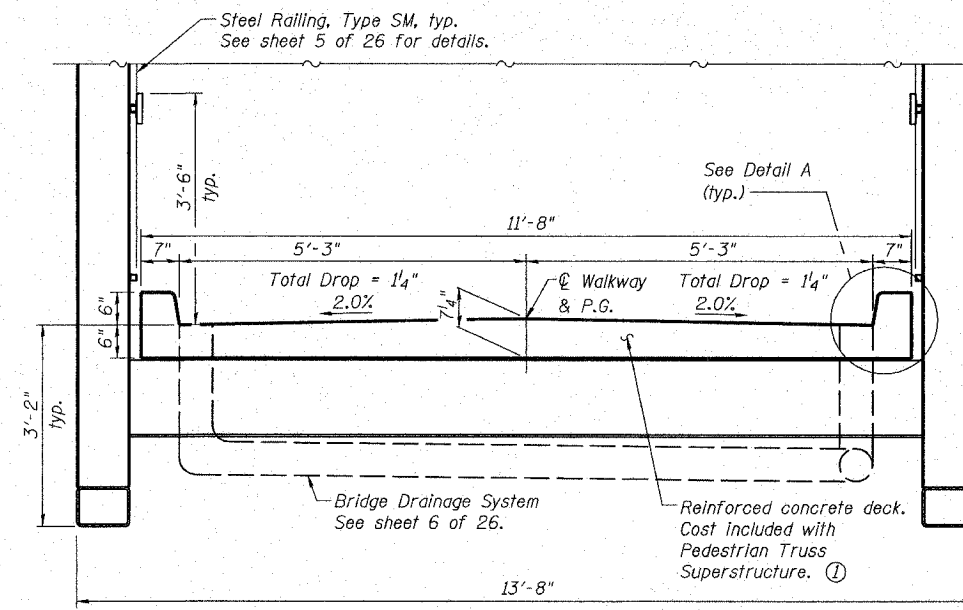
**PLAN - SPAN 2**



**PLAN - SPAN 3**



**DETAIL A**



**SECTION THRU DECK**  
(Looking South)

- Notes:
- ① Truss manufacturer shall provide the reinforced concrete deck design. Reinforcement shall be epoxy coated. Contractor shall place the concrete deck after trusses are set. Cost included with Pedestrian Truss Superstructure.
  - ② See sheet 4 of 26 for Sections A-A & B-B.

**SUPERSTRUCTURE**  
**ALTON PEDESTRIAN WALKWAY OVER**  
**UNION PACIFIC RAILROAD, NORFOLK**  
**SOUTHERN RAILROAD AND US ROUTE 67**  
**SECTION 06-00224-00-BR**  
**MADISON COUNTY**  
**STA. 2+42.54**  
**STRUCTURE NO. 060-6111**

NO.	DESCRIPTION

EngSoft Business Center 1  
 100 Lantz Court, Suite 1  
 Calverton, Illinois 62234  
 Phone: 618 342-2200  
 Fax: 618 342-2200  
 e-mail: calverton@engsoft.com  
 web-site: www.engsoft.com  
**ENGSOFT ASSOCIATES**  
 Consulting Engineers

**ALTON, ILLINOIS**  
**PEDESTRIAN OVERPASS AT LANGDON ST.**