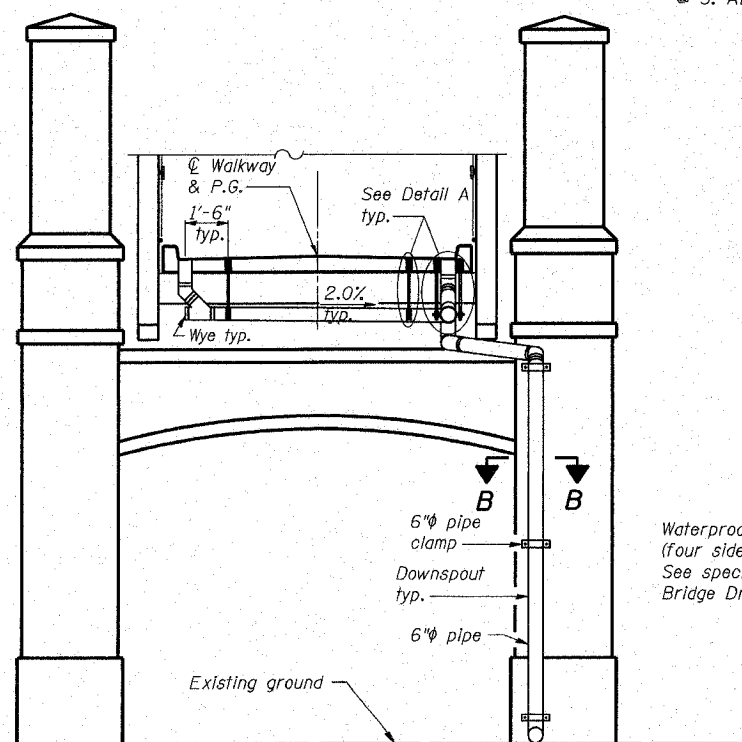


ELEVATION OF SOUTH ABUTMENT

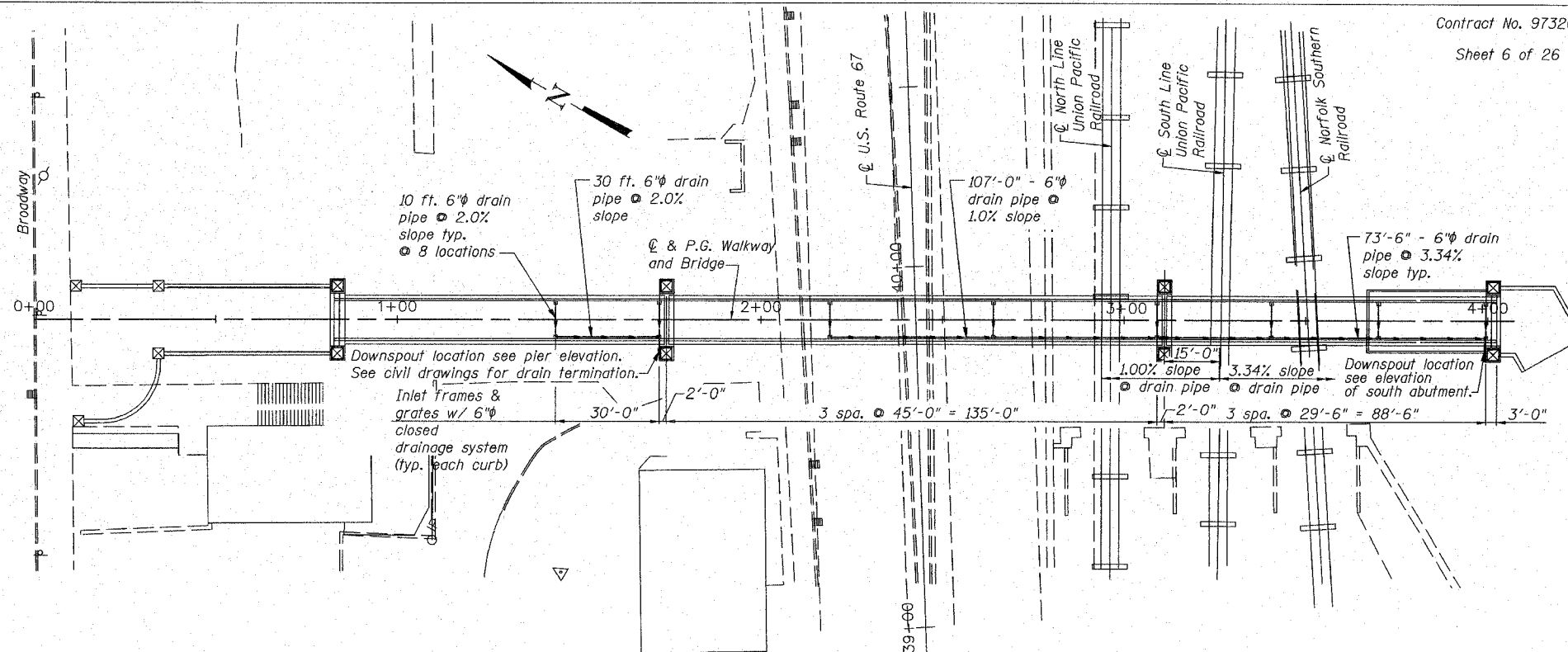
(Looking South)



ELEVATION OF PIER 1

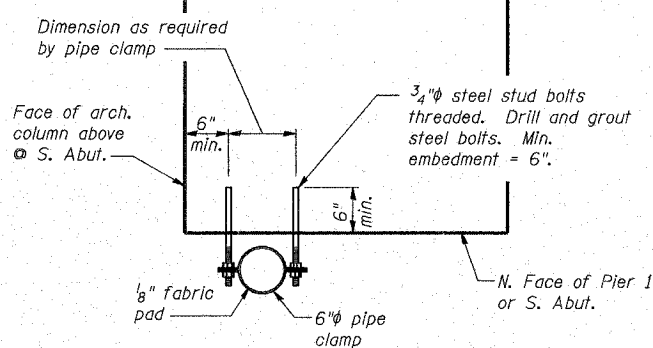
(Looking South)

See civil drawings for pipe outlet.



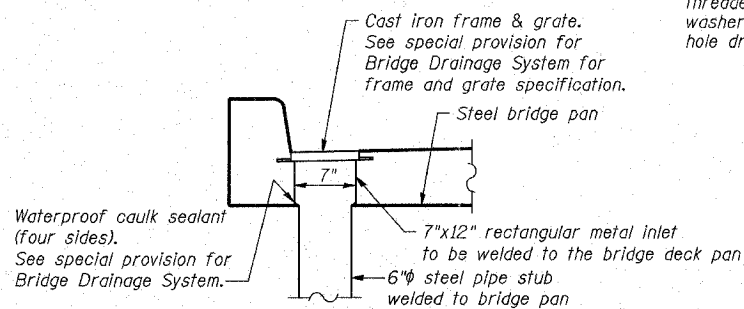
BRIDGE DRAINAGE SYSTEM LAYOUT

(Pipe drain lengths are for information only. Final lengths may vary based on final layout of deck drains. Locations to be coordinated with truss manufacturer.)

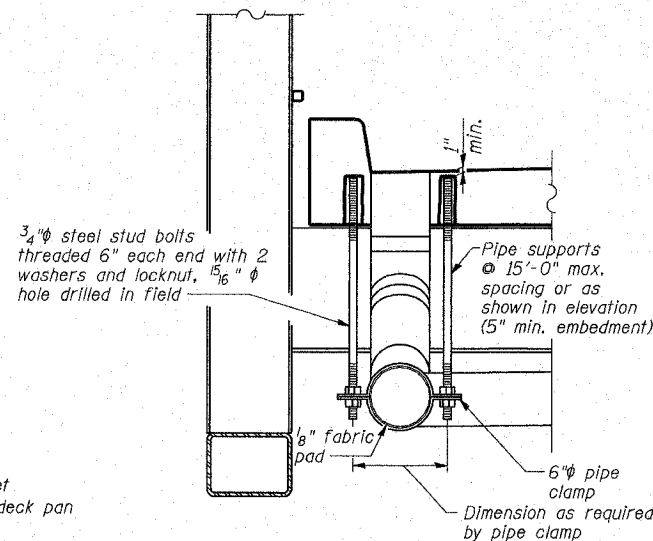


SECTION B-B

(Typical along length of pipe)



TYPICAL DRAIN GRATE AND BOX



DETAIL A

(Typ. each connection)

BILL OF MATERIAL

Item	Unit	Quantity
Bridge Drainage System	L. Sum	1

Notes:

- The exterior surfaces of the floor drain collection system shall be painted with the finish coat as defined in the Special Provisions or approved equal to match the truss. Fiberglass pipe shall conform to ASTM D 2996, with short-time rupture strength hoop tensile stress of 30,000 psi minimum.
- Contractor shall verify the locations of the floor drains, electrical conduit and equipment to coordinate any conflicts with the truss framing members prior to ordering any material. Contractor shall verify final pipe lengths prior to ordering materials.
- Prior to ordering the drain grates and boxes, the Contractor shall submit product specifications and details to the Engineer for written approval.

BRIDGE DRAINAGE SYSTEM DETAILS
ALTON PEDESTRIAN WALKWAY OVER
UNION PACIFIC RAILROAD, NORFOLK
SOUTHERN RAILROAD AND US ROUTE 67
SECTION 06-00224-00-BR
MADISON COUNTY
STA. 2+42.54
STRUCTURE NO. 060-6111

REVISIONS

Engsoft Business Center 1
 100 Linder Court, Suite 1
 Collinsville, Illinois 62234
 Phone: 618 345-2500
 Fax: 618 345-7233
 e-mail: collins@engsoft.com
 web-site: www.engsoft.com



ALTON, ILLINOIS
 PEDESTRIAN OVERPASS AT LANGDON ST.